

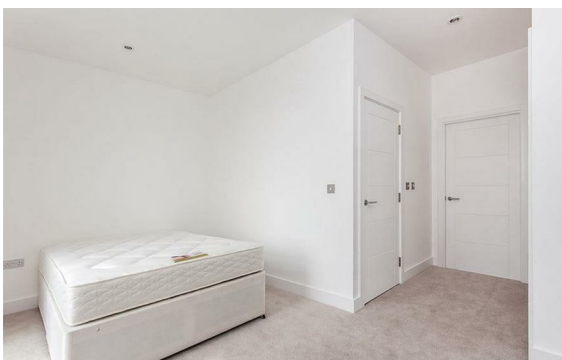
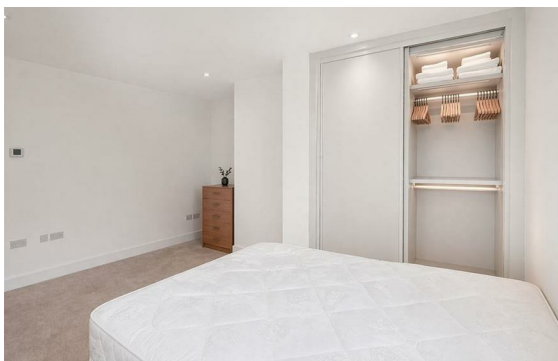


Baker Street, Marylebone, London, NW1

Rent £985 Per Month

2 Bed | 1 Bath | 1 Reception

Please call us on 020 7724 2233 or email us info@newingtonstates.com to book a viewing.



The property comprises a generous reception room with dining area, a separate fully fitted kitchen, and two bedrooms. A main bathroom is complemented by a separate WC, while wooden flooring and high ceilings enhance the overall sense of space and light.

Ideally located in Marylebone, the apartment benefits from excellent transport links via Edgware Road Station and Marylebone Station, with the open green spaces of Regent's Park and Hyde Park also within easy reach.

EPC Rating: D

Energy Efficiency Rating: D

Agents Note: Whilst every care has been taken to prepare these particulars, they are for guidance purposes only. All measurements are approximate and are for general guidance purposes only and whilst every care has been taken to ensure their accuracy, they should not be relied upon and potential buyers/tenants are advised to recheck the measurements.

NEWINGTON
— ESTATES —

60 Upper Montagu Street

London

W1H 1SN

020 7724 2233

info@newingtonestates.com

<http://www.newingtonestates.com>