



## Apartment 1, Sherwood House Haddon Road , Bakewell, DE45 1EP

£875 PCM

A well-presented two-bedroom ground floor apartment with private courtyard garden, situated within easy walking distance of Bakewell town centre and its excellent range of amenities.

- Two double bedroom ground floor apartment
- Modern kitchen diner
- Living room with access to the courtyard
- Two en-suite shower rooms
- Cellar (access via the living room)
- UNFURNISHED
- AVAILABLE NOW
- COUNCIL TAX BAND: B
- EPC RATING: C
- No rent increase for three years after move in

### Viewing

Please contact our ELR Europa Link Office on 01142689900 if you wish to arrange a viewing appointment for this property or require further information.



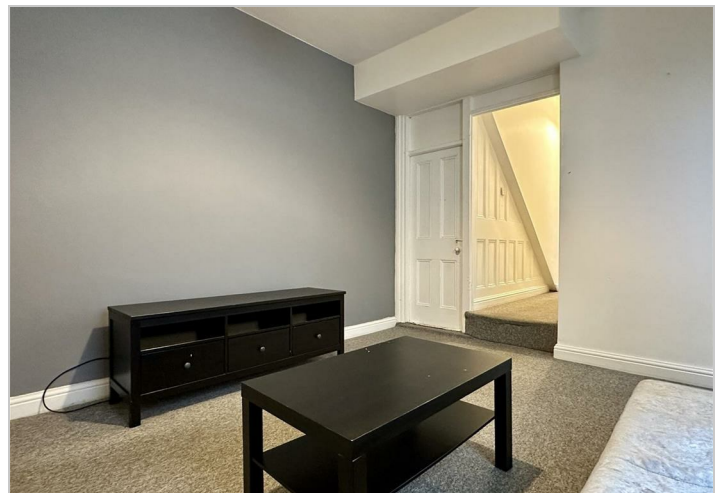
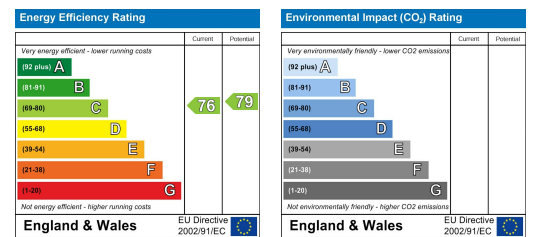
## Floor Plan



## Area Map



## Energy Efficiency Graph



These particulars, whilst believed to be accurate are set out as a general outline only for guidance and do not constitute any part of an offer or contract. Intending purchasers should not rely on them as statements of representation of fact, but must satisfy themselves by inspection or otherwise as to their accuracy. No person in this firm's employment has the authority to make or give any representation or warranty in respect of the property.