

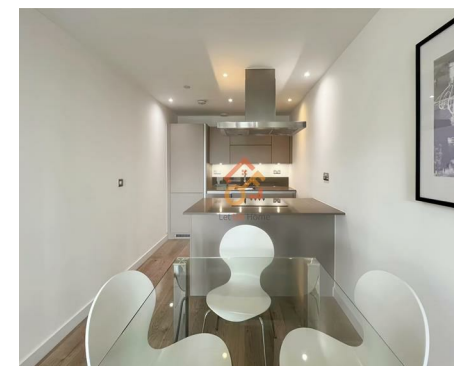
Let **UK** Home

1 Bedrooms

Flat

Located in London

£2,400 Per Month



info@letukhome.co.uk

<https://www.letukhome.co.uk/>

01795 358 886



55 Great Eastern Road London

E15 1DS



Let UK Home are pleased to offer this stunning one bedroom apartment in Stratosphere Tower, located in London E15.

This property comprises a large bright open plan kitchen and living room, one double bedroom, a modern family bathroom and ample storage.

Residents of this apartment will benefit from on-site facilities such as concierge, 36th-floor panoramic gym, sky lounge, private roof terrace, communal Wi-Fi lounge, and secure bike storage.

Close to top-rated local schools including Chandos Primary School and St Catherine of Siena Catholic Primary School. A host of leading universities are easily accessible, such as UEL, Queen Mary, LSE and KCL.

Stratford Underground and Railway Station is just a short walk away. It serves the Central, Jubilee and Elizabeth lines, DLR, London Overground and National Rail, providing swift links to the City of London and central areas. From here, you can easily reach Canary Wharf, King's Cross, Liverpool Street, Bond Street and Heathrow Airport, with excellent transport connections across London.

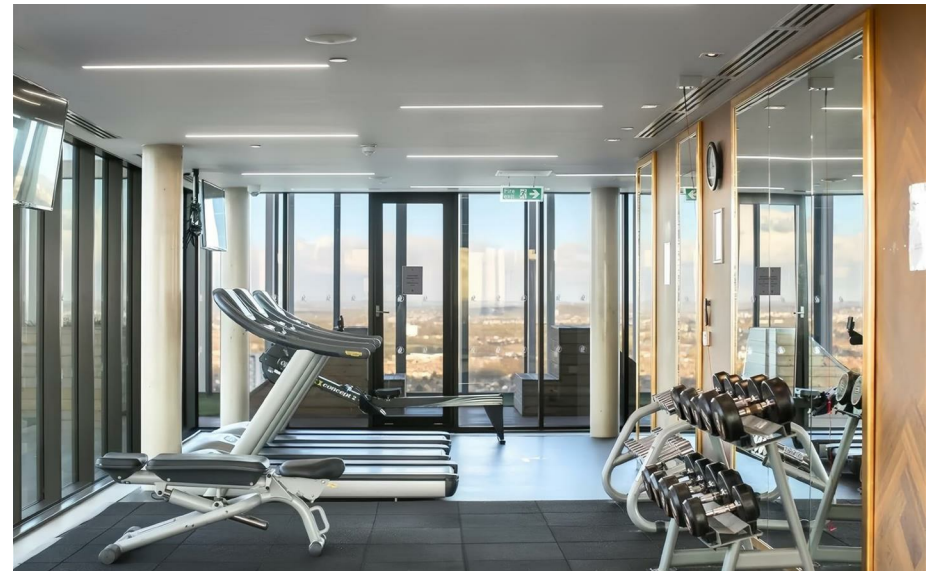
Walk to Westfield Stratford City and Stratford town centre, with abundant shops, eateries and leisure venues. Elizabeth Queen Olympic Park is on the doorstep for outdoor activities. Enjoy rooftop views, canal-side bars, weekend markets and art areas, experiencing the vibrant lifestyle of East London.

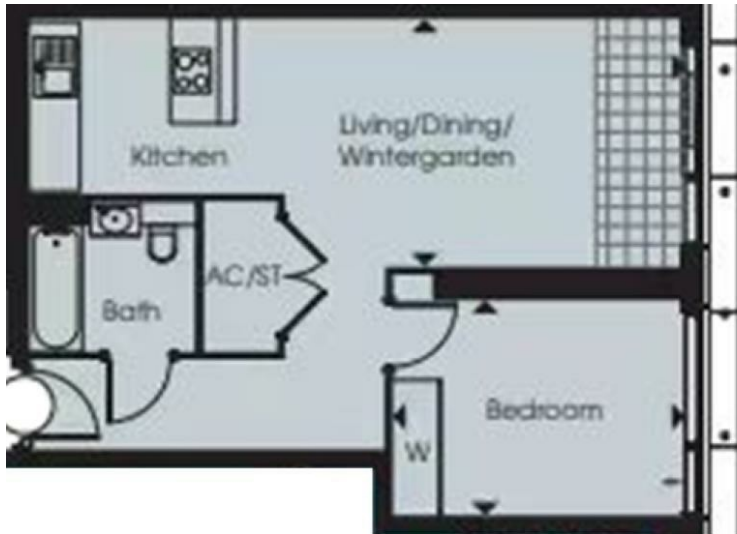
55 Great Eastern Road London

£2,400 Per Month



- 12th Floor
- 24h Security
- Rooftop Terrace
- Bike Storage
- EPC Rating: B
- Concierge Service
- Residents Lounge
- Sky Lounge
- The Gym





View towards The O₂,
The River Thames
& Canary Wharf



Kitchen/Living/Dining/Wintergarden
8.77m x 3.32m 28'9" x 10'11"

Bedroom
3.94m x 2.87m 12'11" x 9'5"

Total floor area

55 square metres



Let **UK** Home

3F 2 Eastbourne Terrace
Paddington
London
W2 6LG

01795 358 886

info@letukhome.co.uk

Council Tax Band: C

Local Authority:

Agents Note: Whilst every care has been taken to prepare these particulars, they are for guidance purposes only. All measurements are approximate and are for general guidance purposes only and whilst every care has been taken to ensure their accuracy, they should not be relied upon and potential buyers/tenants are advised to recheck the measurements.

Energy Efficiency Rating		Current	Potential
Very energy efficient - lower running costs			
(92 plus) A			
(81-91) B		85	85
(69-80) C			
(55-68) D			
(39-54) E			
(21-38) F			
(1-20) G			
Not energy efficient - higher running costs			
England & Wales	EU Directive 2002/91/EC		

<https://www.letukhome.co.uk/>