



New Bond Street, W1S

£4,983 Per calendar month

A well-proportioned two bedroom, two bathroom apartment located in a fantastic position on New Bond Street and finished to a high standard throughout.

New Bond Street runs between Oxford Circus and Green Park and the property benefits from the outstanding amenities of Bond Street, Oxford Circus and Green Park.

Features

- Two Double Bedrooms
- Two Modern Bathrooms
- Built-in Storage
- Wooden Floors Throughout
- Secondary Window Glazing
- Unfurnished



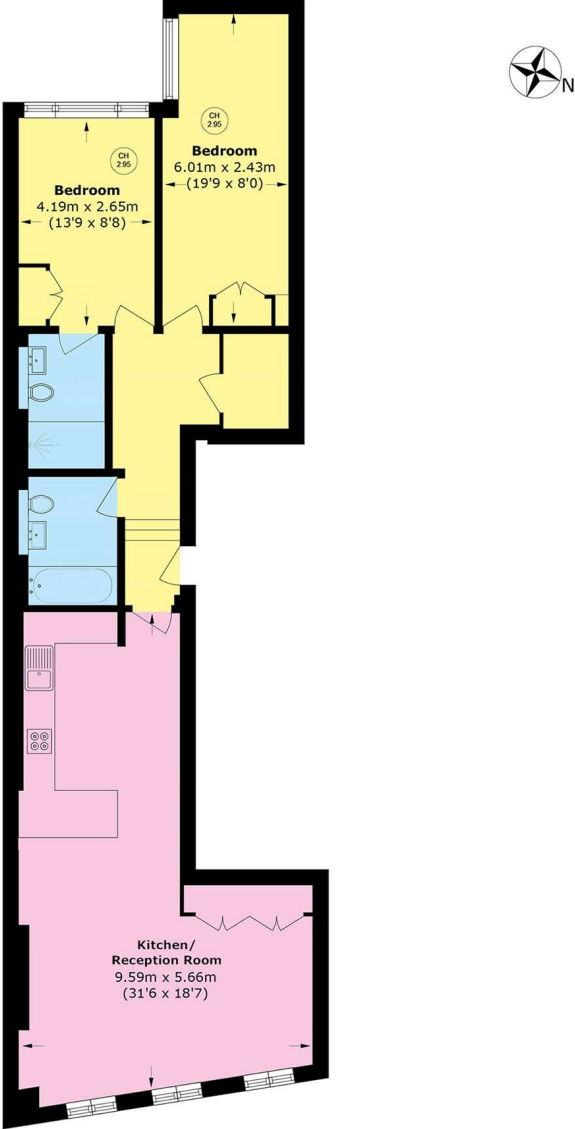
New Bond Street, W1S

The bright open plan reception room offers great entertaining space separated from the high specification kitchen by a breakfast peninsular.

Both double bedrooms are quietly situated at the rear of the building, the principal bedroom benefiting from an en-suite shower room with a further bathroom for guests.



New Bond Street,
London, W1S



First Floor

Total area (approx.): 84.7 sq. m (911.7 sq. ft)



Wetherell
102 Mount Street
London
W1K 2TH
Lettings
020 7529 5588

Energy Rating: C. We aim to make our particulars both accurate and reliable. However they are not guaranteed; nor do they form part of an offer or contract. If you require clarification on any points then please contact us, especially if you're traveling some distance to view. Please note that appliances and heating systems have not been tested and therefore no warranties can be given as to their good working order.



dexters.co.uk