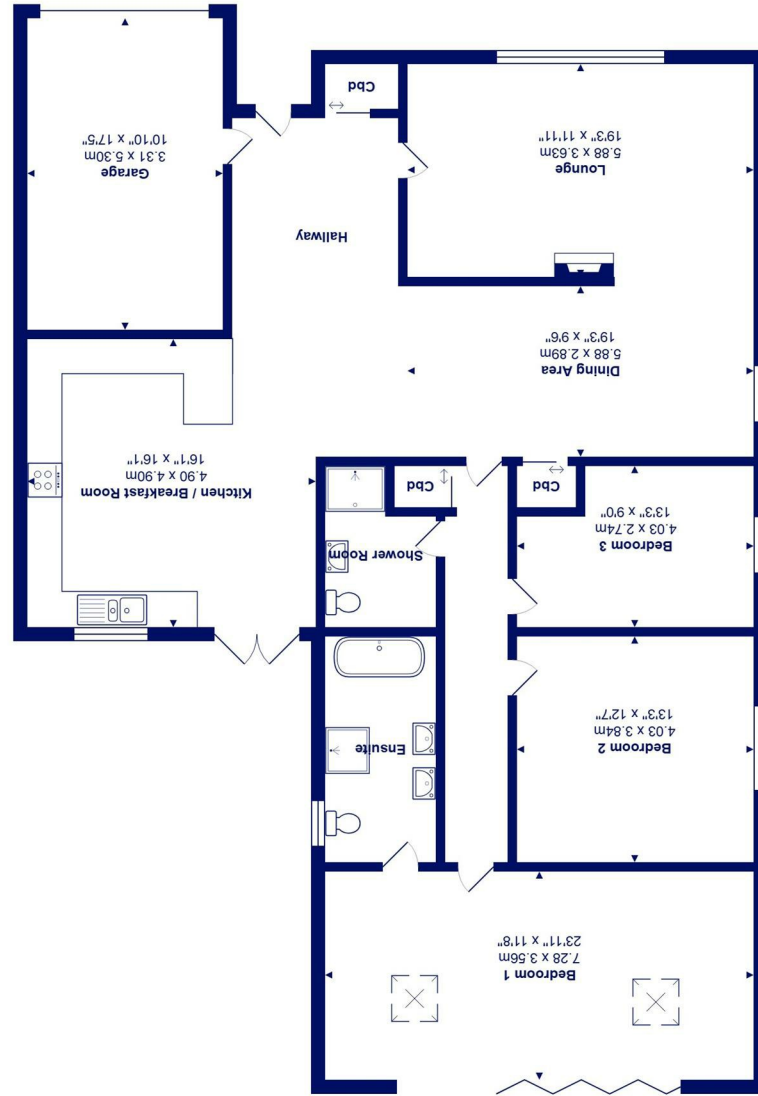


Total Area: 155.5 m² ... 1674 ft² (excluding garage)
All measurements are approximate and for display purposes only.



46 Braemar Drive, Highcliffe On Sea, BH23 5NS

£799,950

Mitchells
1963 — TODAY

A simply stunning, detached bungalow of about 1675sqft that has been comprehensively and professionally refurbished now providing luxuriously appointed accommodation with numerous, high-end features. Standing on a lovely plot with professionally landscaped gardens and plenty of off road parking, the bustling village centre, cliff top and beach are all within walking distance. Quick possession available.

- Fabulous vaulted master bedroom suite with 5m aluminium bi-fold doors to the rear terrace and garden, designer en-suite
- Two further double bedrooms with further, luxury family bathroom
- Original and restored parquet floor to inner hall and both guest bedrooms
- Impressive open plan living space with stylish new kitchen, quartz worktops, vaulted ceiling, under floor heating with a tiled floor and patio doors to sun terrace
- Large, bright and airy sitting/dining/snug with jack and jill wood burner adjacent to the kitchen
- Agate grey aluminium double glazed windows, large integral garage that will fit VW Transporter (all new cavity block work so ready for conversion if required)
- Off road parking for five cars
- Wonderful rear garden, new laid lawns front and back, purpose built garden shelter to rear of garden
- A most impressive property- strongly recommended

EPC Rating Band: C

Council Tax Band: E

Freehold

Successful buyers will be required to complete online identity checks provided by Lifetime Legal. The cost of these checks is £45 inc. VAT per purchase which is paid in advance, directly to Lifetime Legal. This check verifies your identity in line with our obligations as stipulated by our regulatory body, HMRC

