



House - End Terrace (EPC Rating: D)

LIVERPOOL ROAD, WATFORD, WD18  
0DN  
PCM

£1,750 PCM

# 2 Bedroom House - End Terrace located in

BEAUTIFUL & SPACIOUS TWO BED TWO BATHROOM FAMILY HOME PRESENTED TO A HIGH STANDARD - 286 METRES TO WATFORD GIRLS GRAMMAR SCHOOL - 0.5 MILES TO WATFORD GENERAL HOSPITAL AND A SHORT WALK INTO WATFORD TOWN CENTRE.

On the ground floor this lovely house has a spacious lounge diner with an electric fireplace. There is a modern kitchen with integrated double oven & fridge freezer and a modern shower room with w.c..

To the first floor there are two double bedrooms and a large modern bathroom set off the rear bedroom.

To finish off this wonderful home is a fully paved rear garden with side access & a large shed.

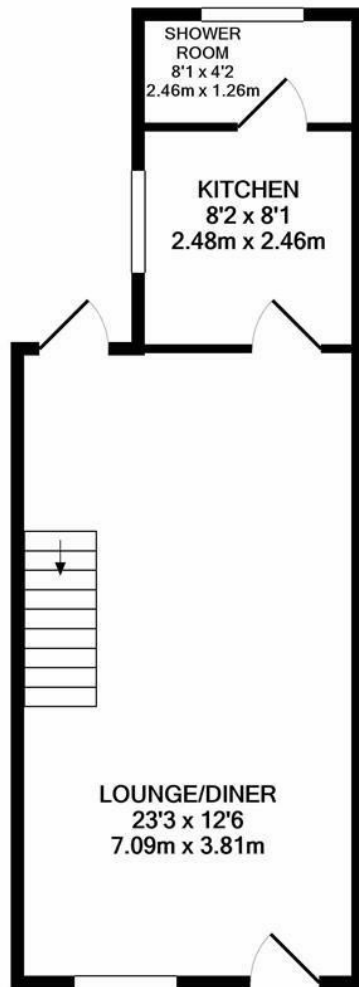
The house is double glazed, has gas central heating and two parking permits can be applied for through Watford Council.

Offered unfurnished and available March 2026.

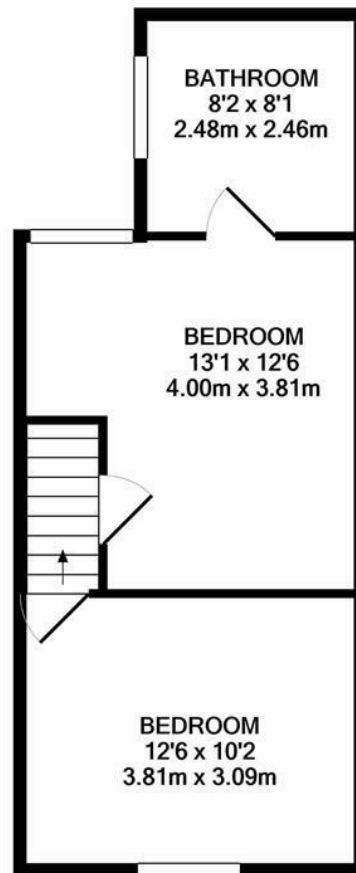




WATFORD LETTINGS | 12 MARKET STREET, WATFORD, HERTFORDSHIRE, WD18 0PD



GROUND FLOOR  
APPROX. FLOOR  
AREA 390 SQ.FT.  
(36.2 SQ.M.)



1ST FLOOR  
APPROX. FLOOR  
AREA 356 SQ.FT.  
(33.1 SQ.M.)

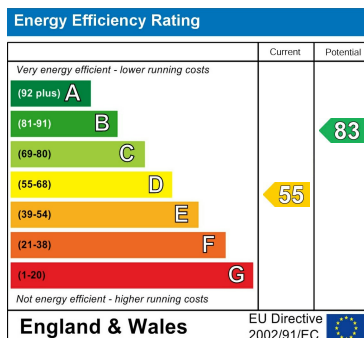
TOTAL APPROX. FLOOR AREA 746 SQ.FT. (69.3 SQ.M.)

Whilst every attempt has been made to ensure the accuracy of the floor plan contained here, measurements of doors, windows, rooms and any other items are approximate and no responsibility is taken for any error, omission, or mis-statement. This plan is for illustrative purposes only and should be used as such by any prospective purchaser. The services, systems and appliances shown have not been tested and no guarantee as to their operability or efficiency can be given  
Made with Metropix ©2021

Council Tax Band

**D**

Energy Performance Graph



Call us on

**01923 220 012**

**enquiries@warrenanthony.co.uk**

**www.warrenanthony.co.uk**

Agents Note: Whilst every care has been taken to prepare these particulars, they are for guidance purposes only. All measurements are approximate and are for general guidance purposes only and whilst every care has been taken to ensure their accuracy, they should not be relied upon and potential buyers are advised to recheck the