



Brighton Grove, SE14

£650,000

An exciting opportunity to acquire one of the earliest homes built within the highly sought-after Hatcham Park Conservation Area.

This charming two-bedroom former Railwayman's cottage, dating back approximately 160 years and originally constructed for the London to Brighton line, is tucked away in a private cul-de-sac just moments from New Cross Gate station.

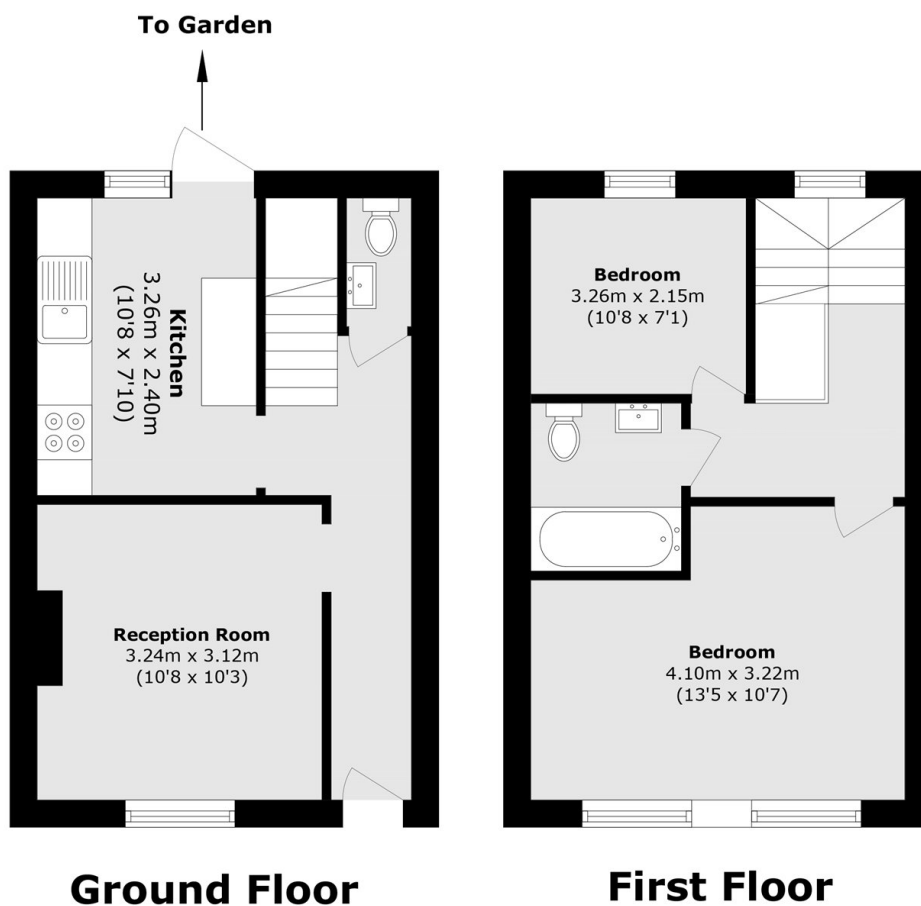
Further benefits include both front and rear gardens, providing valuable outdoor space in this desirable location.

Ideally positioned within a short walk of New Cross Gate station (Zone 2), the property enjoys excellent transport links into Central London, along with easy access to a vibrant selection of bars, cafés, and live music venues. Goldsmiths, University of London is also just a short stroll away, adding to the area's strong appeal.

Features

- Former Railwayman's Cottage
- Two Bedrooms
- Front And Rear Garden
- Hatcham Park Conservation Area
- Open Plan Layout
- Potential To Extend

Brighton Grove, London, SE14



Total area (approx.): 54.1 sq. m (582.3 sq. ft)
(Excluding Void)