



Lamberts Road, KT5

£559,950

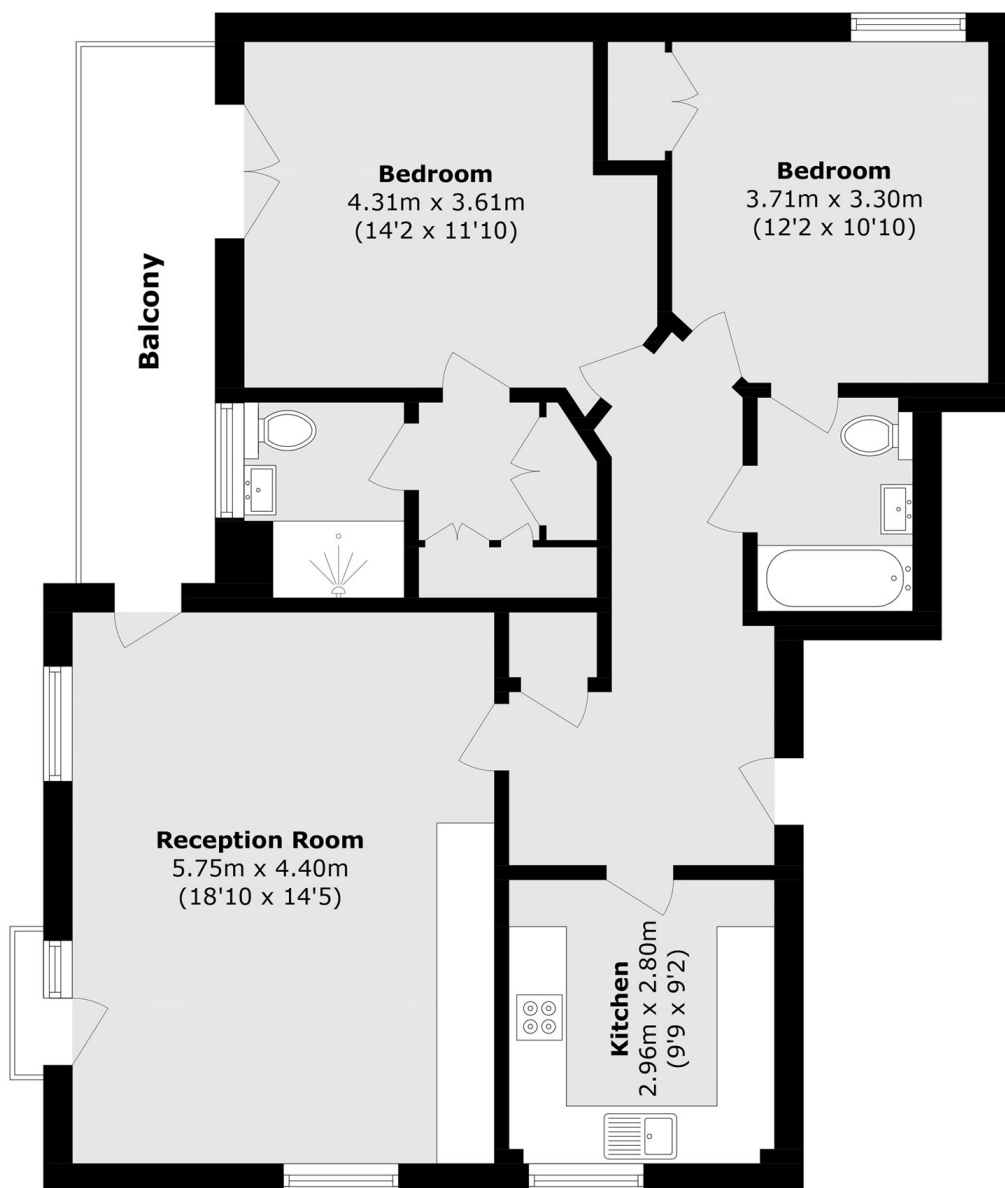
A larger than average modern apartment, offered to the market with two double bedrooms, two bathrooms, a bright and spacious reception room and modern integrated kitchen. The property also benefits from a private balcony, underground allocated parking and underfloor heating throughout.

St. Marks Heights is in the heart of Surbiton with everything you need on the doorstep, including the mainline train station with its fast and direct trains to London Waterloo in 16 minutes and a vast selection of local shops, gastro pubs and excellent restaurants.

Features

- Central Location
- Underground Allocated Parking
- Private Balcony
- Two Bathrooms
- Lift Access
- No Chain

Lamberts Road, Surbiton, KT5



Total area (approx.): 86.3 sq. m (928.8 sq. ft)
Balcony total (approx.): 7.8 sq. m (83.9 sq. ft)