



24 RAMSHAW DRIVE, CHELMSFORD CM2

£1,250 PER MONTH

2 Bedrooms | 1 Bathrooms | 1 Reception

**** AVAILABLE NOW **** A well presented TWO BEDROOM, Second Floor Apartment situated in the sought after location of Chelmer Village, being within walking distance of local amenities and is within easy access to Chelmsford City Centre. The property boasts a Modern Kitchen & Bathroom, Spacious Lounge/Diner, Two well proportioned Bedrooms whilst externally providing Allocated Parking. Early Viewing Advised to appreciate the accommodation on offer.



Hallway

Laminate flooring, electric storage heater, airing cupboard, doors to;

Lounge/Diner 21'0" x 9'6" (6.41 x 2.92)

Carpet flooring, windows to front & rear, 2x electric storage heaters, door to;

Kitchen

Vinyl flooring, wall & base units, integrated oven with 4 ring electric hob with extractor hood over, spaces for fridge freezer & washing machine, window to rear

Bedroom One 10'10" x 8'11" x 8'8" (3.32 x 2.72 x 2.65)

Carpet flooring, window to front, electric storage heater, fitted wardrobe

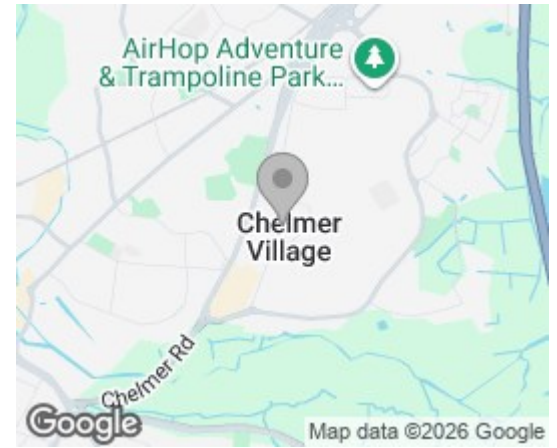
Bedroom Two 10'10" x 7'3" x 6'8" (3.32 x 2.23 x 2.04)

Carpet flooring, window to front, electric storage heater

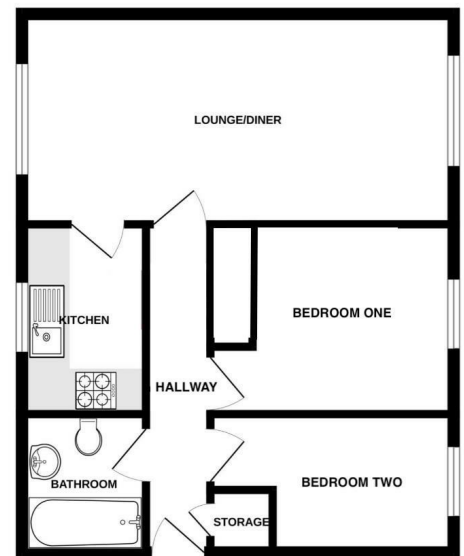
Bathroom

Vinyl flooring, tiled walls, bath with shower over, pedestal hand wash basin, WC, extractor fan, obscure window to rear

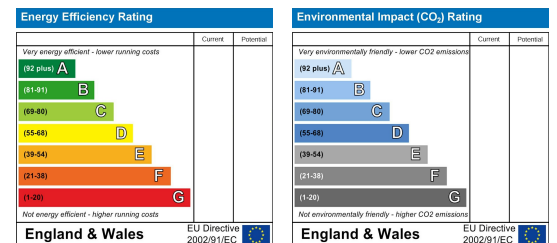
Area Map



Floor Plans



Energy Efficiency Graph



Branocs endeavour to maintain accurate depictions of properties in Virtual Tours, Floor Plans and descriptions, however, these are intended only as a guide and purchasers must satisfy themselves by personal inspection.



Phone: 01376 386555
Email: info@branocsestates.co.uk
Website: www.branocsestates.co.uk

Phoenix House 5 New Street
Braintree
Essex
CM7 1ER

