



Greenfinch Road, Smiths Wood Birmingham B36 0QX



welcome to

Greenfinch Road, Smiths Wood Birmingham

****MODERN SEMI-DETACHED PROPERTY**THREE BEDROOMS**SIDE GARAGE AND DRIVEWAY**DINING KITCHEN**LOUNGE**DOWNSTAIRS
WC**FAMILY BATHROOM**REAR GARDEN**QUIET RESIDENTIAL LOCATION****



Entrance Hall

Radiator, double-glazed window to side, ceiling light point and stairs to first floor.

Lounge

Double-glazed window to front, radiator, two ceiling light points, laminate flooring and door to ? and kitchen

Kitchen

Double-glazed window to rear, double-glazed door to garden, radiator, two ceiling light points, cupboard, draw and base units, roll top work surfaces, one and half bowl stainless sink and drainer, hob, oven, cooker hood, plumbing for washing machine, door to w.c.

Downstairs W.C.

Ceiling light point, wall mounted sink and low level w.c.

Landing

Radiator, ceiling light point, door

Bedroom One

Double-glazed window to front, radiator, ceiling light point and door to storage.

Bedroom Two

Double-glazed window to rear, radiator, ceiling light point and loft access

Bedroom Three

Double-glazed window to rear, radiator and ceiling light point.

Bathroom

Ceiling light point, extractor fan, heated towel rail, P shaped bath with shower over, low level w.c. and vanity sink.

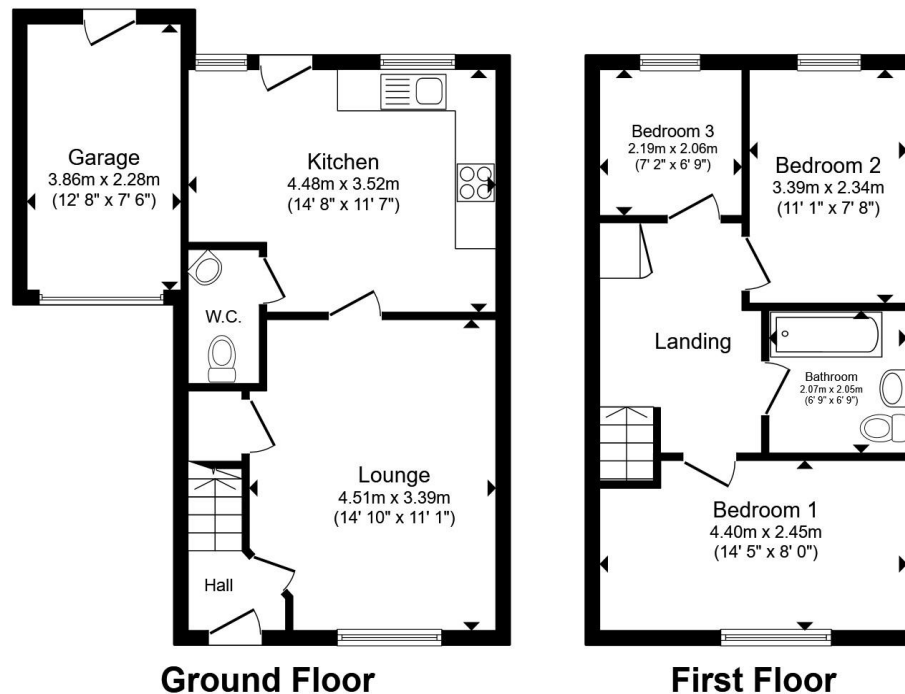
Garden

Paved area, lawned, shed, gated side access and enclosed by fencing.

Garage

16' 9" x 8' 1" (5.11m x 2.46m)

Metal up and over door, light and power and door to garden.



Total floor area 83.1 m² (895 sq.ft.) approx

This floor plan is for illustrative purposes only. It is not drawn to scale. Any measurements, floor areas (including any total floor area), openings and orientation are approximate. No details are guaranteed, they cannot be relied upon for any purpose and they do not form part of any agreement. No liability is taken for any error, omission or misstatement. A party must rely upon its own inspection(s). Powered by www.propertybox.io



view this property online shipways.co.uk/Property/CAB112201



welcome to

Greenfinch Road, Smiths Wood Birmingham

- THREE BEDROOM MODERN SEMI DETACHED
- LOUNGE
- DINING KITCHEN
- DOWNSTAIRS WC
- THREE BEDROOMS

Tenure: Freehold EPC Rating: C

Council Tax Band: B

offers over

£240,000



Please note the marker reflects the
postcode not the actual property

view this property online shipways.co.uk/Property/CAB112201



Property Ref:
CAB112201 - 0004

1. MONEY LAUNDERING REGULATIONS Intending purchasers will be asked to produce identification documentation at a later stage and we would ask for your co-operation in order that there is no delay in agreeing the sale. 2. These particulars do not constitute part or all of an offer or contract. 3. The measurements indicated are supplied for guidance only and as such must be considered incorrect. Potential buyers are advised to recheck measurements before committing to any expense. 4. We have not tested any apparatus, equipment, fixtures or services and it is in the buyers interest to check the working condition of any appliances. 5. Where an EPC, or a Home Report (Scotland only) is held for this property, it is available for inspection at the branch by appointment. If you require a printed version of a Home Report, you will need to pay a reasonable production charge reflecting printing and other costs. 6. We are not able to offer an opinion either written or verbal on the content of these reports and this must be obtained from your legal representative. 7. Whilst we take care in preparing these reports, a buyer should ensure that his/her legal representative confirms as soon as possible all matters relating to title including the extent and boundaries of the property and other important matters before exchange of contracts.

Shipways is a trading name of Sequence (UK) Limited which is registered in England and Wales under company number 4268443, Registered Office is Cumbria House, 16-20 Hockliffe Street, Leighton Buzzard, Bedfordshire, LU7 1GN. VAT Registration Number is 500 2481 05.


shipways



0121 747 4722



castlebromwich@shipways.co.uk



258 Chester Road, Castle Bromwich,
BIRMINGHAM, West Midlands, B36 0JE



shipways.co.uk