



Price
£350,000

Freehold

2x  2x  1x 

**Bermuda Road,
Grasmere Gardens
(Phase 1), Whitstable,
Kent, CT5**

Wards
Helping you move forwards



Main features

- Beautiful semi-detached house
- Comfortable living space with separate kitchen
- Turfed garden accessed via the lounge
- Two spacious double bedrooms with en-suite to the main bedroom
- EV Charge point

Accommodation

GROUND FLOOR

Entrance Hallway

Cloakroom

Kitchen: 12'7 x 7'3 (3.84m x 2.21m)

Lounge/Dining: 16'3 x 14'3 (4.96m x 4.35m)

FIRST FLOOR

Landing

Bedroom 1 : 11'8 x 10'6 (3.56m x 3.20m)

En suite Shower Room

Bedroom 2: 14'6 x 9'6 (4.42m x 2.90m)

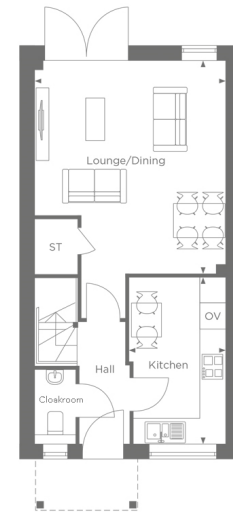
Bathroom

OUTSIDE

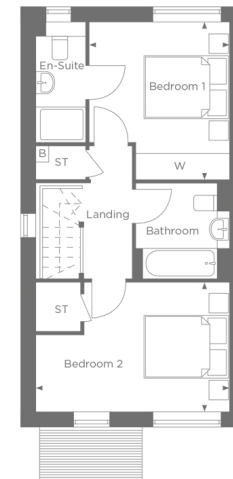
Front Garden

Driveway

Rear Garden



THE ASTER
Ground Floor
House Total Area - 79.8sq.m / 860sq.ft



THE ASTER
First Floor

Call Whitstable - 01227 772272 ■ wardsofkent.co.uk

- If buying to let, the energy rating will need to be improved to at least 'E' rating before you can let the property
- Legal advice should be taken to verify fixtures/fittings, planning, alterations and/or lease details
- Appliances & services are untested, dimensions are approximate and floor plans are not to scale



12033797/20250815/AR/NF