



Coleherne Mews, Chelsea SW10

---



## Coleherne Mews, Chelsea SW10

This house has been meticulously refurbished throughout by the current owners and offers lateral living over only three floors. Finished to a high specification, this wide, fantastic home is peacefully situated and offers an integral garage. The accommodation includes an impressive, open plan reception room and kitchen on the first floor, which is perfect for entertaining. Floor-to-ceiling French windows, which open onto Juliet balconies, flood the space with natural light. There is a working gas fireplace, elegant wood flooring, carefully considered lighting and excellent wall space; perfect for art collectors. The bespoke kitchen is beautifully appointed with sleek, integrated appliances and offers an excellent balance of work surfaces and storage space.



**Guide price:** £ 2,500,000

**Tenure:** Freehold

**Local authority:** The Royal Borough of Kensington and Chelsea

**Council tax band:** H

Upstairs, the principal bedroom is generously proportioned and features three large windows and high quality fitted wardrobes. There is a well-appointed, en suite shower room, which features a wonderful sky light. There is a further, double bedroom on the top floor of the house, which is served by a shower room. Both of the top floor bedrooms benefit from air conditioning.

The ground floor of the house offers an additional two bedrooms, which are served by a guest shower room, which is served by underfloor heating. These bedrooms offer flexible accommodation and could be used as a home office or gym if required. The accommodation is completed by a utility room, which includes excellent storage, and an integral garage. In all, we truly believe that this is the perfect "lock up and leave" home in a highly regarded, residential address.





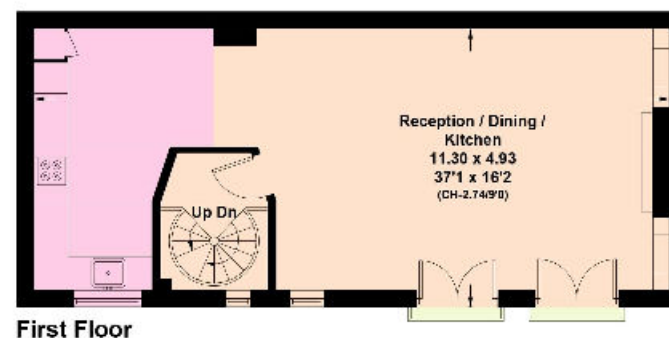
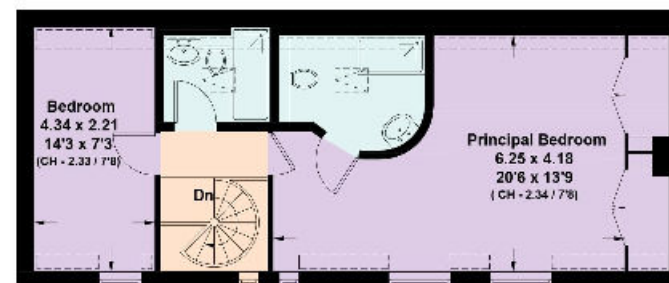
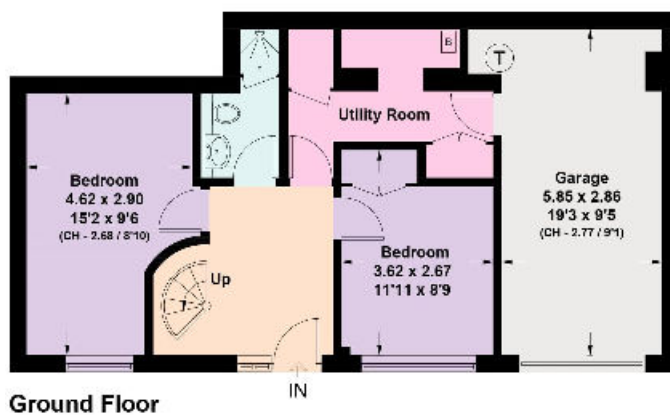


## Coleherne Mews, SW10

Approximate Gross Internal Area = 164.6 sq m / 1772 sq ft  
(Including Garage)  
Including Limited Use Area (6.1 sq m / 66 sq ft)



= Reduce head height below 1.5m



Knight Frank  
Chelsea  
352A Kings Road  
London  
SW3 5UU  
[knightfrank.co.uk](https://www.knightfrank.co.uk)

We would be delighted to tell you more  
Claire Mengham  
020 3978 2462  
[claire.mengham@knightfrank.com](mailto:claire.mengham@knightfrank.com)



Fixtures and fittings: A list of the fitted carpets, curtains, light fittings and other items fixed to the property which are included in the sale (or may be available by separate negotiation) will be provided by the Seller's Solicitors.

Important Notice: 1. Particulars: These particulars are not an offer or contract, nor part of one. You should not rely on statements by Knight Frank LLP in the particulars or by word of mouth or in writing ("information") as being factually accurate about the property, its condition or its value. Neither Knight Frank LLP nor any joint agent has any authority to make any representations about the property, and accordingly any information given is entirely without responsibility on the part of the agents, seller(s) or lessor(s). 2. Photos, Videos etc: The photographs, property videos and virtual viewings etc. show only certain parts of the property as they appeared at the time they were taken. Areas, measurements and distances given are approximate only. 3. Regulations etc: Any reference to alterations to, or use of, any part of the property does not mean that any necessary planning, building regulations or other consent has been obtained. A buyer or lessee must find out by inspection or in other ways that these matters have been properly dealt with and that all information is correct. 4. VAT: The VAT position relating to the property may change without notice. 5. To find out how we process Personal Data, please refer to our Group Privacy Statement and other notices at <https://www.knightfrank.com/legals/privacy-statement>.

Particulars dated May 2023. Photographs and videos dated May 2023.

All information is correct at the time of going to print. Knight Frank is the trading name of Knight Frank LLP. Knight Frank LLP is a limited liability partnership registered in England and Wales with registered number OC305934. Our registered office is at 55 Baker Street, London W1U 8AN. We use the term 'partner' to refer to a member of Knight Frank LLP, or an employee or consultant. A list of members names of Knight Frank LLP may be inspected at our registered office. If you do not want us to contact you further about our services then please contact us by either calling 020 3544 0692, email to [marketing.help@knightfrank.com](mailto:marketing.help@knightfrank.com) or post to our UK Residential Marketing Manager at our registered office (above) providing your name and address.