

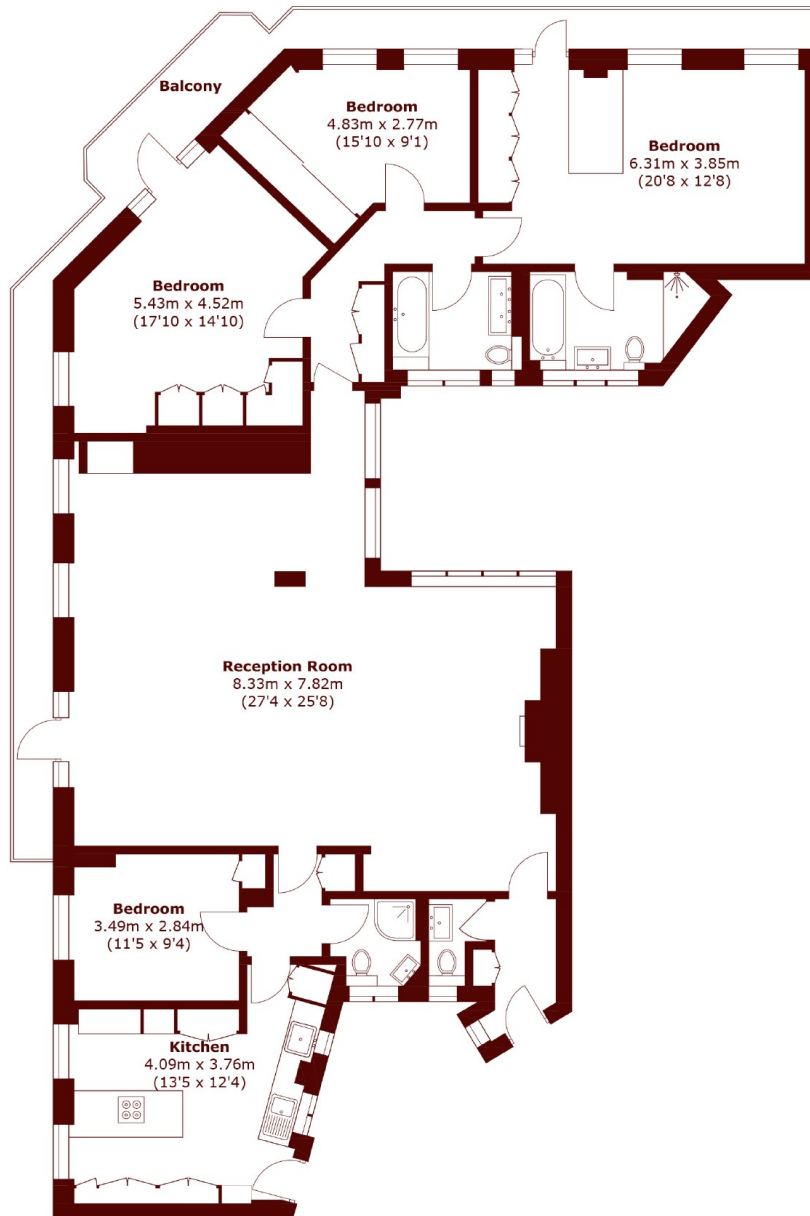


Berkeley Court, NW1

£2,700 per week (£11,912 pcm)

4 3 1 E

- Exceptional Finish
- 24-hour Porter
- Four Double Bedrooms
- Balcony
- Large Communal Roof Garden
- Ample Storage



Eighth Floor

Total area (approx.): 187.1 sq. m (2,013.9 sq. ft)

Balcony area: 23.3 sq. m (250.8 sq. ft)

Marsh & Parsons Marylebone & Mayfair

94 Baker Street, London,
W1U 6FZ
020 7935 1775

We aim to make our particulars both accurate and reliable. However, they are not guaranteed; nor do they form part of an offer or contract. If you require clarification on any points then please contact us, especially if you're traveling some distance to view. Please note that appliances and heating systems have not been tested and therefore no warranties can be given as to their good working order.