



St Georges Square | Halesworth Road | Reydon | IP18 6SD

Guide Price £108,000

**NICHOLAS**  
ESTATES

## Key features

- Shares Available between 30% - 75%  
Dependant on Affordability
- Popular Village Location
- Two Bedrooms
- Lounge/Diner
- Air Source Heating
- Two Off Road Parking Spaces

## Description

Nicholas Estates are pleased to be marketing on behalf of Orwell Housing Association, this two bedroom semi-detached house situated in the popular village of Reydon. Available as part of the shared ownership scheme, the asking price represents a 30% share

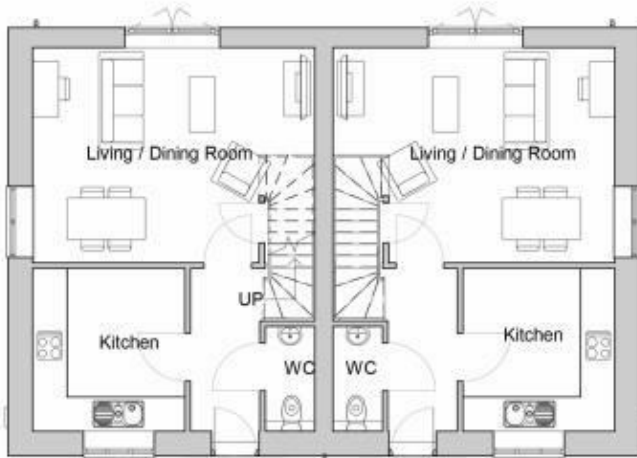
## Directions



Nicholas Estates are pleased to be marketing on behalf of Orwell Housing Association, this two bedroom semi-detached house situated in the popular village of Reydon. Available as part of the shared ownership scheme, the asking price represents a 30% sh

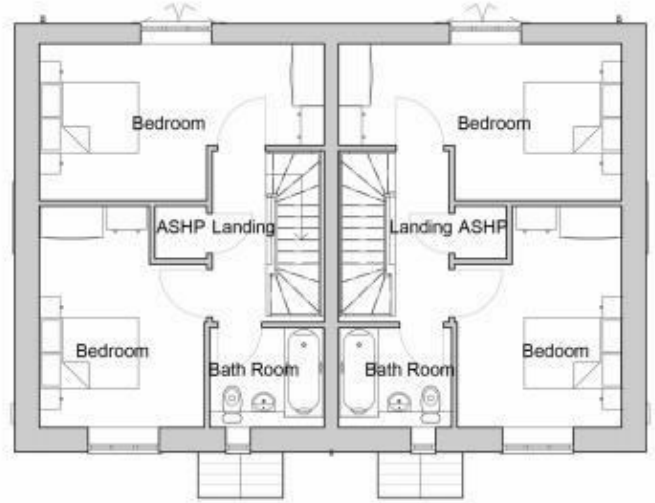


Floor plans



**Ground floor**

1 : 100



**First floor**

1 : 100

Energy Efficiency Rating		
	Current	Potential
<i>Very energy efficient - lower running costs</i>		
(92 plus) <b>A</b>		
(81-91) <b>B</b>		
(69-80) <b>C</b>		
(55-68) <b>D</b>		
(39-54) <b>E</b>		
(21-38) <b>F</b>		
(1-20) <b>G</b>		
<i>Not energy efficient - higher running costs</i>		
<b>England &amp; Wales</b>	EU Directive 2002/91/EC	

Council Tax Band **New Build**      EPC Rating

**NICHOLAS**  
ESTATES

173 Hamilton Road  
Felixstowe  
Suffolk  
IP11 7DR

01394 282828

felixstowe@yourhome.co.uk

yourhome.co.uk