



## 55 Allingham Court Summers Road , Godalming, GU7 3AW

A well presented ground floor double bedroom retirement flat in the popular Allingham Court close to the local amenities in Farncombe. The flat has been updated including the kitchen and shower room and benefits from double doors leading out from the sitting room to the gardens. No onward chain.

**Price Guide £175,000**

# 55 Allingham Court Summers Road , Godalming, GU7 3AW



- Ground floor retirement flat
- Entrance hall
- Sitting/dining room with double doors to the communal gardens
- Fitted kitchen
- Double bedroom with wardrobe cupboard
- Shower room
- Communal gardens, House manager, residents parking
- Close to local shops and mainline station
- No onward chain



[Directions](#)

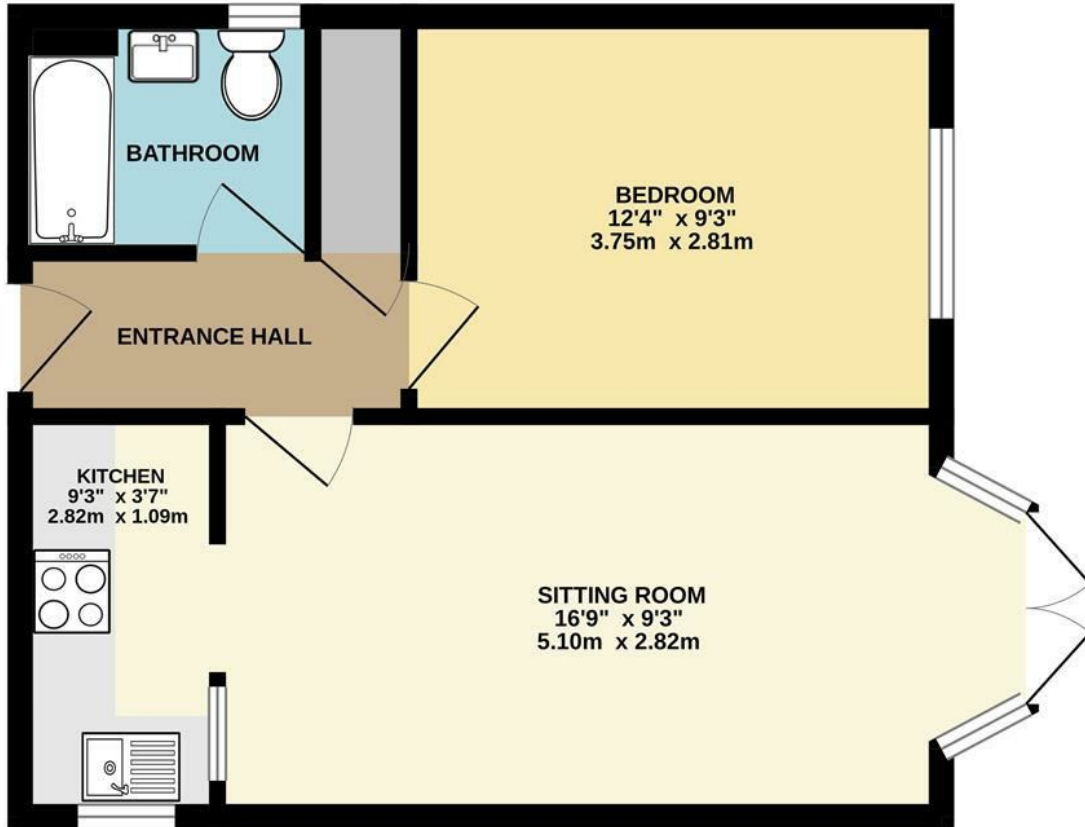
Sat Nav: GU7 3AW





# Floor Plan

GROUND FLOOR  
364 sq.ft. (33.8 sq.m.) approx.



TOTAL FLOOR AREA : 364 sq.ft. (33.8 sq.m.) approx.

Whilst every attempt has been made to ensure the accuracy of the floorplan contained here, measurements of doors, windows, rooms and any other items are approximate and no responsibility is taken for any error, omission or mis-statement. This plan is for illustrative purposes only and should be used as such by any prospective purchaser. The services, systems and appliances shown have not been tested and no guarantee as to their operability or efficiency can be given.  
Made with Metropix ©2026



These particulars, whilst believed to be accurate are set out as a general outline only for guidance and do not constitute any part of an offer or contract. Intending purchasers should not rely on them as statements of representation of fact, but must satisfy themselves by inspection or otherwise as to their accuracy. No person in this firm's employment has the authority to make or give any representation or warranty in respect of the property.

Energy Efficiency Rating		Current	Potential	Environmental Impact (CO <sub>2</sub> ) Rating		Current	Potential
Very energy efficient - lower running costs				Very environmentally friendly - lower CO <sub>2</sub> emissions			
(92 plus) <b>A</b>				(81-91) <b>A</b>			
(81-91) <b>B</b>				(69-80) <b>B</b>			
(69-80) <b>C</b>				(55-68) <b>C</b>			
(55-68) <b>D</b>				(39-54) <b>D</b>			
(39-54) <b>E</b>				(21-38) <b>E</b>			
(21-38) <b>F</b>				(11-20) <b>F</b>			
(11-20) <b>G</b>				Not environmentally friendly - higher CO <sub>2</sub> emissions			
Not energy efficient - higher running costs				Not environmentally friendly - higher CO <sub>2</sub> emissions			
England & Wales		EU Directive 2002/91/EC		England & Wales		EU Directive 2002/91/EC	
		61	72				