



**Connells**

Tunbridge Way  
Ashford



### Property Description

This modern 3-bedroom home is a perfect blend of style, comfort and functionality. This home is highly sought after due to its sleek design, modern amenities and spacious layout.

As you step into this contemporary home you will be greeted by an open plan living area that is perfect for entertaining guests or relaxing with your family. The living area features large double French doors that let in plenty of natural light. The room is spacious and comfortable, with plenty of space for a sofa and armchairs. The kitchen is a modern space that is perfect for cooking up your favourite meals. It features all the modern appliances that you need, as well as plenty of storage space. Just opposite the kitchen you will find a downstairs W.C for convenience.

The front of the property offers a safe space not looking out onto a road providing a level of safety and security. Parking to the property is conveniently located just metres away from the property.

Upstairs, the principal bedroom is spacious and comfortable that has the added benefit of a walk-in wardrobe with plenty of storage space. The other 2 bedrooms are also spacious and comfortable rooms with room for storage. The bathroom is a modern space which is perfect relaxing and unwinding.

The rear garden is split into two sections; there is a raised turfed area perfect for children to play and there is also the added benefit of a patio area which is perfect for hosting friends and families and making the garden very maintainable.

This modern 3-bedroom home is a perfect blend of style, comfort and functionality. This home is highly sought after due to its sleek design, modern amenities and spacious layout.

As you step into this contemporary home you will be greeted by an open plan living area that is perfect for entertaining guests or relaxing with your family. The living area features large double French doors that let in plenty of natural light. The room is spacious and comfortable, with plenty of space for a sofa and armchairs. The kitchen is a modern space

that is perfect for cooking up your favourite meals. It features all the modern appliances that you need, as well as plenty of storage space. Just opposite the kitchen you will find a downstairs W.C for convenience.

The front of the property offers a safe space not looking out onto a road providing a level of safety and security. Parking to the property is conveniently located just metres away from the property.

Upstairs, the principal bedroom is spacious and comfortable that has the added benefit of a walk-in wardrobe with plenty of storage space. The other 2 bedrooms are also spacious and comfortable rooms with room for storage. The bathroom is a modern space which is perfect relaxing and unwinding.

The rear garden is split into two sections; there is a raised turfed area perfect for children to play and there is also the added benefit of a patio area which is perfect for hosting friends and families and making the garden very maintainable.

This modern 3-bedroom home is a perfect blend of style, comfort and functionality. This home is highly sought after due to its sleek design, modern amenities and spacious layout.

As you step into this contemporary home you will be greeted by an open plan living area that is perfect for entertaining guests or relaxing with your family. The living area features large double French doors that let in plenty of natural light. The room is spacious and comfortable, with plenty of space for a sofa and armchairs. The kitchen is a modern space that is perfect for cooking up your favourite meals. It features all the modern appliances that you need, as well as plenty of storage space. Just opposite the kitchen you will find a downstairs W.C for convenience.

The front of the property offers a safe space not looking out onto a road providing a level of safety and security. Parking to the property is conveniently located just metres away from the property.

Upstairs, the principal bedroom is spacious and comfortable that has the added benefit of a walk-in wardrobe with plenty of storage space. The other 2 bedrooms are also spacious and comfortable rooms with room for storage. The bathroom is a modern space which is perfect relaxing and unwinding.

The rear garden is split into two sections; there is a raised turfed area perfect for children to play and there is also the added benefit of a patio area which is perfect for hosting friends and families and making the garden very maintainable.

This modern 3-bedroom home is a perfect blend of style, comfort and functionality. This home is highly sought after due to its sleek design, modern amenities and spacious layout.

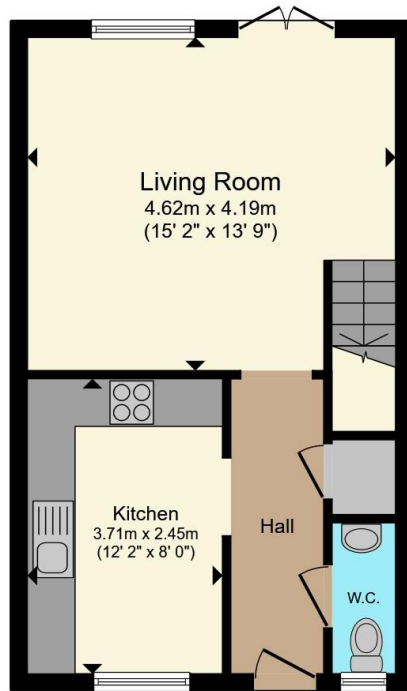
As you step into this contemporary home you will be greeted by an open plan living area that is perfect for entertaining guests or relaxing with your family. The living area features large double French doors that let in plenty of natural light. The room is spacious and comfortable, with plenty of space for a sofa and armchairs. The kitchen is a modern space that is perfect for cooking up your favourite meals. It features all the modern appliances that you need, as well as plenty of storage space. Just opposite the kitchen you will find a downstairs W.C for convenience.

The front of the property offers a safe space not looking out onto a road providing a level of safety and security. Parking to the property is conveniently located just metres away from the property.

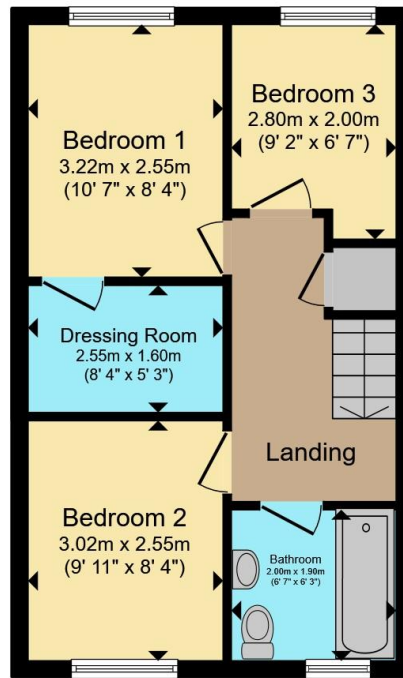
Upstairs, the principal bedroom is spacious and comfortable that has the added benefit of a walk-in wardrobe with plenty of storage space. The other 2 bedrooms are also spacious and comfortable rooms with room for storage. The bathroom is a modern space which is perfect relaxing and unwinding.

The rear garden is split into two sections; there is a raised turfed area perfect for children to play and there is also the added benefit of a patio area which is perfect for hosting friends and families and making the garden very maintainable.





**Ground Floor**



**First Floor**

Total floor area 73.9 m<sup>2</sup> (796 sq.ft.) approx

This floor plan is for illustrative purposes only. It is not drawn to scale. Any measurements, floor areas (including any total floor area), openings and orientation are approximate. No details are guaranteed, they cannot be relied upon for any purpose and they do not form part of any agreement. No liability is taken for any error, omission or misstatement. A party must rely upon its own inspection(s). Powered by [www.propertybox.io](http://www.propertybox.io)



To view this property please contact Connells on

**T 01233 622206**  
**E [ashford@connells.co.uk](mailto:ashford@connells.co.uk)**

77 High Street  
ASHFORD TN24 8SF

EPC Rating: C Council Tax  
Band: C

**view this property online [connells.co.uk/Property/ASH408305](http://connells.co.uk/Property/ASH408305)**

Tenure: Freehold



1. MONEY LAUNDERING REGULATIONS Intending purchasers will be asked to produce identification documentation at a later stage and we would ask for your co-operation in order that there will be no delay in agreeing the sale. 2. These particulars do not constitute part or all of an offer or contract. 3. The measurements indicated are supplied for guidance only and as such must be considered incorrect. Potential buyers are advised to recheck measurements before committing to any expense. 4. We have not tested any apparatus, equipment, fixtures, fittings or services and it is in the buyers interest to check the working condition of any appliances.

Connells Residential is registered in England and Wales under company number 1489613, Registered Office is Cumbria House, 16-20 Hockliffe Street, Leighton Buzzard, Bedfordshire, LU7 1GN. VAT Registration Number is 500 2481 05.

**See all our properties at [www.connells.co.uk](http://www.connells.co.uk) | [www.rightmove.co.uk](http://www.rightmove.co.uk) | [www.zoopla.co.uk](http://www.zoopla.co.uk)**

Property Ref: ASH408305 - 0019