



Welbeck Street, Warsop, NG20 0NA

 2

 1

 2

 EPC

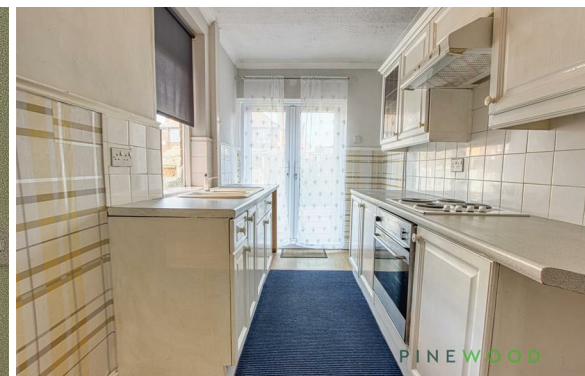
C

£695 PCM

PINEWOOD



**Welbeck Street
Warsop
Nottinghamshire
NG20 0NA**



£695 PCM

**2 bedrooms
1 bathroom
2 receptions**

- Two Double Bedrooms
- Terraced House
- Spacious Lounge
- Dining Room
- uPVC
- Gas Boiler Central Heating
- Neutral Decor
- Enclosed Rear Garden
- Council Tax Band: A
- Security Deposit £917





Pinewood Properties are pleased to offer this two double bed terraced property that is decorated throughout. Comprising a lounge, dining room and fitted kitchen. To the first floor are two double bedrooms and large family bathroom. To the rear is an enclosed garden and to the front is on street parking. Benefiting from gas central heating and part double glazed. Pets neg at £25pcm per pet.

****If you would like to view this property, or apply for it, please click the 'Request Details' button on Rightmove and enter your information****

Lounge

11' x 11'11 (3.36m x 3.63m)

This cosy lounge offers a welcoming space with a large window that lets in plenty of natural light. It features a charming decorative fireplace set against a wallpapered wall with delicate floral patterns. The carpeted floor adds warmth, making it a comfortable area to relax.

Dining Room

15'1 x 11'11 (4.59m x 3.63m)

The dining room is a bright and spacious area that connects seamlessly to the kitchen through a stylish archway. It benefits from a large window and neutral décor, with a carpeted floor that complements the room's inviting feel. This space is ideal for family meals and entertaining guests.

Kitchen

11'9 x 6'8 (3.58m x 2.02m)

Through an arched opening from the dining room, the kitchen is compact yet functional. It features white cabinetry paired with a neutral work surface, an integrated oven and hob, and a sink positioned beneath a window. French doors at the far end provide access to the garden, allowing for plenty of natural light to fill the space.

Master Bedroom

12'6 x 11'10 (3.82m x 3.60m)

The master bedroom is a generous double room with a large window overlooking the front of the property. Neutral tones enhance the room's light and spacious feel, complemented by carpeted flooring. The room is versatile, suitable for various furnishing styles to create a peaceful retreat.

Bedroom Two

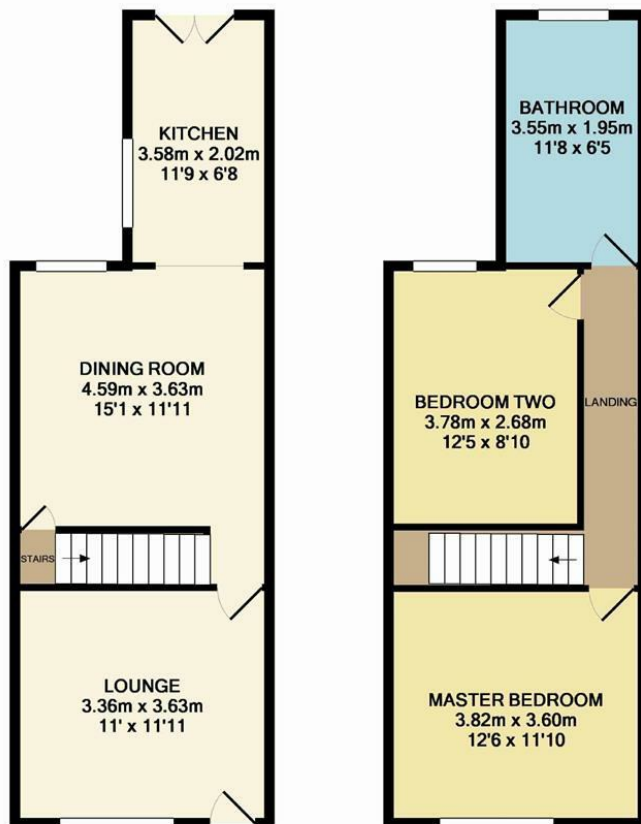
12'5 x 8'10 (3.78m x 2.68m)

Bedroom Two is a comfortable room with a large window that fills the space with natural daylight. It includes built-in shelving, providing useful storage without compromising floor space. The walls are painted in muted tones, and the room is carpeted, offering a cosy place to rest or work.

Bathroom

11'8 x 6'5 (3.55m x 1.95m)

A functional bathroom with a traditional design, the room includes a bath with shower, a toilet, and a washbasin. The walls around the bath are tiled for practicality, and a frosted window brings in natural light while maintaining privacy. The flooring is carpeted, continuing the soft tones seen throughout the home.

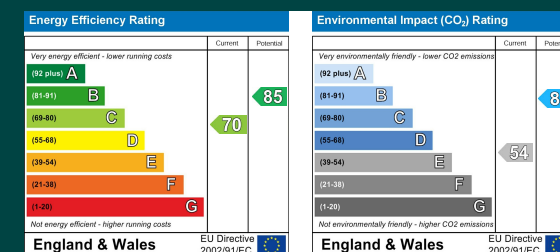


Rear Garden

The rear garden features a paved patio area perfect for outdoor seating and entertaining. Beyond this, a lawn stretches to the back fence, enclosed by wooden panel fencing for privacy. The garden is neatly maintained and provides a pleasant outdoor space for relaxation or play.

Disclaimer

These particulars do not constitute part or all of an offer or contract. While we endeavour to make our particulars fair, accurate and reliable, they are only a general guide to the property and, accordingly. If there are any points which are of particular importance to you, please check with the office and we will be pleased to check the position.



Mansfield branch
24 Albert Street
Mansfield, NG1
01623 621001

Clowne branch
26 Mill Street,
Clowne, S43 4JN
01246 810519

Clay Cross branch
20 Market Street,
Clay Cross, S45 9JE
01246 251194

Chesterfield branch
33 Holywell Street,
Chesterfield, S41 7SA
01246 221039

PINEWOOD

