

Addison Road, W14

£2,500 Per calendar month

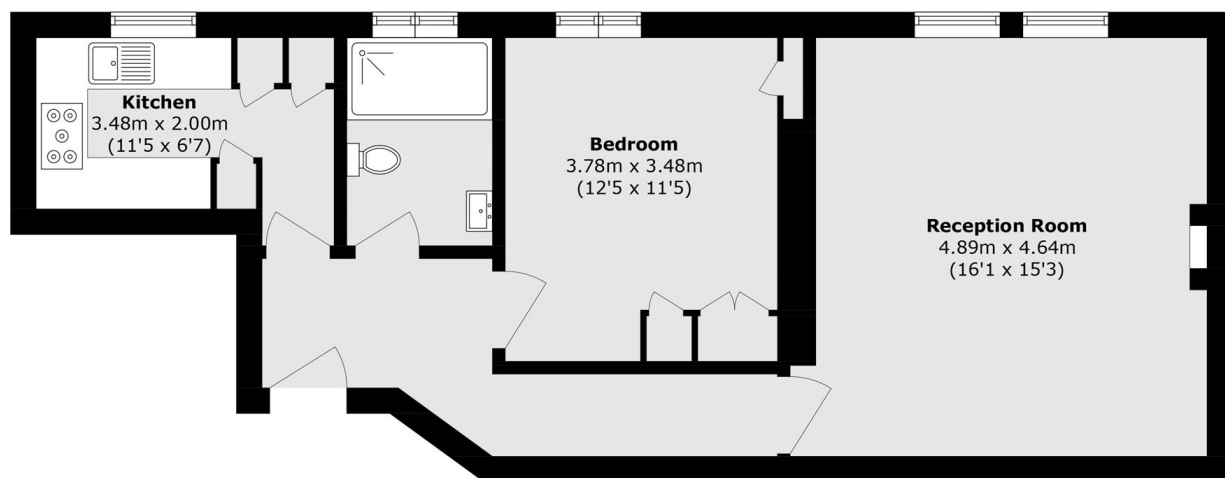
A stylish and generously sized one bedroom flat on the third floor of an impressive period conversion, featuring elegant interiors and charming period details throughout.

Addison Road is perfectly positioned for the boutiques, cafés and restaurants of Notting Hill, as well as the open green spaces of Holland Park and Hyde Park. The property also benefits from excellent transport links and easy access to the extensive shopping and amenities of Westfield London.

Features

One Bedroom
Bright & Spacious
Period Conversion
Integrated Kitchen
Lots Of Storage
Interior Designed
628 Sq Ft

Addison Road, London, W14



Third Floor

Total area (approx.): 58.3 sq. m (627.5 sq. ft)