

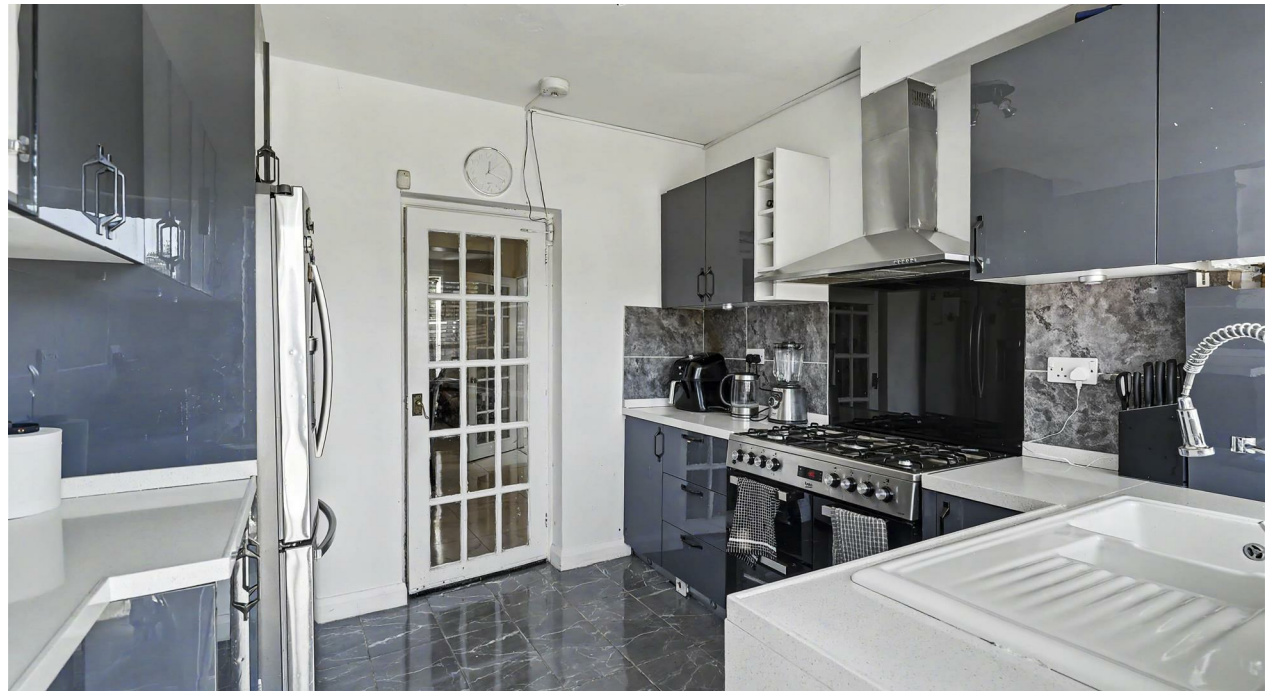
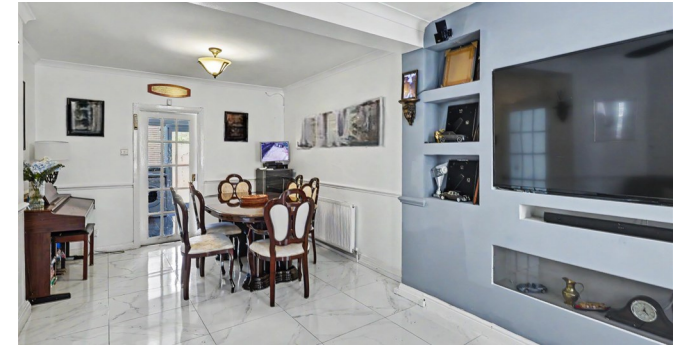


Castles

OFFERS OVER
£550,000
The Hatch
Enfield, EN3 5NH

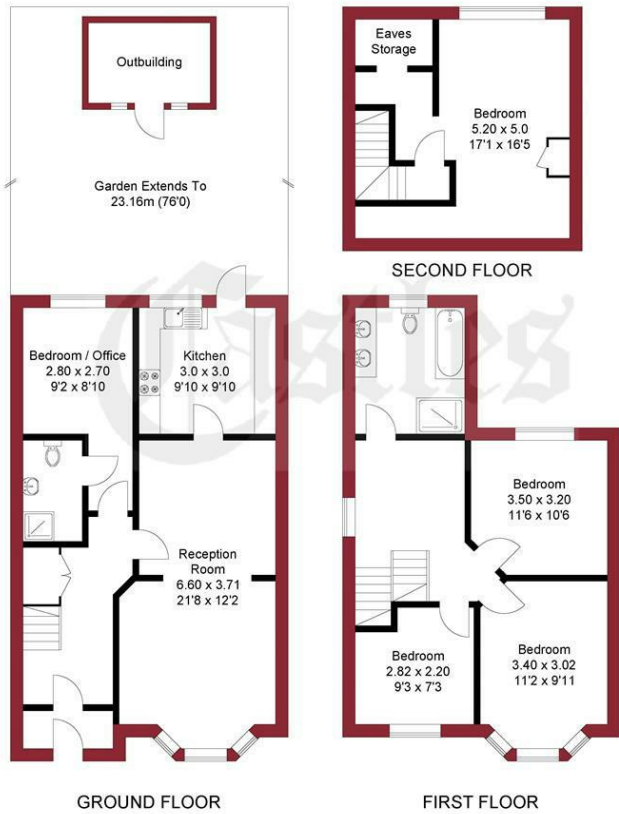
PROPERTY SUMMARY

An extended five bedroom end of terrace family house located off Carterhatch Road in Enfield Highway within 1 mile of Brimsdown train station and close to local schools, shops and parks. The property offers well presented and spacious / flexible family accommodation and an internal viewing is highly recommended. Key Features include front off street parking, good size rear garden with useful outbuilding, family bathroom plus ground floor shower room and spacious living room.



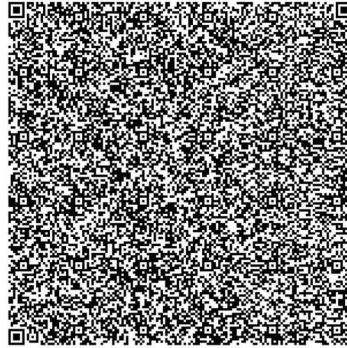


APPROXIMATE GROSS INTERNAL AREA
135.13 sqm / 1454.52 sqft
(Excluding Outbuilding / Eaves)

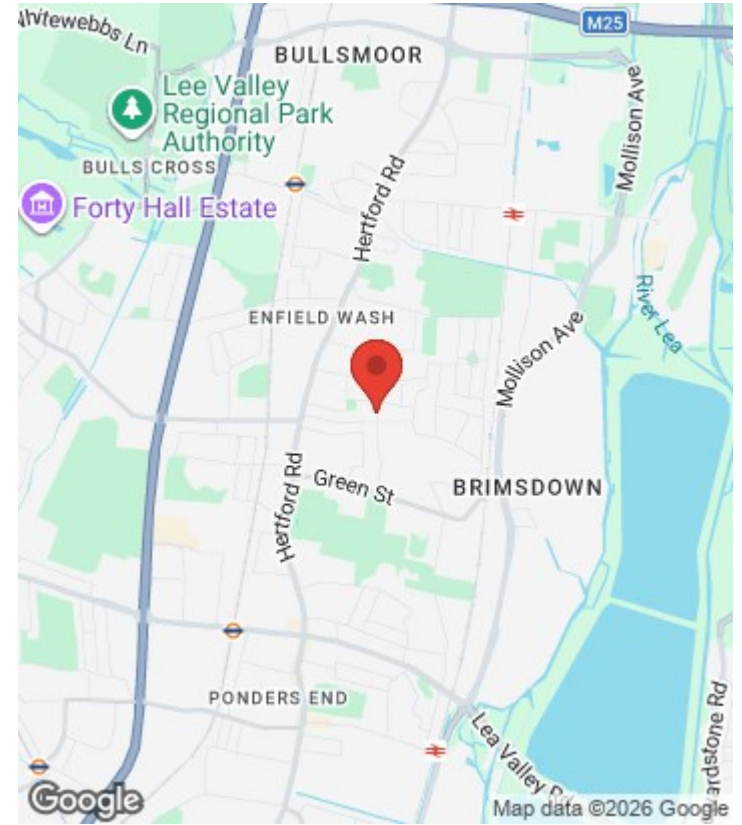


THIS PLAN IS FOR ILLUSTRATION ONLY AND MAY NOT BE REPRESENTATIVE OF THE PROPERTY

For a guide to the area please scan this code for more information



SCAN ME



House - End Terrace

Freehold

Council:

Council Tax Band: C

Agents Note: Whilst every care has been taken to prepare these particulars, they are for guidance purposes only. All measurements are approximate and are for general guidance purposes only and whilst every care has been taken to ensure their accuracy, they should not be relied upon and potential buyers/tenants are advised to recheck the measurements



OFFICE ADDRESS

243 - 245 Hertford Road
Enfield
London
EN3 5JJ

OFFICE DETAILS

0208 804 8000
enfield@castles.london
<https://www.castles.london>

