



**22, Longner Street, Mountfields, Shrewsbury, SY3 8QX**  
£850 Per Month



22, Longner Street, Mountfields, Shrewsbury, SY3 8QX

**£850 Per Month**

VIRTUAL TOUR AVAILABLE: A delightful one bedroom FURNISHED first floor apartment offering balanced living space in a quiet location just a 2 minute walk from Shrewsbury town centre.

Available from: 04/03/26

## Description

Comprising: Stairs to private apartment entrance, kitchen with oven, hob, washer/dryer, dishwasher and fridge/freezer. living and dining space, double bedroom, bathroom with shower over bath, storage cupboard. Double glazing. Ceiling mounted panel heaters. EPC C.



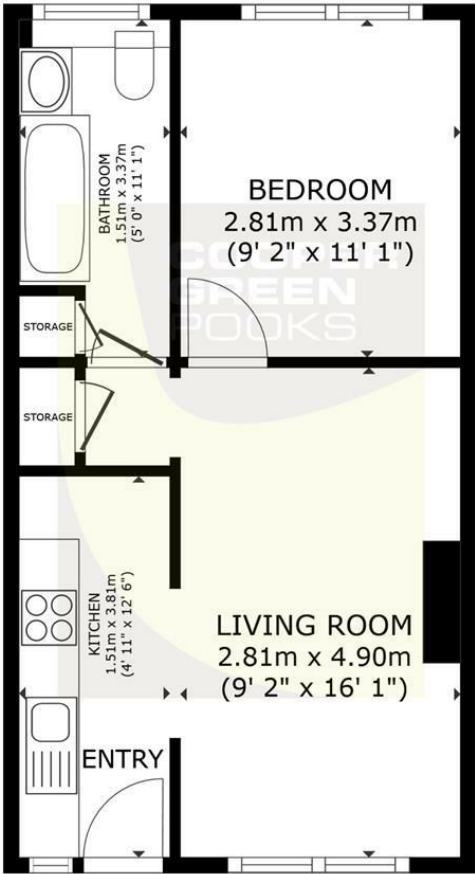
Furnished

Council Tax Band: A

Available: 4th March 2026

EPC: C

Floor Plans



FLOOR PLAN

GROSS INTERNAL AREA  
FLOOR PLAN 37.0 m<sup>2</sup> (398 sq.ft.)  
TOTAL : 37.0 m<sup>2</sup> (398 sq.ft.)  
SIZES AND DIMENSIONS ARE APPROXIMATE, ACTUAL MAY VARY.

These particulars, whilst believed to be accurate are set out as a general outline only for guidance and do not constitute any part of an offer or contract. Intending purchasers should not rely on them as statements of representation of fact, but must satisfy themselves by inspection or otherwise as to their accuracy. No person in this firms employment has the authority to make or give any representation or warranty in respect of the property.