



HW

ESTATE AGENTS

Flat 2, 25 Lewes Crescent, Brighton  
£700,000



## Flat 2

25 Lewes Crescent, Brighton

Spacious ground floor Regency apartment in Lewes Crescent offering 1,168 sq ft of accommodation, two double bedrooms, private rear patio and access to the Kemp Town Enclosures communal gardens. Located moments from the seafront and Kemp Town village.

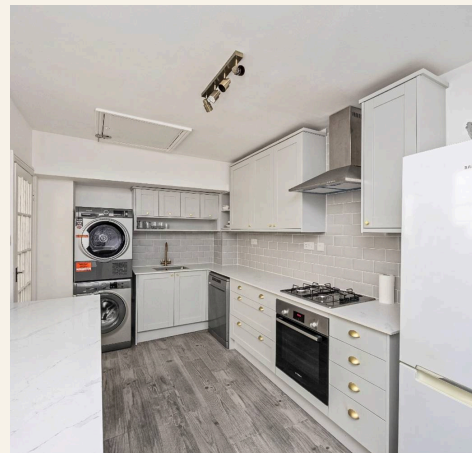
Council Tax band: C

Tenure: Share of Freehold

EPC Energy Efficiency Rating: D

EPC Environmental Impact Rating:

- Guide Price £700,000 to £750,000
- Ground floor Regency apartment
- Approx. 1,168 sq ft of accommodation
- Moments from the seafront and Kemp Town village
- Expansive landscaped communal garden
- Private outdoor terrace
- Modern kitchen with integrated appliances
- High ceilings
- En suite bathroom
- Large living room

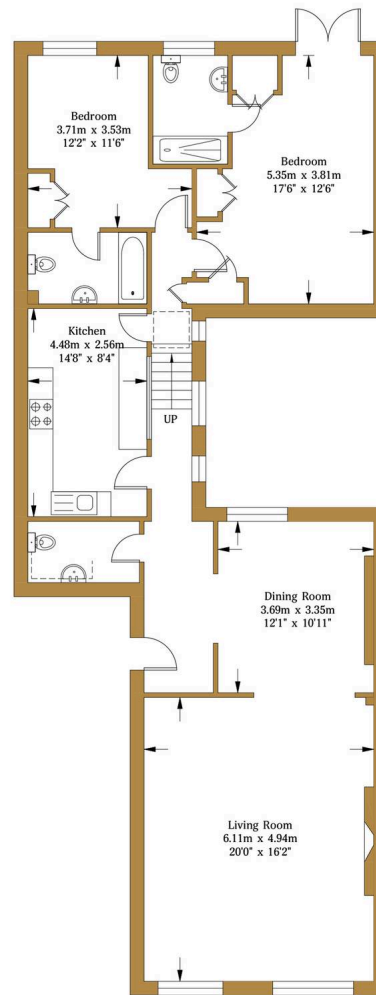




## Lewes Crescent

Approx. Gross Internal Area:- **108.53 sq.m. 1168.20 sq.ft.**

**HW**  
ESTATE AGENTS



**Ground Floor Flat**  
**Approximate Floor Area**  
**1168.20 sq ft**  
**(108.53 sq m)**

Illustration for identification purposes only, measurements are approximate, not to scale.  
© hwestateagents



## HW Estate Agents

HW Estate Agents, 80 Goldstone Villas, Hove - BN3 3RU

01273 359000 · [hove@hwestateagents.co.uk](mailto:hove@hwestateagents.co.uk) · [www.hwestateagents.co.uk](http://www.hwestateagents.co.uk)

HW

ESTATE AGENTS