



# Parkway

## Camden, NW1

Asking Price £875,000

This stunning, laterally spacious, three double bedroom apartment is situated on the second floor within this impressive period conversion, moments from Regent's Park. This wonderful property, complete with a spacious terrace, has just undergone a high quality refurbishment, which included the exterior and the communal areas. It's practically a new-build.

Accommodation comprises of a spacious reception leading into the stylish, fully fitted kitchen. It offers three double bedrooms - one of which is en-suite, and a family bathroom. Long lease, chain-free and low service charges.

**CHESTERTONS**



## Parkway

Camden, NW1

- Second floor with roof terrace
- Beautifully presented
- Located in the heart of Camden Town
- Regents Park is only moments away
- Low service charges and a 999 year lease
- Chain-free



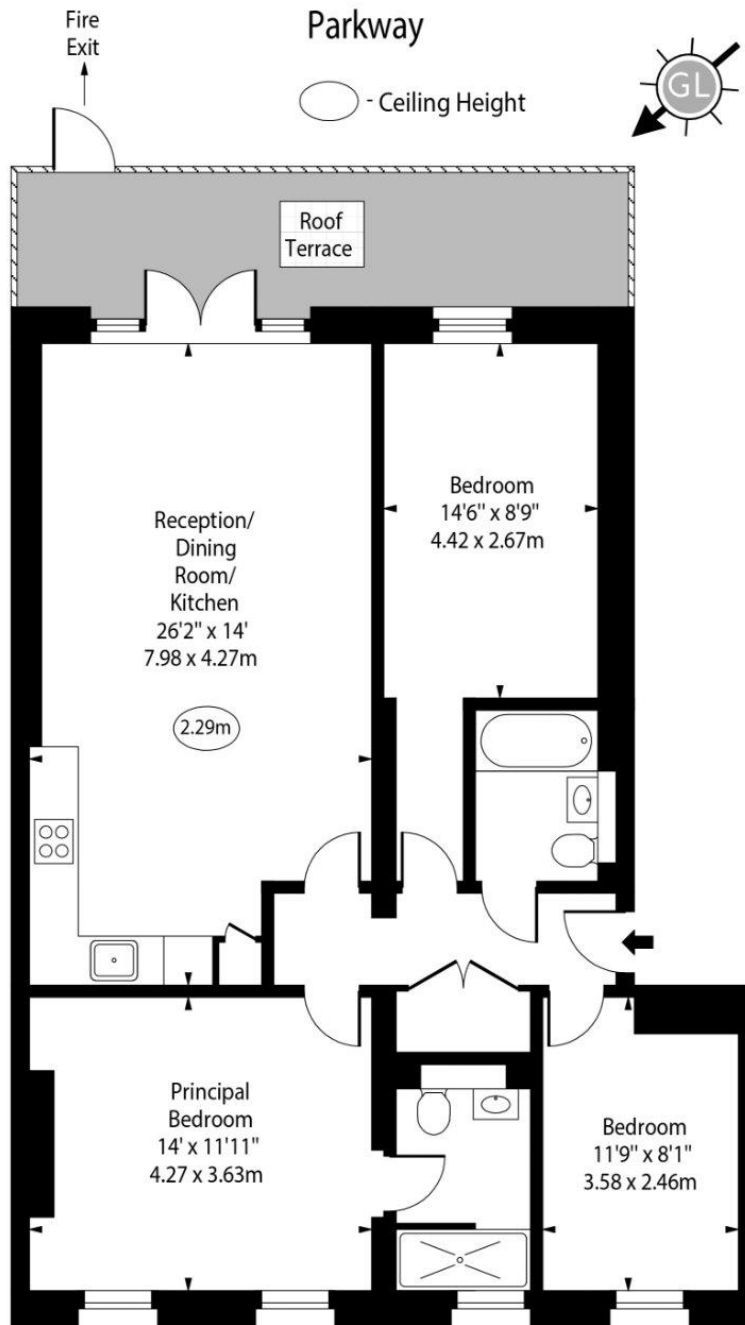
Parkway is ideally situated moments from all the amenities of Camden and close to Camden's underground station which services the Northern Line. The green open spaces of Regent's Park are in close proximity.

**Tenure:** Leasehold with 999 years remaining  
**Service Charge:** AD HOC  
**Ground Rent:** £0  
**Local Authority:** Camden  
**Council Tax Band:** D

Score	Energy rating	Current	Potential
92+	A		
81-91	B		
69-80	C	74 C	74 C
55-68	D		
39-54	E		
21-38	F		
1-20	G		

### *Chestertons Camden & Kentish Town Sales*

99-101 Parkway  
 Camden  
 London  
 NW1 7PP  
 camden@chestertons.co.uk  
 020 7267 2053  
 chestertons.co.uk



Second Floor

Gross Internal Area - 967 Sq Ft - 89.83 Sq M

Approx Gross Internal Area 967 Sq Ft - 89.83 Sq M

Every attempt has been made to ensure the accuracy of the floor plan shown. However, all measurements, fixtures, fittings, and data shown are approximate interpretations and for illustrative purposes only. Measured according to the RICS. Not To Scale.

[www.goldlens.co.uk](http://www.goldlens.co.uk)

Ref. No. 031244K

