



BALHAM HIGH ROAD, SW12

£2,600 per month

This light and bright modern flat comprises of a spacious open plan kitchen living area, wooden flooring, double glazing, two spacious bedrooms, an en suite and separate family bathroom.

Modern Finish
Second floor
Meters from Balham Tube

Two bathrooms
Wandsworth Council
Wooden flooring

STEP INSIDE BALHAM HIGH ROAD

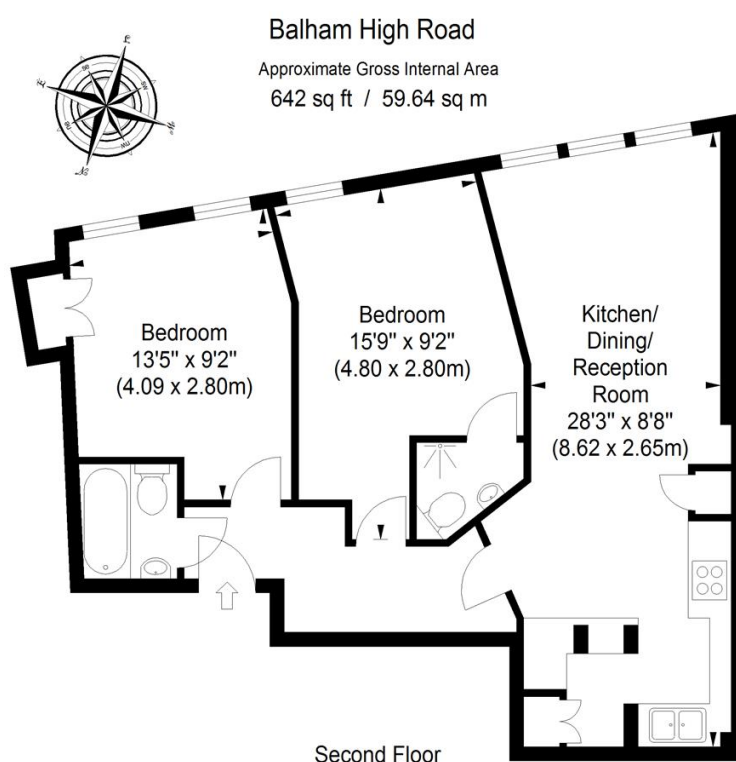


ILLUSTRATION FOR IDENTIFICATION PURPOSES ONLY

ALL MEASUREMENTS ARE MAXIMUM, AND INCLUDE WINDOW BAYS AND WARDROBES WHERE APPLICABLE
THIS PLAN MUST NOT BE REPRODUCED BY ANY OTHER PERSON WITHOUT PERMISSION

Balham & Clapham South
020 8772 9200

Energy Rating: We aim to make our particulars both accurate and reliable. However, they are not guaranteed; nor do they form part of an offer or contract. If you require clarification on any points then please contact us, especially if you're traveling some distance to view. Please note that appliances and heating systems have not been tested and therefore no warranties can be given as to their good working order

MARSH &
PARSONS