



## Sloane Avenue, SW3

£350,000

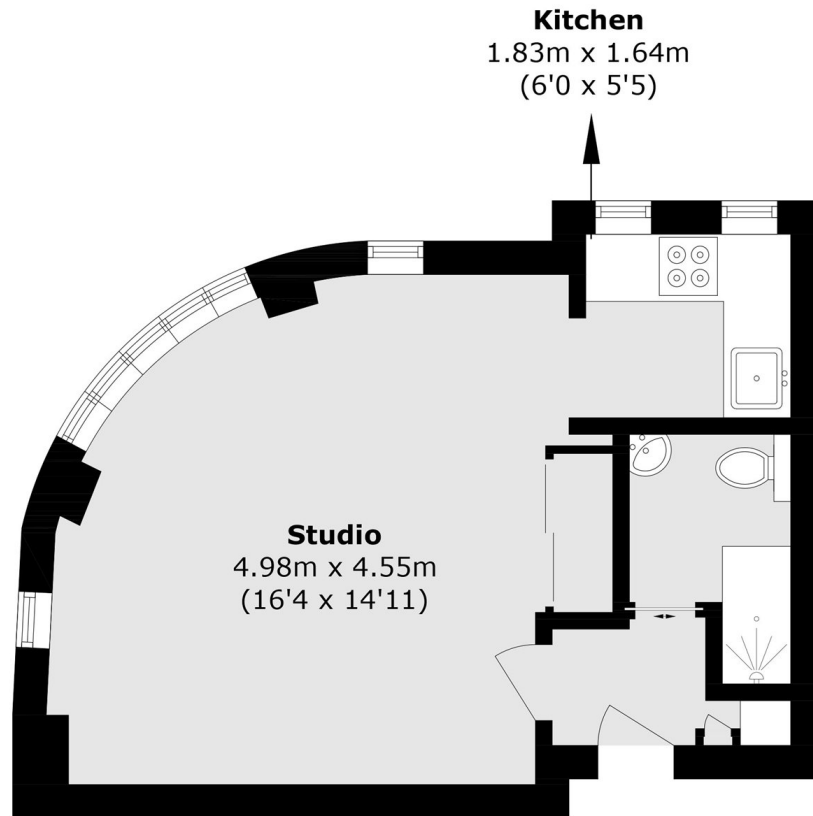
A recently refurbished studio with outstanding views across London. This property has a share of the freehold, a residential porter and would be an ideal rental investment.

Sloane Avenue Mansions is an attractive Art-Deco block positioned moments from Sloane Square. Pavilion Road, Chelsea Green and Duke of York Square are all within walking distance.

### Features

- Share of Freehold
- Studio Apartment
- Porter
- Lift
- Recently Refurbished
- Excellent Views

# Sloane Avenue, London, SW3



## Eighth Floor

Total area (approx.): 28.2 sq. m (303.5 sq. ft)