



The Circle

Queen Elizabeth Street, SE1

Asking Price £425,000

A beautifully presented one bedroom apartment in the iconic Circle development, offering bright modern living, concierge services and an unbeatable Shad Thames location moments from the river and Tower Bridge.

CHESTERTONS



The Circle

Queen Elizabeth Street, SE1

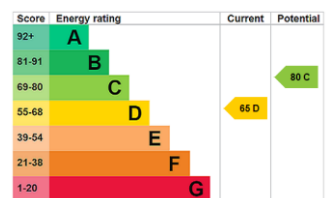
- Bright reception with generous open layout
- Modern bathroom finished in quality stone
- Quiet double bedroom with fitted storage
- Separate kitchen offering practical usable space
- First floor position within iconic development
- Concierge service and secure resident access
- Moments from riverside, restaurants and cafes
- Excellent transport links via London Bridge
- Allocated parking space



Situated within the prestigious Circle development on Queen Elizabeth Street, this stylish one bedroom apartment offers bright, well arranged living space in one of SE1's most sought after riverside neighbourhoods. The property features a generous reception room with a distinctive angled façade that allows excellent natural light and provides ample space for both lounging and dining. A separate kitchen sits just off the hallway, offering good storage and worktop space. The double bedroom is peaceful and well proportioned, complemented by a modern bathroom finished in high quality tiling with contemporary fittings. Set on the first floor with a practical and welcoming layout, the apartment is ideal for anyone seeking a comfortable and well presented home moments from the river.

Residents of The Circle benefit from an iconic architectural setting, concierge services and secure entry, all within a beautifully maintained development. Shad Thames remains one of the capital's most characterful districts, known for its warehouse conversions, cobbled streets and vibrant selection of restaurants, cafés and bars. The apartment is perfectly placed for Tower Bridge, Bermondsey Street and the riverside walkways, while London Bridge station provides excellent connections across London. This property is an appealing option for first time buyers, investors or those searching for a well located pied à terre in a highly desirable part of SE1.

Tenure: Leasehold 985 years 6 months
Service Charge: £4670
Ground Rent: £500
Local Authority: Southwark Council
Council Tax Band: D

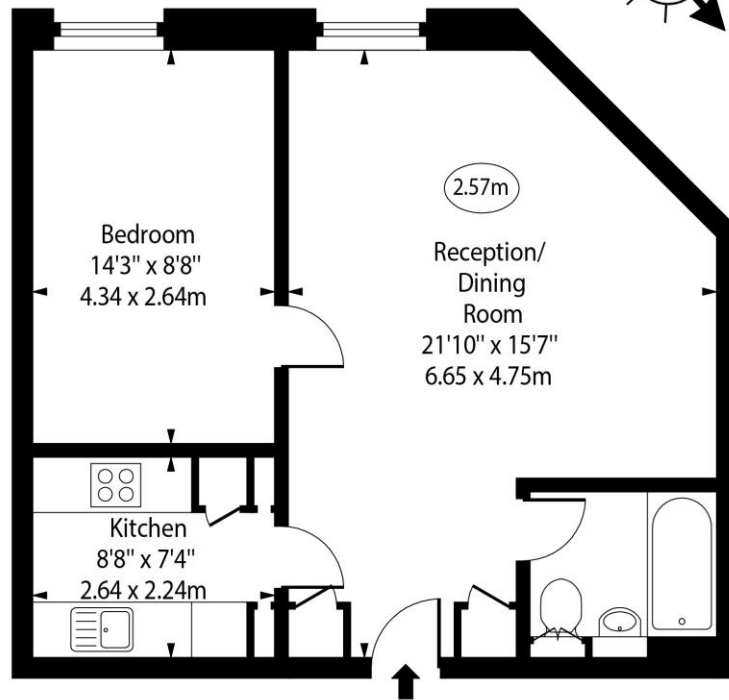


Chestertons Tower Bridge Sales

220 Tower Bridge Road
 Tower Bridge
 London
 SE1 2UP
 towerbridge@chestertons.co.uk
 020 7357 7999
 chestertons.co.uk

The Circle,
Queen Elizabeth Street, SE1

○ - Ceiling Height



First Floor

Approx Gross Internal Area 522 Sq Ft - 48.49 Sq M

Every attempt has been made to ensure the accuracy of the floor plan shown. However, all measurements, fixtures, fittings, and data shown are approximate interpretations and for illustrative purposes only. Measured according to the RICS. Not To Scale.

www.goldlens.co.uk

Ref. No. 030873K

