



# Norroy Road

## Putney, SW15

Asking Price £700,000

A beautifully renovated split level two bedroom, two bathroom period home, offering in excess of 1000 sq. ft. Conveniently located on Norroy Road, in West Putney.

**CHESTERTONS**



# Norroy Road

## Putney, SW15

- Spacious reception room
- Two large bedrooms
- Two Bathrooms
- Renovated eat-in kitchen
- Quiet street in fantastic location in central Putney
- Juliet balcony
- Moments from the amenities of Putney High Street
- In excess of 1000 sq. ft



A beautifully renovated split level two bedroom, two bathroom period home, offering in excess of 1000 sq. ft. Conveniently located on Norroy Road, in West Putney.

On the pretty, tree-lined Norroy Road is this turn-key ready period home. On the first floor is a large eat in kitchen, with plenty of storage and preparation space. The kitchen has been fully renovated by the current owners with modern fixtures and fittings, offering a great space to entertain.

At the front of the house is the large reception room, with large windows, balcony and period features throughout. This sizeable room offers flexible accommodation and offers a great space to relax and unwind.

Set across the top floor are two generously proportioned double bedrooms as well as two bathrooms, one of which was renovated three years ago.

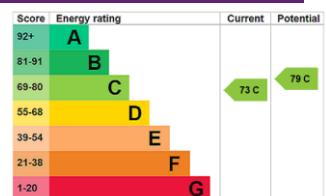
The house is ideally located close to the wealth of amenities on Putney High Street, as well as Putney mainline station, despite being tucked away on this quiet and desirable side road. The house is also located close to both primary and secondary schools.

**Tenure:** Leasehold 990 years 3 months

**Service Charge:** £250 pa (50% contribution to building insurance of £600 pa )

**Local Authority:** London Borough of Wandsworth

**Council Tax Band:** E



### *Chestertons Putney Sales*

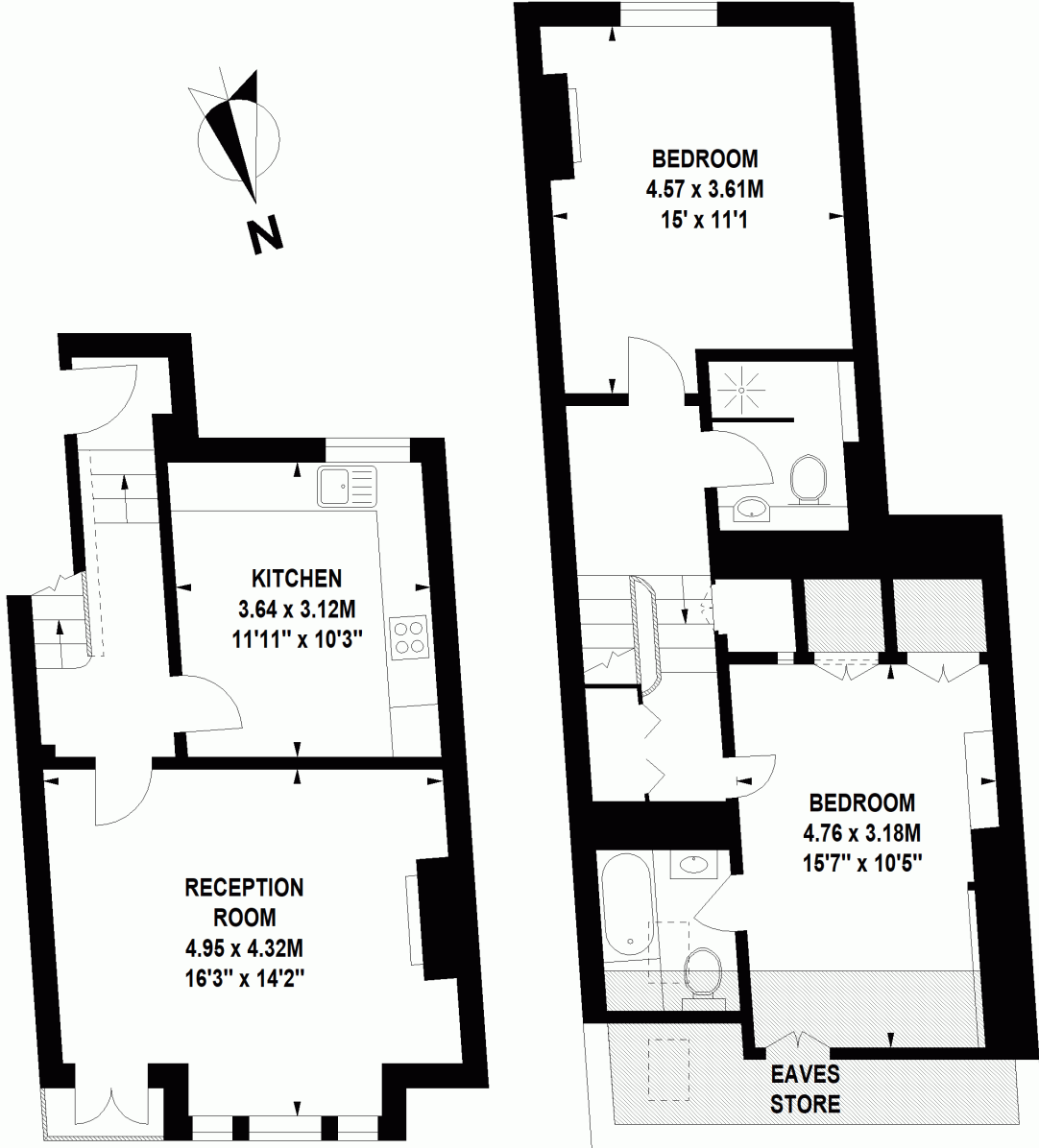
153 Upper Richmond Road  
 London  
 SW15 2TX  
 putney@chestertons.co.uk  
 020 8246 5959  
 chestertons.co.uk

# Norroy Road , SW15

Approximate Gross Internal Area 96 sq m / 1033 sq ft  
Including Eaves Storage of 5 sq m / 54 sq ft



Under 1.5m head height



**First Floor**

**Second Floor**

Floor Plan produced for Chestertons by Mays Floorplans © . Tel 020 3397 4594

Illustration for identification purposes only, not to scale

All measurements are maximum, and include wardrobes and window bays where applicable

