



**POOLE
TOWNSEND**

Smeaton Street, Barrow-In-Furness, LA14 2EB

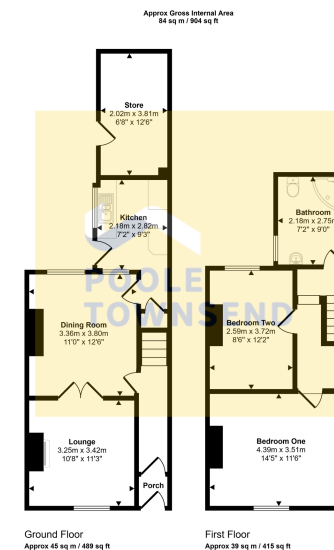
£75,000

🛏️ 2 🚿 1 🚗 2



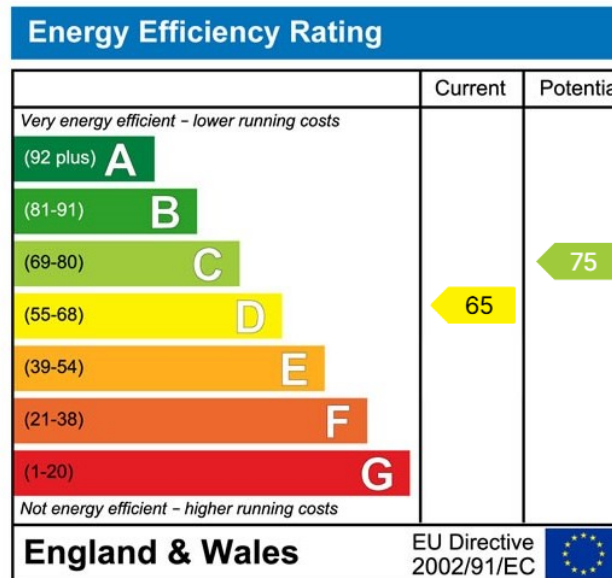
- Mid Terraced Property
- Popular Location
- NO UPPER CHAIN
- Open Plan Living Space
- Kitchen
- Two Bedrooms
- Bathroom
- Enclosed Rear Yard
- Council Tax Band A





This floorplan is only for illustrative purposes and is not to scale. Measurements of rooms, doors, windows, and any items are approximate and no responsibility is taken for any error, omission or mis-statement. Sizes of items such as bathroom suites are representative only and may not look like the real items. Made with Magic Spazzy 360.

NEW ** This mid-terraced home presents an excellent opportunity for a range of buyers, particularly first-time purchasers and investors seeking a property in a popular location with scope to update and personalise to their own tastes. Offered for sale with no onward chain, the accommodation features open-plan living space, a generously proportioned kitchen to the rear, two bedrooms and a bathroom. Loft has been boarded, lighting has been installed as well as a pull down ladder. Externally, the property benefits from an enclosed rear courtyard and useful external store. Offering plenty of potential, this home is ready for its next chapter.



Visit us at
www.pooletownsend.co.uk
enquiries@pooletownsend.co.uk

We are open
 Monday – Friday 9.00 – 5.00
 Saturday 9.00 – 1.00

Barrow 01229 811811
 Ulverston 01229 588111
 Grange 015395 33316
 Kendal 01539 734455
 Milnthorpe 015395 62044