



Caledonian Road, N1

£950,000 pcm

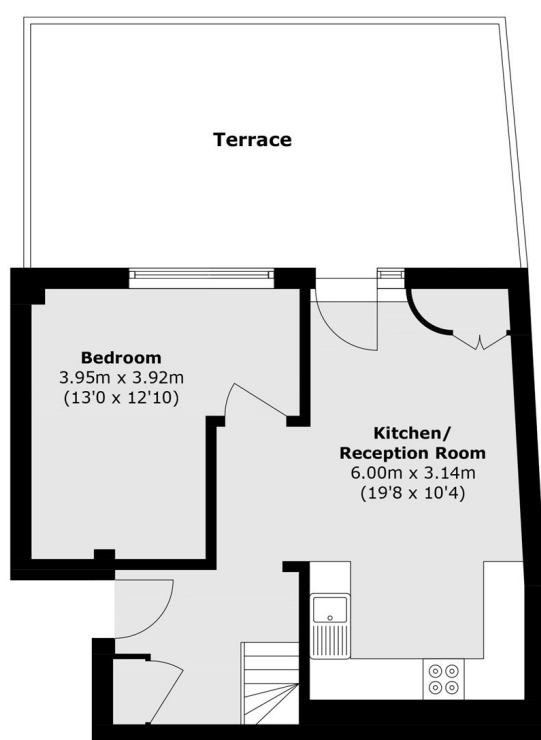
Located across the first and second floors, the accommodation comprises an open-plan kitchen/living area, three double bedrooms, a study, a family bathroom, and a large private

Bridge Wharf sits beside Regent's Canal and offers modern riverside living close to King's Cross, Granary Square, cafés, creative spaces, and excellent transport links.

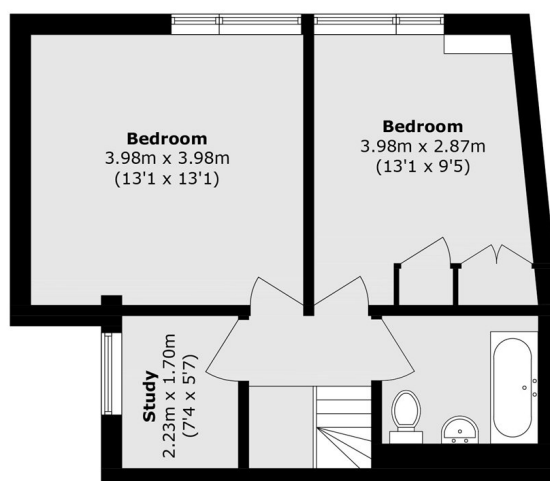
Features

- Three Double Bedrooms
- Private Terrace
- Separate Study
- Off Road Parking
- Excellent Condition
- No Onward Chain

Caledonian Road, London, N1



First Floor



Second Floor

Total area (approx.): 85.2 sq. m (917.0 sq. ft)
Terrace area (approx.): 25 sq. m (269.1 sq. ft)

Contact

To arrange a viewing call our office on the number below or visit our website.



Energy Rating: . We aim to make our particulars both accurate and reliable. However they are not guaranteed; nor do they form part of an offer or contract. If you require clarification on any points then please contact us, especially if you're traveling some distance to view. Please note that appliances and heating systems have not been tested and therefore no warranties can be given as to their good working order.