



Dyne Road, NW6

£550,000

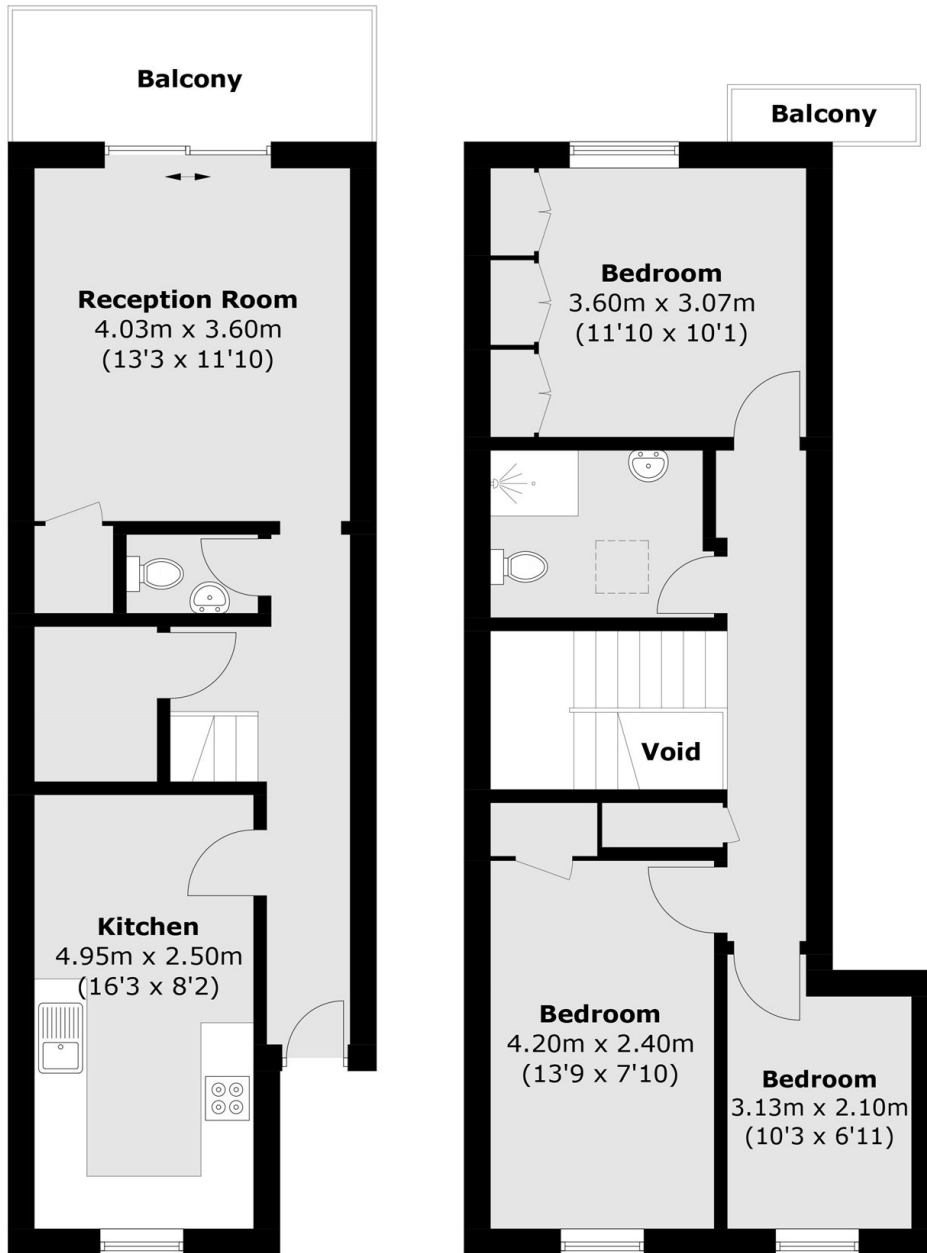
This three bedroom flat is located on the first and second floors of this purpose built block and has direct access to a private balcony. The property will be sold with no onward chain.

Dyne Road is near to the numerous shops, cafés and restaurants of Queens Park's Salusbury Road. Excellent transport links include both Brondesbury Park and Brondesbury Overground stations and Kilburn underground

Features

- Three Bedrooms
- Duplex Apartment
- Private Balcony
- Separate Kitchen
- Close To Station
- No Onward Chain

Dyne Road, London, NW6



Ground Floor

First Floor

Total area (approx.): 88.3 sq. m (950.5 sq. ft)
(Including Void)

Balcony : 7.4 sq. m (79.6 sq. ft)