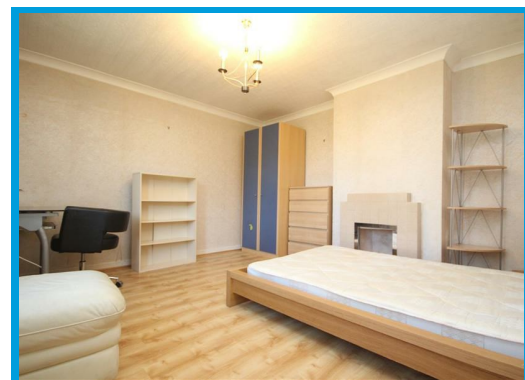
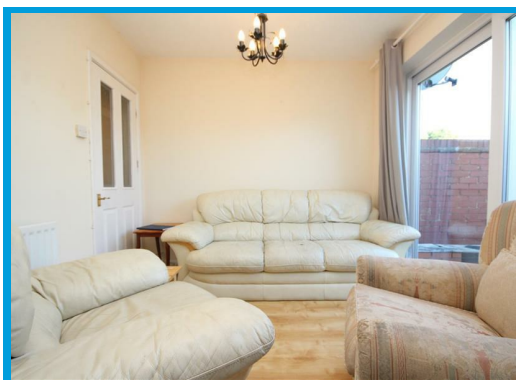




Stoughton Road, Guildford Surrey, GU1 1LL

£2,850 PCM

**** STUDENT ACCOMODATION 2026-2027 ACADEMIC YEAR**** Ideal for SHARERS and STUDENTS. Located on the outskirts of Guildford Town centre. This well presented four bedroom house is arranged over three floors and offers spacious, light and airy accommodation.



Description

**** STUDENT ACCOMODATION 2026-2027 ACADEMIC YEAR**** Located on the outskirts of Guildford town centre, this spacious four bedroom house is arranged over three floors and presented in good order throughout.

The property comprises an entrance hall leading to the first double bedroom downstairs, kitchen with appliances, small reception area, cloakroom and separate utility area, leading onto the garden.

On the first floor there is a two large double bedrooms and a newly fitted modern family bathroom with shower over bath.

On the top floor there is a double bedroom, with a walk in wardrobe and a en-suite shower room with W.C.

Benefits include a good size garden.

