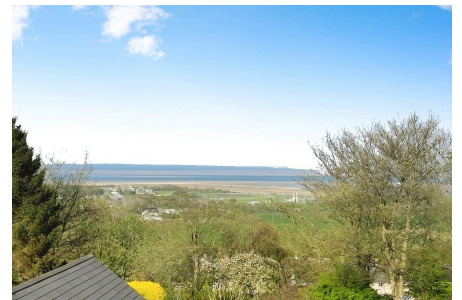
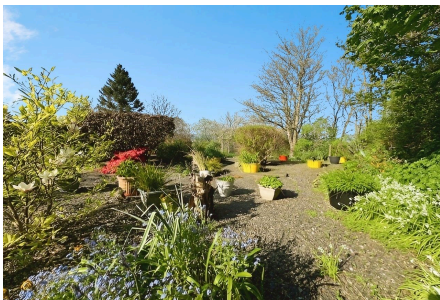


1 Maes Villas, Gwespyr, Flintshire CH8 9LL

£173,000

2 1 2

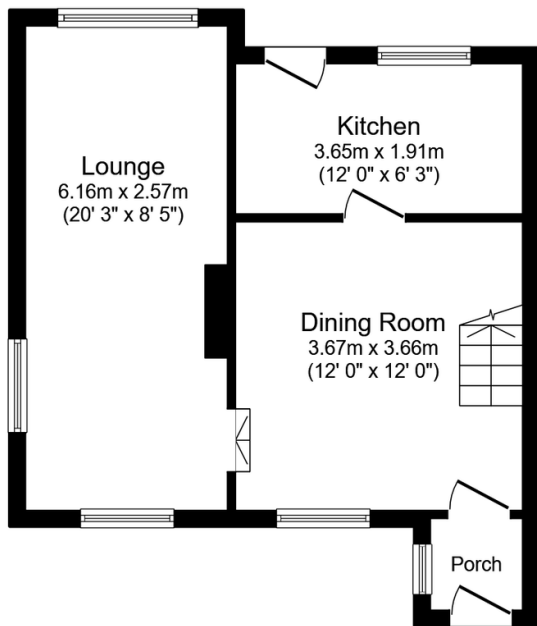


This end of terrace two bedroom cottage is situated in the elevated village of Gwespyr and enjoys a wealth of charm and character having a surprisingly large rear garden with well established shrubs, plants and trees. It benefits from views towards the coast with two reception rooms, galley style kitchen and a driveway.

**DIRECTIONS** From Prestatyn proceed through the village of Gronant and turn right signposted Gwespyr, continue up the hill and the property will be seen on the left hand side.

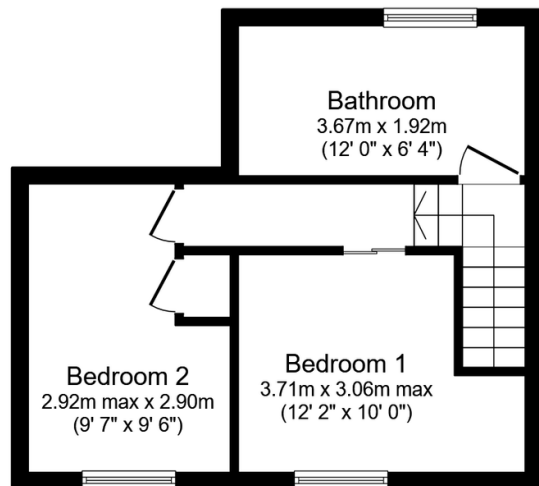
## Key Features

- ELEVATED VILLAGE LOCATION
- END OF TERRACE COTTAGE
- LARGE REAR GARDENS
- VIEWS TOWARDS THE COAST
- DRIVEWAY
- TWO RECEPTION ROOMS
- TWO BEDROOMS
- SOLID FUEL & ELECTRIC HEATING
- COUNCIL TAX - C EPC - G
- FREEHOLD



Ground Floor

Floor area 38.6 sq.m. (416 sq.ft.)



First Floor

Floor area 30.5 sq.m. (329 sq.ft.)

Total floor area: 69.1 sq.m. (744 sq.ft.)

This floor plan is for illustrative purposes only. It is not drawn to scale. Any measurements, floor areas (including any total floor area), openings and orientations are approximate. No details are guaranteed, they cannot be relied upon for any purpose and do not form any part of any agreement. No liability is taken for any error, omission or misstatement. A party must rely upon its own inspection(s). Powered by [www.Propertybox.io](http://www.Propertybox.io)