



Spencer.

Park Grange Court, Norfolk Park, Sheffield

Rent —

A spacious three bedroom duplex apartment in Norfolk Park, available 7th September

— from *Spencer.*

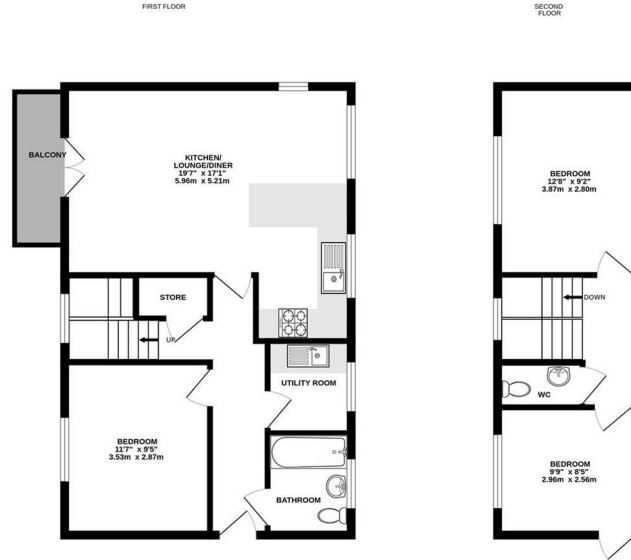
-
- 3 BEDROOM DUPLEX APARTMENT
 - FURNISHED
 - AVAILABLE 7th SEPTEMBER
 - Security Deposit £1265
 - Holding Deposit £250
 - EPC Rating C
 - Council Tax Band A



£1,100 PCM



Floorplan



TOTAL FLOOR AREA: 893sq ft (83.0 sq m.) approx.

While every attempt has been made to ensure the accuracy of the floorplan contained here, measurements of walls, windows, doors and any other items are approximate and no responsibility is taken for any error, omission or mis-statement. This plan is for illustrative purposes only and should be used as such by any prospective purchaser. The services, fixtures and appliances shown here are not being offered and no guarantee as to their operation or efficiency is given.
Made with Metaplan 10/20

Spencer.

+44 (0)114 268 3682

info@spencersestateagents.co.uk

469 Ecclesall Road, Sheffield, S11 8PP

SpencersEstateAgents.co.uk

SpencersAgents

SpencersAgents

SpencersEstateAgents

All enquiries and negotiations conducted via the Spencers office. We are obliged under the Estate Agent Act 1991 to qualify all offers and an independent mortgage consultant will speak to you to substantiate your details. The particulars are set out as a general outline only for guidance and do not constitute part of an offer or contract. Measurements are given in good faith and believed to be correct. Any prospective buyer should satisfy themselves as to the correctness of all statements and should not rely on them as representation of fact. No person in the employment of Spencers has any authority to make or give representation or warranty whatever in relation to this property.

Viewing: Via the Agents

Spencers Agents Ltd, 469 Ecclesall Road, Sheffield S11 8pp | Registered in England No. 7565948