

# 6 Manor Road

Waltham Abbey

Council Tax band: D

Tenure: Freehold

- Three double bedroom Victorian home
- Chain free
- Driveway
- Two ensuite shower rooms
- Open plan kitchen / family room
- Opportunity to add own stamp
- Private garden
- Short walk to town centre shops
- Easy access to M25



Hammond  
& Smith

**Entrance**

**WC**

**Living Room**

13' 1" x 11' 2" (4.00m x 3.40m)

**Dining / Family Room**

19' 8" x 18' 4" (6.00m x 5.60m)

**Kitchen**

19' 0" x 10' 6" (5.80m x 3.20m)

**Bedroom**

13' 1" x 12' 10" (4.00m x 3.90m)

**Ensuite Shower Room**

**Bedroom**

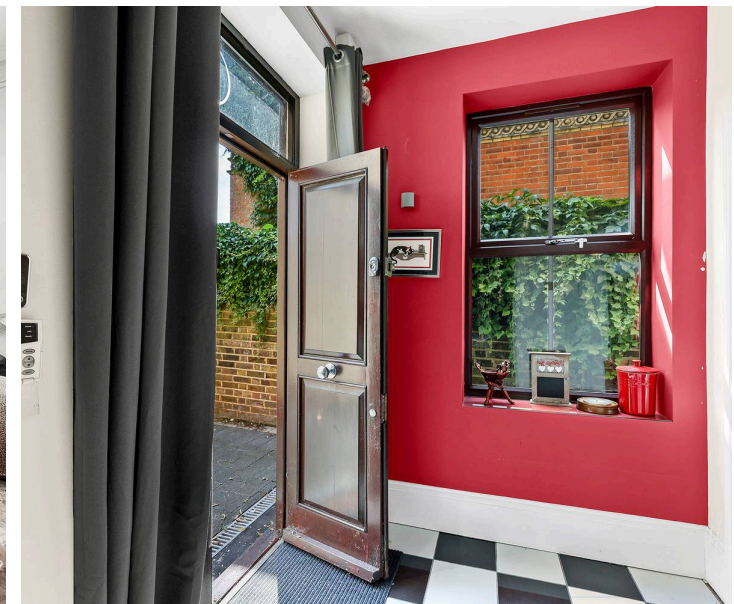
13' 1" x 11' 2" (4.00m x 3.40m)

**Ensuite Shower Room**

**Bedroom**

14' 9" x 12' 6" (4.50m x 3.80m)

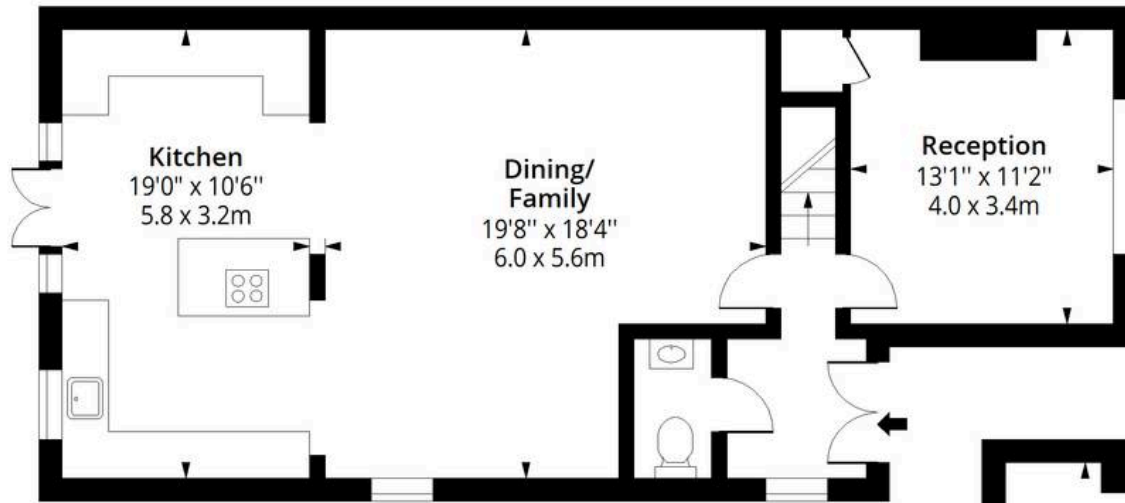
**Bathroom**





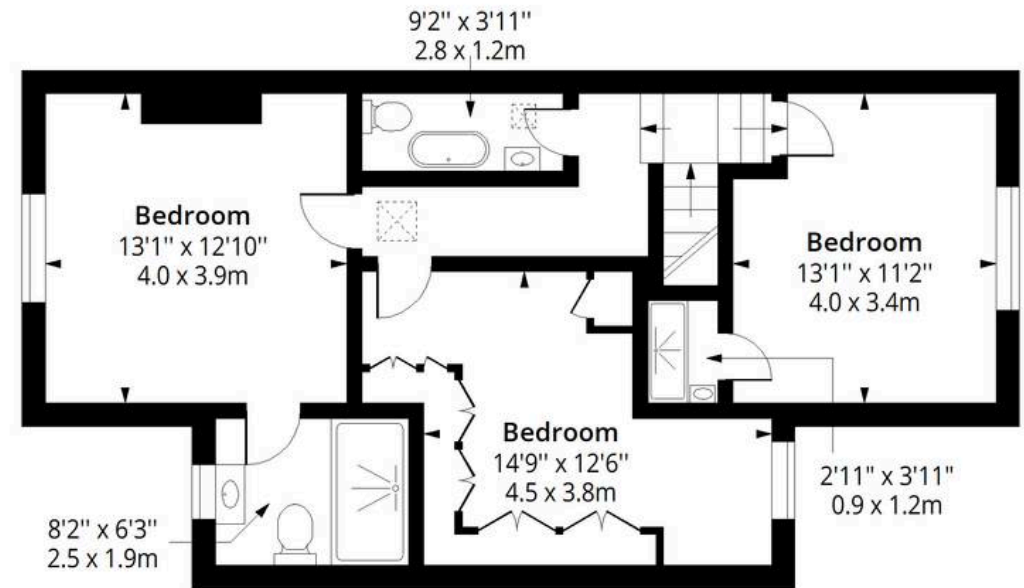
# Manor Road EN9

Approx. Gross Internal Area 1472 Sq Ft - 136.75 Sq M



## Ground Floor

Floor Area 780 Sq Ft - 72.46 Sq M



## First Floor

Floor Area 692 Sq Ft - 64.29 Sq M



Measured according to RICS IPMS2. Floor plan is for illustrative purposes only and is not to scale. Every attempt has been made to ensure the accuracy of the floor plan shown, however all measurements, fixtures, fittings and data shown are an approximate interpretation for illustrative purposes only. 1 sq m = 10.76 sq feet.

Date: 29/6/2026