

Frank Harris & Co.



Leigh Street, WC1H

£600 Per week

A charming and beautifully presented one-bedroom period conversion, situated on the first floor of a well-maintained building. This bright and inviting apartment blends classic features with contemporary finishes, including parquet flooring, integrated storage, and modern kitchen appliances.

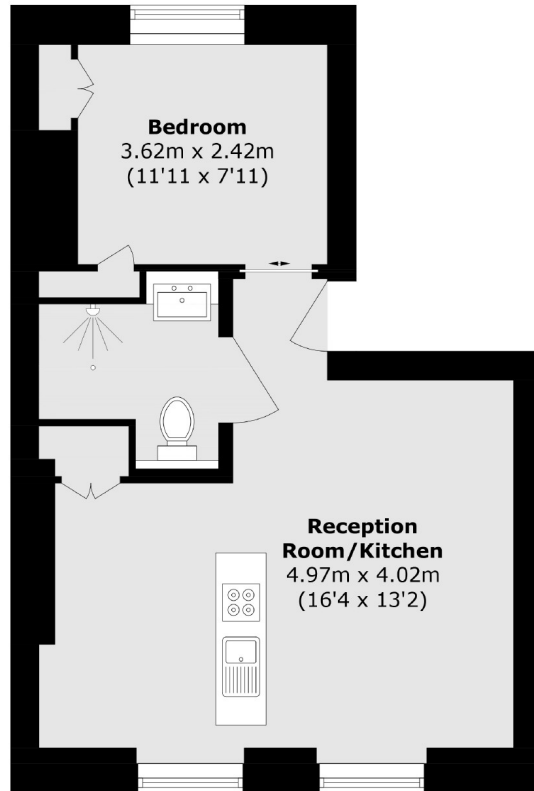


The flat is ideally located just minutes from both St Pancras International and Russell Square stations, offering excellent transport links in either direction. It also sits close to the Grade II listed Brunswick Centre, home to a wide array of restaurants, shops, and Central London's largest Waitrose supermarket.

- Period Apartment • Parquet Flooring • Quiet Location •
- Great Storage • Modern Appliances • Second Floor •



Frank Harris & Co.



Total area (approx.): 31.0 sq. m (333.6 sq. ft)

Frank Harris & Co. Bloomsbury and Kings Cross

81 Marchmont Street,

London, WC1N 1AL

020 7387 0077

bloomsburylettings@frankharris.co.uk

Energy Rating: . We aim to make our particulars both accurate and reliable. However they are not guaranteed; nor do they form part of an offer or contract. If you require clarification on any points then please contact us, especially if you're traveling some distance to view. Please note that appliances and heating systems have not been tested and therefore no warranties can be given as to their good working order.

