



Milcote Street, SE1

£525,000

A highly attractive modern apartment featuring two double bedrooms, a spacious open-plan living area and a fully fitted contemporary kitchen, with ample space for a large dining table. The property also offers a generous modern bathroom and a private balcony accessible directly from the living room.

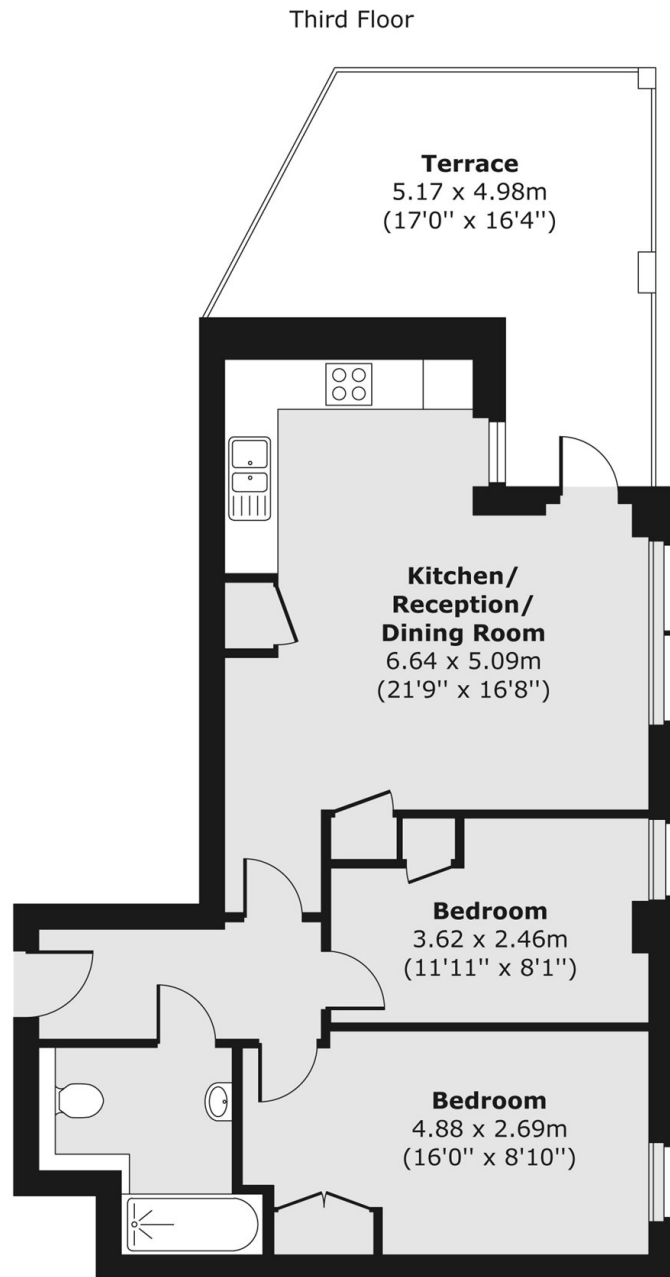
Muro Court is tucked just off Blackfriars Road in the heart of London, moments from Waterloo Station, Southwark Station, and London Bridge Station.

A short walk leads to the vibrant Borough Market, the Thames and the cultural landmarks of Tate Modern and Shakespeare's Globe - a dynamic mix of food, art, and entertainment.

Features

- High Specification
- Open Plan Living Space
- Private Balcony
- Two Double Bedrooms
- Secure Entry & Lift Access
- Long Lease

Milcote Street, London, SE1



Total area (approx.) 59.56 sq. m (641 sq. ft)
Terrace area (approx.) 16.98 sq. m (183 sq. ft)