



HEMMINGS HOMES

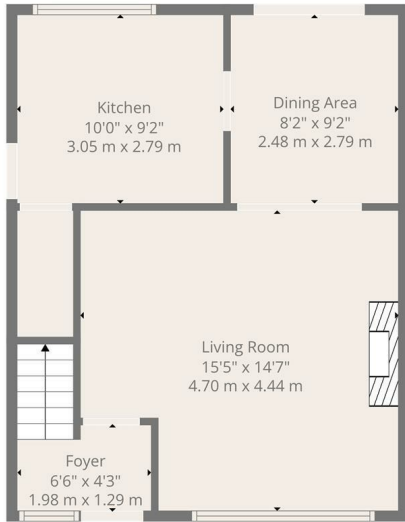
OFFERS OVER

£200,000

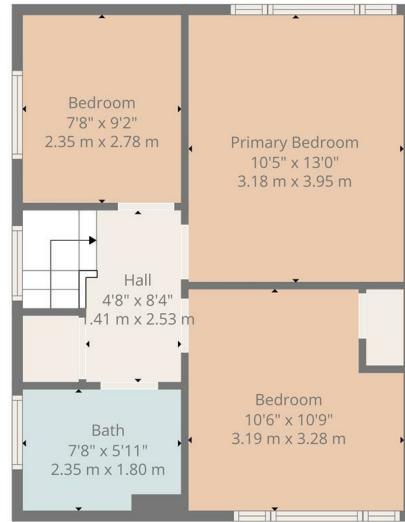
Airbles Crescent

Motherwell, ML1 3AR





Ground Floor



1st Floor



TOTAL: 890 sq. ft. 82 m²
 Ground floor: 445 sq. ft. 41 m², 1st floor: 445 sq. ft. 41 m²
 EXCLUDED AREAS: WALLS: 86 sq. ft. 8 m²

Floor Plan Created By Cubicasa App. Measurements Deemed Highly Reliable But Not Guaranteed.



Energy Efficiency Rating		Current	Potential
Very energy efficient - lower running costs			
(92 plus)	A		
(81-91)	B		
(69-80)	C		
(55-68)	D		
(39-54)	E		
(21-38)	F		
(1-20)	G		
Not energy efficient - higher running costs			
Scotland		65	78
		EU Directive 2002/91/EC	

Agents Note: Whilst every care has been taken to prepare these particulars, they are for guidance purposes only. All measurements are approximate and are for general guidance purposes only and whilst every care has been taken to ensure their accuracy, they should not be relied upon and potential buyers/tenants are advised to recheck the measurements



HEMMINGS HOMES

OFFICE ADDRESS

376 Brandon Street
 Motherwell
 North Lanarkshire
 ML1 1XA

OFFICE DETAILS

01698 263413
 enquiries@hemmingshomes.co.uk
 hemmingshomes.co.uk