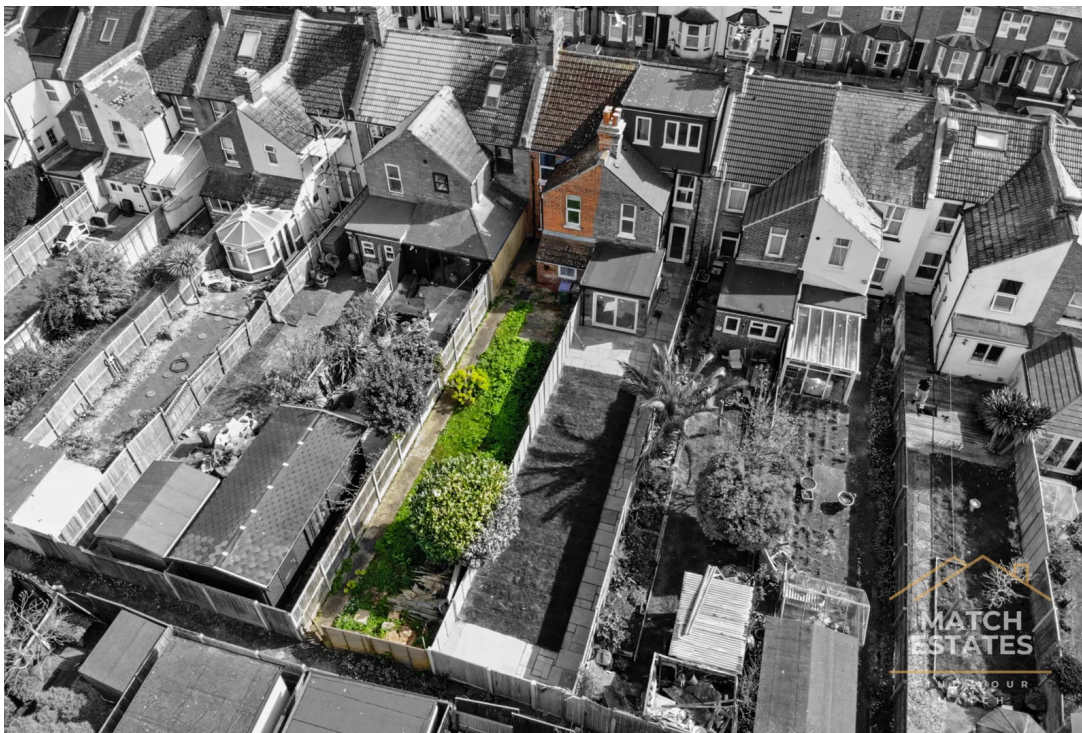


Frampton Road, Hythe, Kent  
Hythe

MATCH  
ESTATES  
Guide Price  
**£300,000**



**Bedrooms: 2 | Bathrooms: 1 | Receptions: 2**

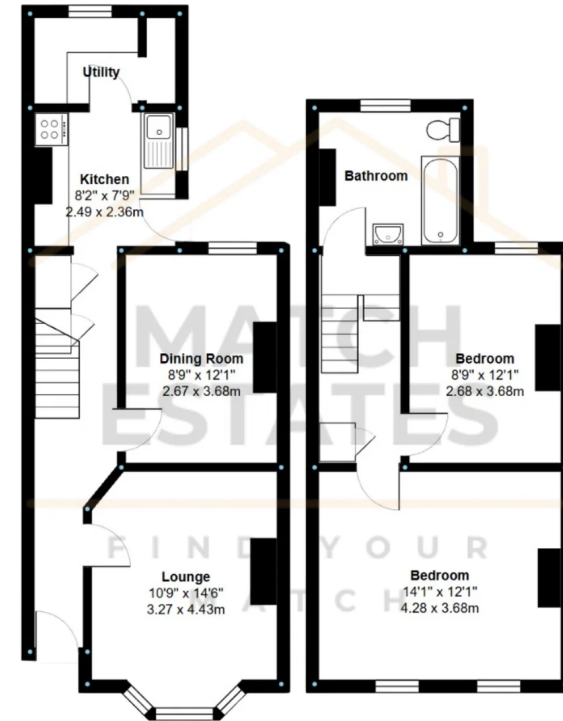
This charming Victorian bay-fronted terrace offers the quintessential Hythe lifestyle, perfectly positioned on level ground just a short stroll from the vibrant High Street. Imagine Saturday mornings starting with a walk along the historic Royal Military Canal or a coffee at one of the town's many independent boutiques and cafés, all before heading home to a property that balances period character with modern potential. With the rare benefit of No Onward Chain, this is a seamless opportunity for first-time buyers, downsizers, or those looking for a coastal retreat.

Inside, the home feels bright and welcoming, featuring two distinct reception rooms that retain their original soul with period-style fireplaces. The front lounge, with its classic bay window, is the perfect spot to settle in for the evening, while the separate dining room provides a great social space for entertaining. The kitchen is crisp and functional, fitted with modern white gloss cabinetry and a handy adjoining utility area for extra storage. Upstairs, a split-level landing leads to two genuine double bedrooms—both featuring charming decorative fireplaces—and a generous family bathroom.

The outdoor space is a particular highlight; the rear garden is a good-sized, level "blank canvas," offering plenty of room for alfresco dining, a vegetable patch, or simply a quiet spot to enjoy the coastal air. To the front, there is ample on-road parking and a small enclosed garden that adds to the property's curb appeal. Whether you're commuting to London in under an hour via the high-speed link at Folkestone West or enjoying a sunset walk along the unspoilt seafront, this home places the very best of Kent right on your doorstep. Having been recently refreshed, it is ready to move into while still offering the scope to add your own personal flair and finish.







Measurements are approximate and for display purposes only

## Match Estates

B3 Bouverie House 16 Bouverie Place Folkestone CT20 1AE

01303 475 085

folkestone@match-estates.co.uk

<https://www.match-estates.co.uk/>