



## Northfield Avenue, W13

£2,900 Per calendar month

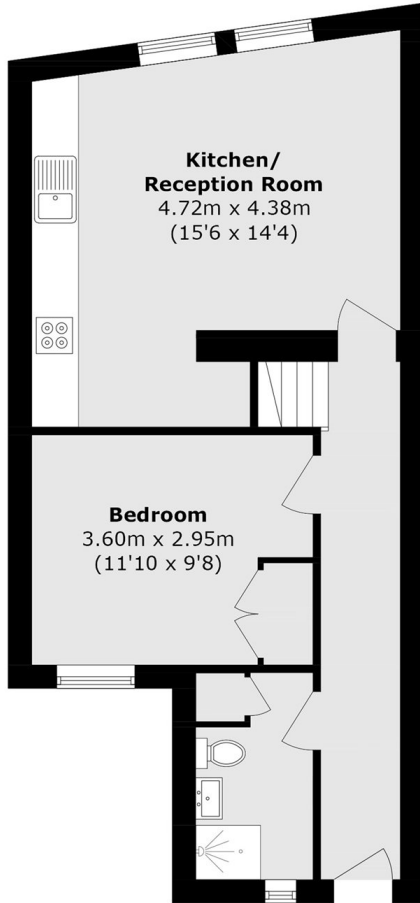
A beautifully refurbished split level apartment offering bright, contemporary living with generous entertaining space, two spacious double bedrooms, a separate office and the added benefit of a private garden.

Located on Northfield Avenue, moments from a number of cafés, restaurants and shops, with Northfields Station nearby and easy access to the open spaces of Lammas and Walpole Parks.

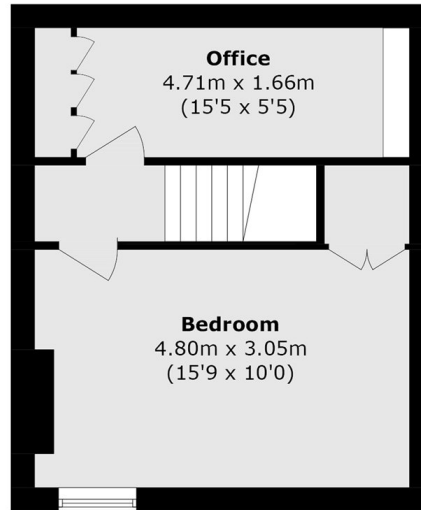
### Features

Newly Refurbished  
Two Bedroom  
Split Level  
Private Garden  
Close to Station  
Furnished

# Northfield Avenue, London, W13



**First Floor**



**Second Floor**

Balcony area (approx.): 72.3 sq. m (778.2 sq. ft)