



Wheel Road, Alpington - NR14 7NH



Wheel Road

Alpington, Norwich

OCCUPYING AN IMPRESSIVE 0.23 ACRE PLOT (stms), this EXTENDED DETACHED BUNGALOW and ANNEXE offers approximately 1195 Sq. ft (stms) of versatile accommodation, thoughtfully UPDATED and REFURBISHED IN 2018, including comprehensive ELECTRICAL UPGRADES, Boiler and Plumbing. Situated in a SOUGHT AFTER VILLAGE LOCATION opposite the HIGHLY REGARDED ALPINGTON VILLAGE SCHOOL, the heart of the bungalow is a 16' DUAL ASPECT SITTING ROOM, perfect for relaxing with family or entertaining guests, complemented by a 19' KITCHEN/DINING ROOM with FRENCH DOORS opening directly onto the garden, seamlessly blending indoor and outdoor living. Adaptable to your lifestyle needs, the property provides up to FOUR BEDROOMS and the family bathroom, offering flexibility for family life or those seeking dedicated WORK-FROM-HOME SPACE. The SELF-CONTAINED ANNEXE is a standout feature, comprising its own bedroom, living area, shower room, and utility room, ideal for multi-generational living, guest accommodation, or independent rental potential.



Practicality is further enhanced with ample storage options, a WELCOMING HALL ENTRANCE, and a well-considered layout that maximises both space and natural light throughout. The GARDEN truly sets this property apart, with mature, PRIVATE LAWNS wrapping around the home and offering a tranquil retreat for gardening enthusiasts, children, or those who enjoy al fresco dining and entertaining. An IN & OUT DRIVEWAY provides generous off-road parking for multiple vehicles, leading to a DETACHED GARAGE and additional STORAGE.

Council Tax band: D

Tenure: Freehold

- Extended Detached Bungalow with Annexe Options
- Occupying a 0.23 Acre Plot (stms)
- Approx. 1195 Sq. ft (stms) of Accommodation
- Updated & Refurbished in 2018 including Electrical Upgrades
- 16' Dual Aspect Sitting Room & 19' Kitchen/Dining Room with French Doors to the Garden
- Up to Four Bedrooms
- Self Contained Annexe with Bedroom, Living, Shower Room & Utility Room
- Large Plot Incorporating Private Gardens, In & Out Driveway, Garage and Storage



Alpington is a small village situated some five miles south east of the Cathedral City of Norwich and closely associated with the neighbouring village of Yelverton. The village itself is just south of the A146 and is contiguous with Yelverton to the south with which it shares its facilities, which include a duckpond, village hall and St. Mary's church. Further amenities can be found in the larger village of Poringland, whilst a short drive takes you to the City Centre itself.

SETTING THE SCENE

Set back from the road and accessed via an 'in and out' shingle driveway, ample off road parking and turning space can be found with access leading to the adjacent carport. Mature high level hedging screens the property from the road with an area of lawn to front and gated access to the rear garden.

THE GRAND TOUR

Once inside, the hall entrance offers the ideal meet and greet space with wood effect flooring underfoot, range of built-in storage cupboards and the loft access hatch above. A part glazed entrance door takes you to the formal sitting room, centred on a feature fireplace with dual aspect views to front and side including a large picture window to front which overlooks the front garden. A fitted carpet flows through the space with a door taking you to the adjacent kitchen/dining room - also enjoying dual aspect views and with French doors leading out to the patio seating area. The kitchen itself offers a u-shape arrangement of base level units with space for an electric cooker, tiled splash-backs and an extractor fan above. Integrated appliances include a fridge and dishwasher, along with a built-in breakfast bar and ample space for a dining table. As you head up the hallway, the smaller of the bedrooms can be found on your right hand side, creating an ideal single bedroom or study. With a front facing window and fitted carpet underfoot, the adjacent double bedroom includes a built-in double wardrobe, with a further bedroom sitting opposite including views across the rear garden.

The family bathroom has been fitted to include a three piece suite with a mixer shower tap over the bath, tiled splash-backs, wood effect flooring and a heated towel rail.

At the end of the hallway, a door takes you to the potential annexe accommodation which is currently used as an extension to the main property with a study area, side facing window and tiled effect flooring underfoot. Doors lead off to a further bedroom enjoying views over the front garden and with fitted carpet underfoot, and also to a inner lobby with space for coats and shoes, and a door taking you to the utility room and shower room. The shower room offers a modern white three piece suite including a hand wash basin with built-in storage below and walk-in shower cubicle with tiles and tiled effect flooring. The utility/kitchenette offers extensive storage with space for white goods including a fridge freezer, washing machine and tumble dryer, with dual aspect garden views and a door taking you to the rear lobby and garden beyond.

FIND US

Postcode : NR14 7NH

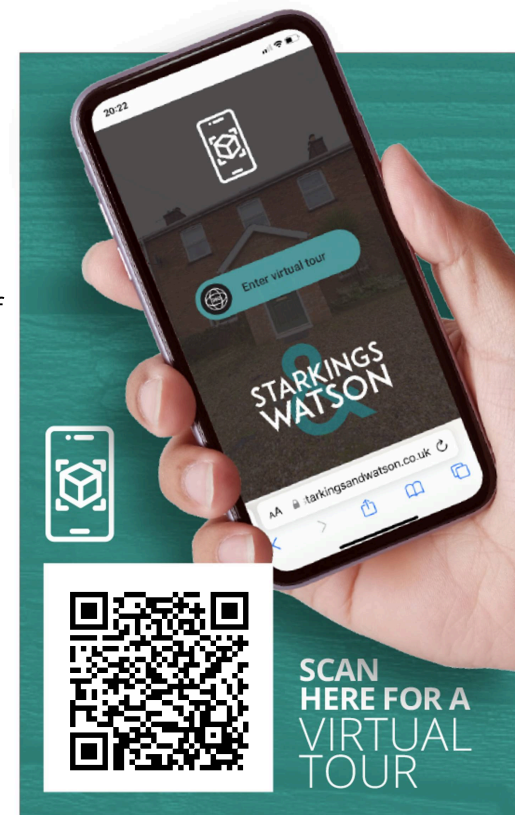
What3Words : ///canine.trending.blemishes

VIRTUAL TOUR

View our virtual tour for a full 360 degree of the interior of the property.

AGENTS NOTES

A new Immersion tank was replaced 3 years ago.



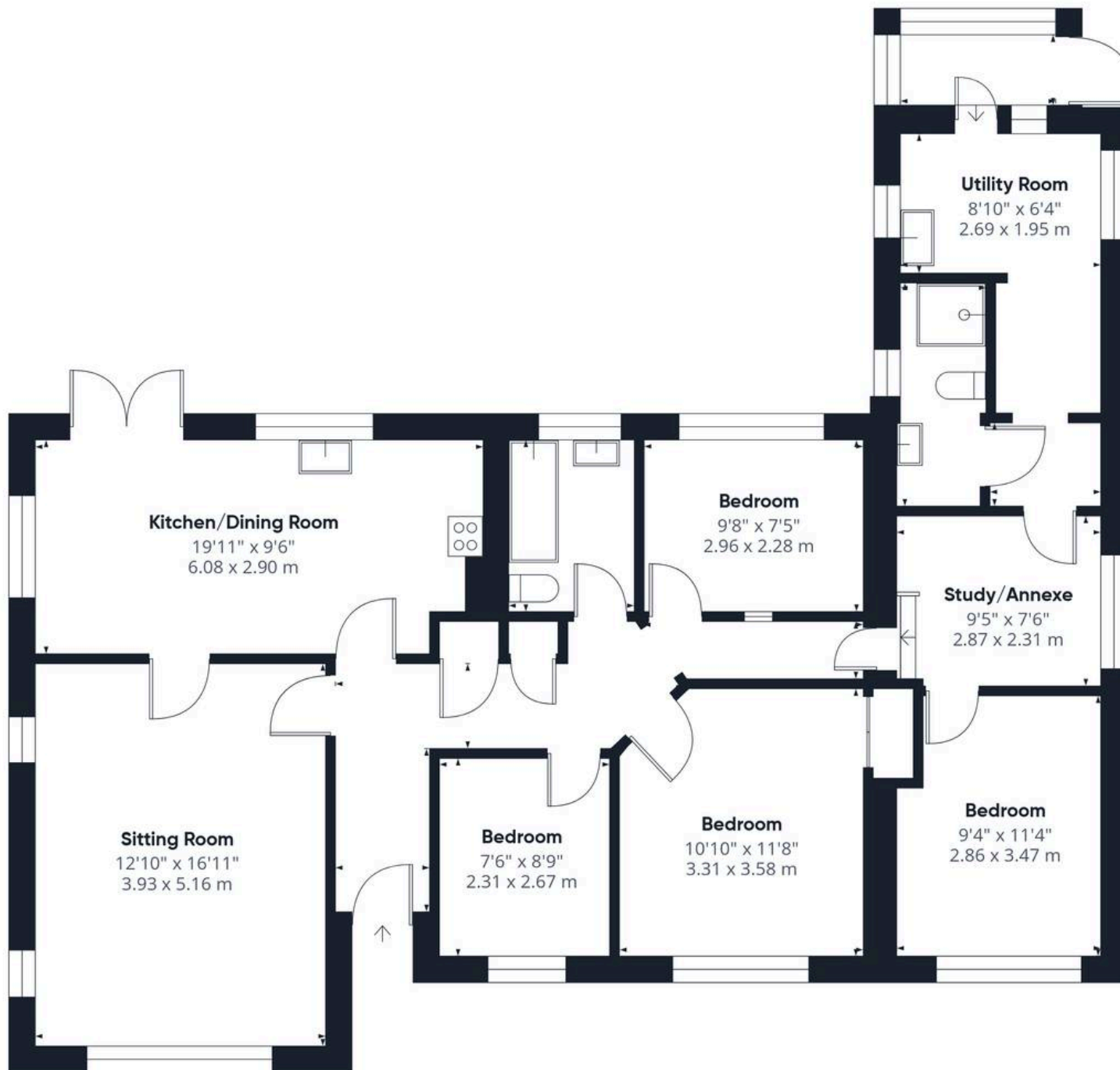




THE GREAT OUTDOORS

Heading outside, the rear garden is laid to lawn and enjoys a private non-overlooked rear aspect, enclosed within timber panel fencing and mature hedging. A patio seating area extends from the kitchen French doors with a wide variety of mature high level hedges and shrubbery to the rear boundary. The oil tank is screened to one side, with a timber shed and garage located adjacent, whilst tucked away at the rear of the garden a brick built shed provides further storage. The garage is accessed via an up and over door to front and door to side.





Approximate total area⁽¹⁾

1195 ft²
111.2 m²

(1) Excluding balconies and terraces

Calculations reference the RICS IPMS 3C standard. Measurements are approximate and not to scale. This floor plan is intended for illustration only.

GIRAFFE360





Starkings & Watson Hybrid Estate Agents

2A Shotesham Road, Poringland - NR14 7LE

01508 356456 • poringland@starkingsandwatson.co.uk • starkingsandwatson.co.uk

Disclaimer: Whilst every care has been taken to prepare these sales particulars, they are for guidance purposes only. All measurements are approximate and for general guidance purposes only and whilst every care has been taken to ensure their accuracy, they should not be relied upon and potential buyers are advised to recheck the measurements.