

## West Cromwell Road, SW5

£276 Per week

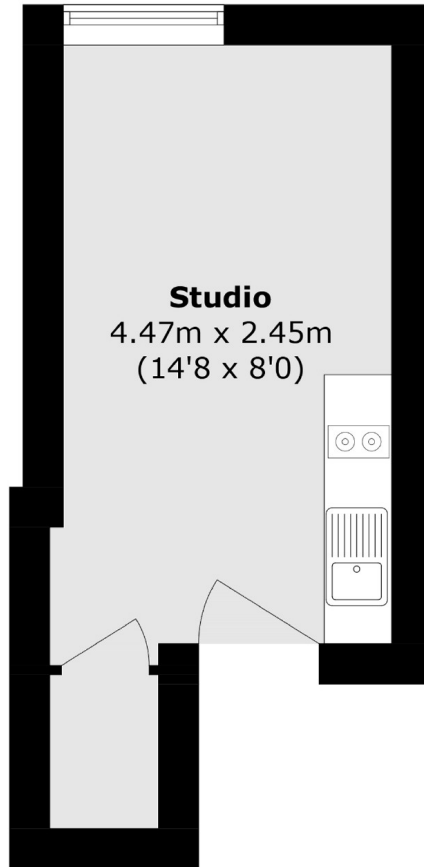
A modern studio flat located between High Street Kensington and Earls Court. The flat has new carpets, a double bed, storage, a private kitchen, all bills included and a bathroom which is shared.

West Cromwell Road is conveniently located with easy access to Earls Court and High Street Kensington Stations as well as the local shops, restaurants and amenities on offer.

### Features

- Studio
- Shared Bathroom
- Spacious
- Private Kitchen Facilities
- Excellent Central Location
- Single Professionals Only

West Cromwell Road,  
London, SW5



## Second Floor

Total area (approx.): 12.1 sq. m (130.2 sq. ft)