



27a Pack Lane, Oakley - RG23 7BE

£500,000 Freehold

VILLAGE LOCATION • 2 DOUBLE BEDROOMS • STUDY • OFF ROAD DRIVEWAY PARKING • PRIVATE REAR GARDEN WITH EXCELLENT PRIVACY • CHAIN FREE

01256 321777

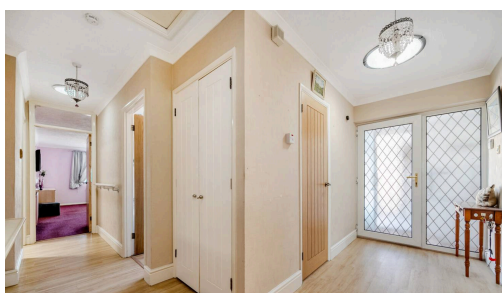
www.thepropertyexplorer.co.uk

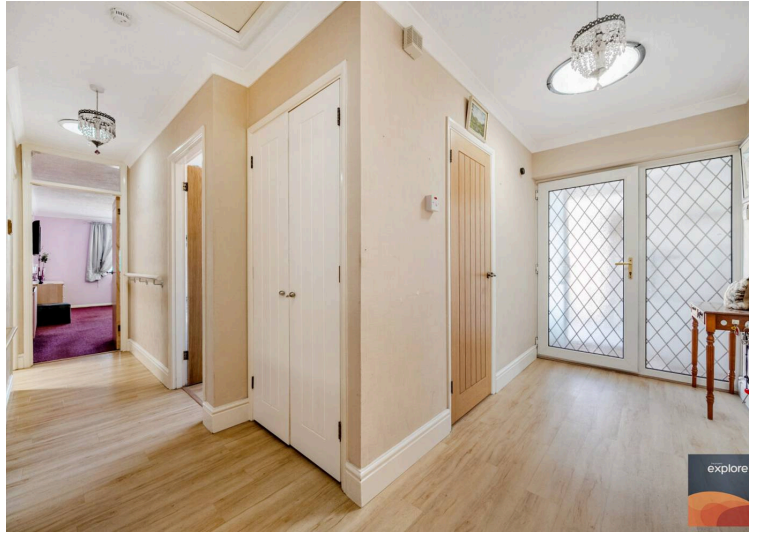
the property
explorer

This exceptional extended two/three-bedroom detached bungalow sits on a wonderfully private plot, boasting a peaceful sunny rear garden with an outstanding level of seclusion. The property also benefits from driveway parking and generously proportioned accommodation, offering excellent flexibility. Beautifully positioned and rarely available, this is a home that must be viewed to be fully appreciated. Pack Lane, Oakley is perfectly positioned within easy reach of a wide range of local amenities, including a convenience store, healthcare facilities, and excellent schooling. Oakley Village itself offers an attractive semi rural setting with green open spaces, tree lined surroundings, and a strong sense of community. For commuters, communications are excellent with convenient access to both the A30 and M3 motorway. Basingstoke railway station also provides direct and regular fast train services to London Waterloo in under an hour. Directions: RG23 7BE. Leave Basingstoke heading west along the B3400 towards Oakley, Overton and Whitchurch. Upon entering Oakley, turn left after The Fox Inn into Fox Lane. Continue



- › VILLAGE LOCATION
- › 2 DOUBLE BEDROOMS
- › STUDY
- › OFF ROAD DRIVEWAY PARKING
- › PRIVATE REAR GARDEN WITH EXCELLENT PRIVACY
- › CHAIN FREE





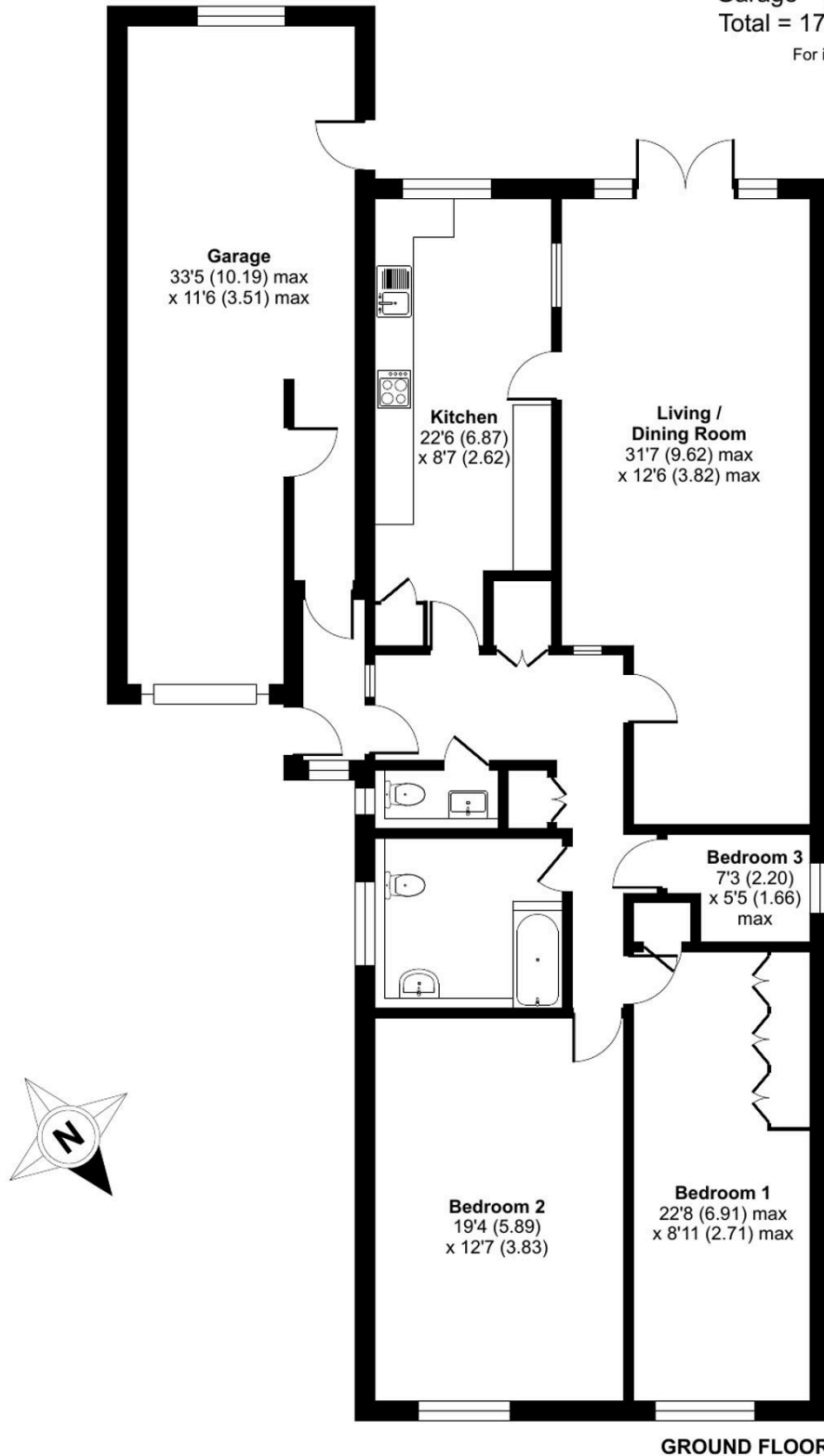
Pack Lane, Oakley, Basingstoke, RG23

Approximate Area = 1361 sq ft / 126.4 sq m

Garage = 365 sq ft / 33.9 sq m

Total = 1726 sq ft / 160.3 sq m

For identification only - Not to scale



Floor plan produced in accordance with RICS Property Measurement 2nd Edition, Incorporating International Property Measurement Standards (IPMS2 Residential). © nchecon 2026. Produced for Property Explorer. REF1468493

You can include any text here. The text can be modified upon generating your brochure.