



Cordage House

Cobblestone Square, E1W

OIEO. £280,000

A bright and spacious studio apartment set on the second floor of a sought-after purpose-built development, benefitting from a separate sleeping zone and modern finishing.

CHESTERTONS



Cordage House

Cobblestone Square, E1W

- Well-proportioned studio apartment
- Located on the second floor
- Benefits from a Juliette balcony
- Close to transport links



A bright and spacious studio apartment set on the second floor of a sought-after purpose-built development, benefitting from a separate sleeping zone and modern finishing. The property is well-proportioned comprising; modern kitchen open to the living room which benefits from a sliding Juliette balcony; contemporary bathroom; separate sleeping area. Cordage House is a modern purpose-built development located in the sought after Cobblestone Square. The local transport links via Wapping Overground Stions, along with a vibrant selection of local shops, restaurants and bars make this apartment ideal for convenience and lifestyle.

Tenure: Leasehold 982 years 6 months
Service Charge: £3600
Ground Rent: £200
Local Authority: London Borough of Southwark
Council Tax Band: C

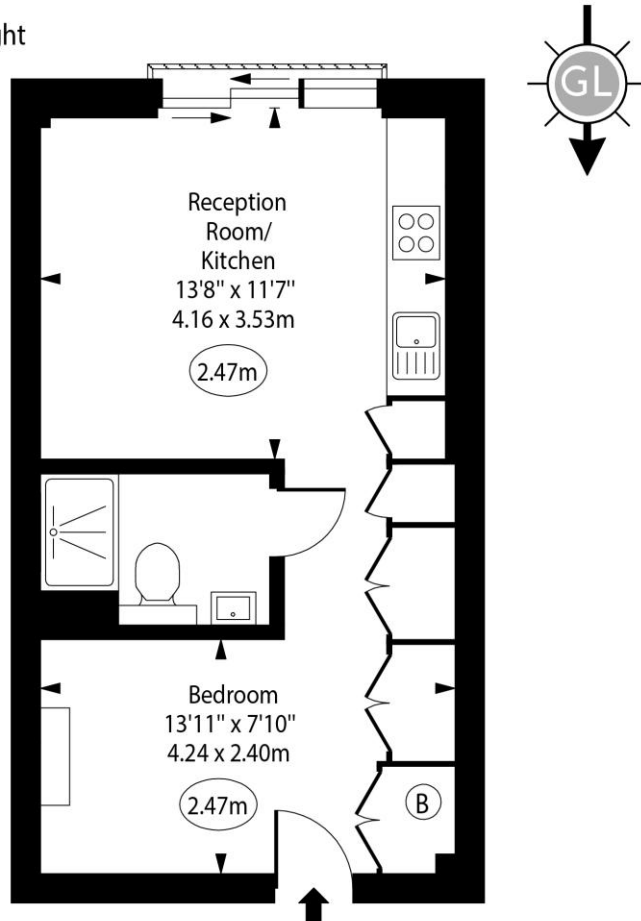
Score	Energy rating	Current	Potential
92+	A		
81-91	B		
69-80	C	78 C	78 C
55-68	D		
39-54	E		
21-38	F		
1-20	G		

Chestertons Tower Bridge Sales

220 Tower Bridge Road
 Tower Bridge
 London
 SE1 2UP
 towerbridge@chestertons.co.uk
 020 7357 7999
 chestertons.co.uk

Cordage House, Cobblestone Square, E1W

○ - Ceiling Height



First Floor

Approx Gross Internal Area 353 Sq Ft - 32.79 Sq M

Every attempt has been made to ensure the accuracy of the floor plan shown. However, all measurements, fixtures, fittings, and data shown are approximate interpretations and for illustrative purposes only. Measured according to the RICS. Not To Scale.

www.goldlens.co.uk

Ref. No. 032067J

