

LCP/PrivateOffice

est.1990

Pembroke Court, Kensington W8
Asking Price £865,000 STC



Description

A contemporary two bedroom apartment on the raised ground floor of a sought after Edwardian mansion block with views over the private, Grade II Listed garden square.

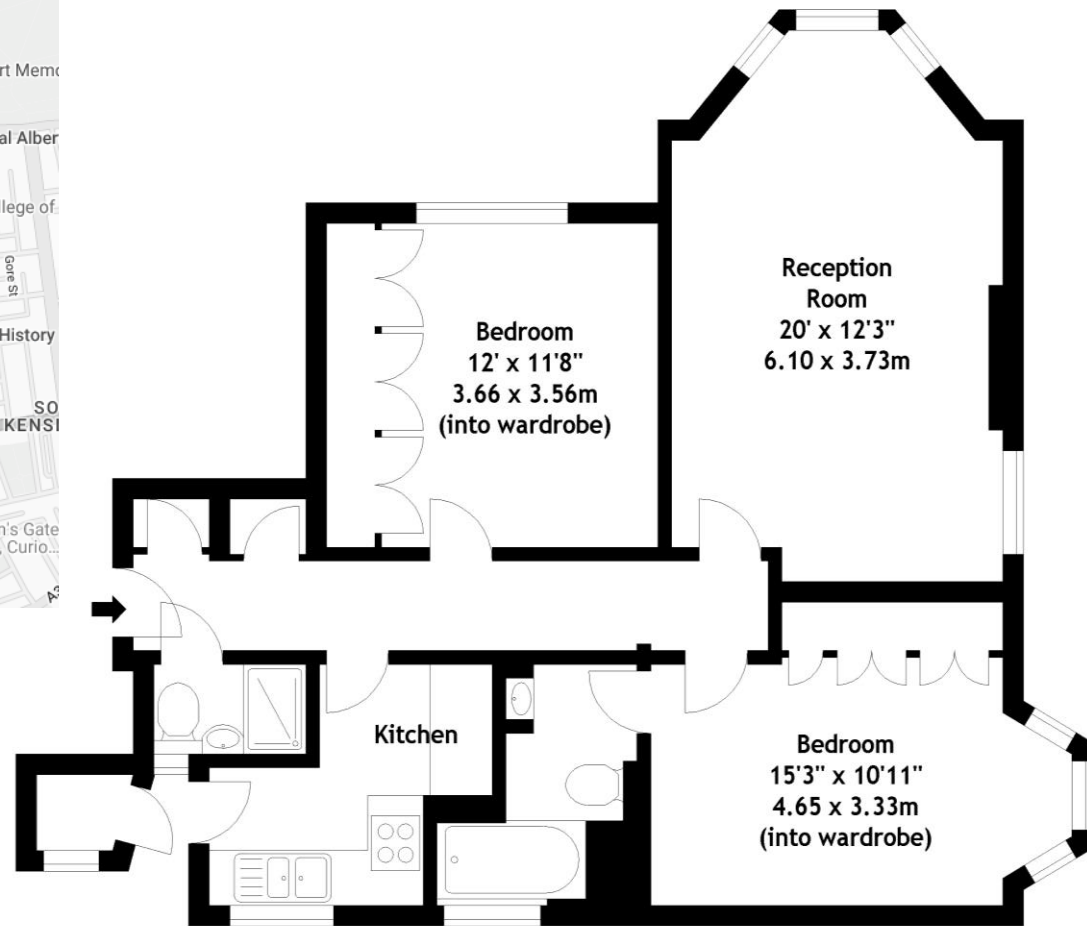
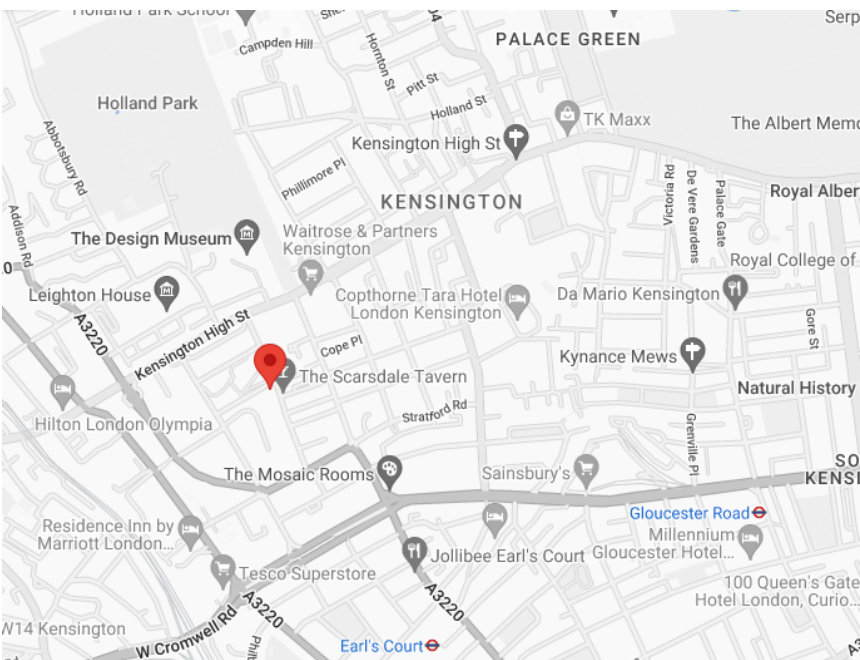
The property is presented in good order and comprises a reception with bay window looking towards the square, master bedroom, shower room, bedroom two with ensuite bathroom and a separate kitchen

Pembroke Court is on the corner of South Edwardes Square and Pembroke Villas so is well situated for local transport from High Street Kensington and Earl's Court stations as well as local shopping facilities, bars and restaurants. Residents can apply for access to Edwardes Square (fees apply).

Accommodation

Raised Ground Floor Apartment | Reception Room | Kitchen | Master Bedroom | Shower Room | Bedroom 2 | Ensuite Bathroom | Access to Edwardes Square (by separate negotiation | Royal Borough of Kensington & Chelsea | 766 sq ft (71 sq m)

Asking Price	£865,000 STC
Lease	Share of Freehold
Service Charge	£15,056 per annum (inc. major works)
Ground Rent	Peppercorn
Council Tax	RBK&C Band G



Score	Energy rating	Current	Potential
92+	A		
81-91	B		82 B
69-80	C		
55-68	D		
39-54	E	49 E	
21-38	F		
1-20	G		

Raised Ground Floor
Pembroke Court, W8
Gross Internal Area 766 sq ft - 71.16 sq m

Drawn from supplied plans. All measurements are approximate.
 This floor plan is for illustrative purposes only and is not to scale.

© LCP 2011



LCP House, Ogle Street, London W1W 6HU
sales@lcpprivate.com
020 7723 1733





LCP House, Ogle Street, London W1W 6HU
sales@lcpprivate.com
020 7723 1733

LCP/PrivateOffice

est.1990

LCP House, Ogle Street, London W1W 6HU
sales@lcpprivate.com
020 7723 1733