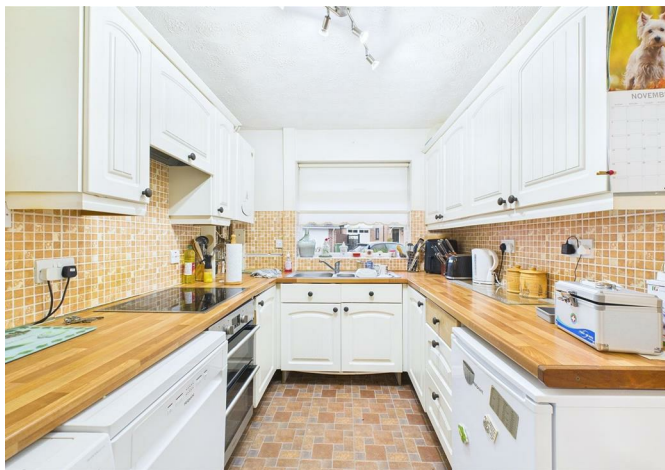


PARSONS
COMPANY



8 Gibson Road, Shipdham, Thetford, IP25 7QA
£210,000



8 Gibson Road, Shipdham, Thetford, IP25 7QA

£210,000

Guide Price £210,000 - £220,000. This spacious detached house is pleasantly situated within a quiet cul-de-sac in a sought-after village location, offering an ideal blend of privacy and convenience.

The accommodation begins with an entrance hallway leading to a comfortable living room, along with the fitted kitchen providing ample storage and workspace, complemented by a separate dining room.

Upstairs, the property offers two double bedrooms along with a bathroom suite.

Externally, the home benefits from an enclosed rear garden, along with a single garage and off-road parking to the front.

Offered to the market with no onward chain, this property presents an excellent opportunity for buyers seeking a peaceful village setting with practical living space.

For room measurements please click on the floorplan.

Description



Situation



null

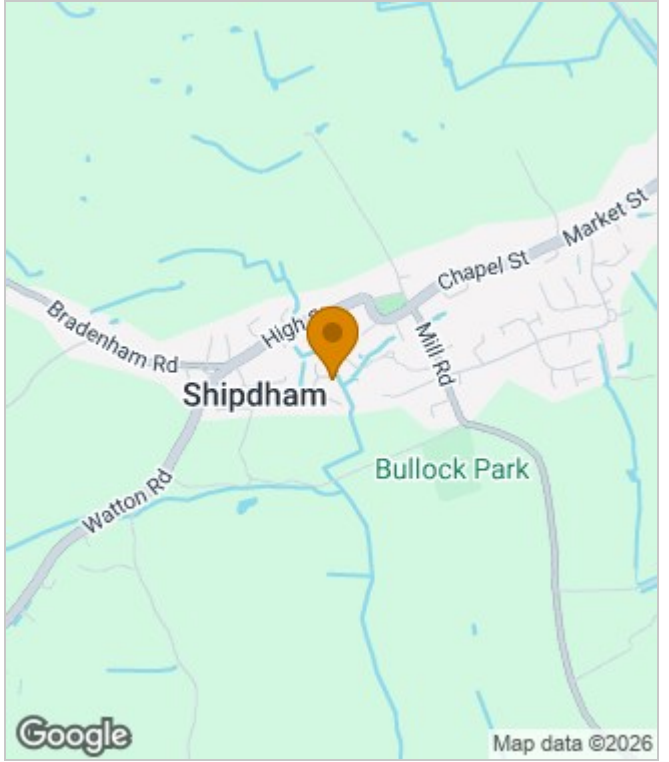
Council Tax Band: B

Available:

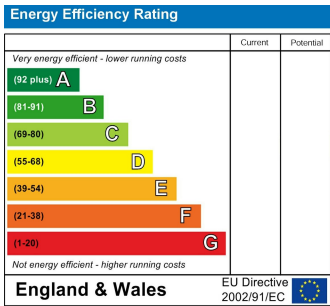
Floor Plans



Area Map



Energy Performance Graph



These particulars, whilst believed to be accurate are set out as a general outline only for guidance and do not constitute any part of an offer or contract. Intending purchasers should not rely on them as statements of representation of fact, but must satisfy themselves by inspection or otherwise as to their accuracy. No person in this firm's employment has the authority to make or give any representation or warranty in respect of the property.

37 Quebec Street, Dereham, Norfolk, NR19 2DJ
Tel: 01362 696895 Email: post@parsonsandcompany.co.uk parsonsandcompany.co.uk