

## Monson Road, SE14

£485,000

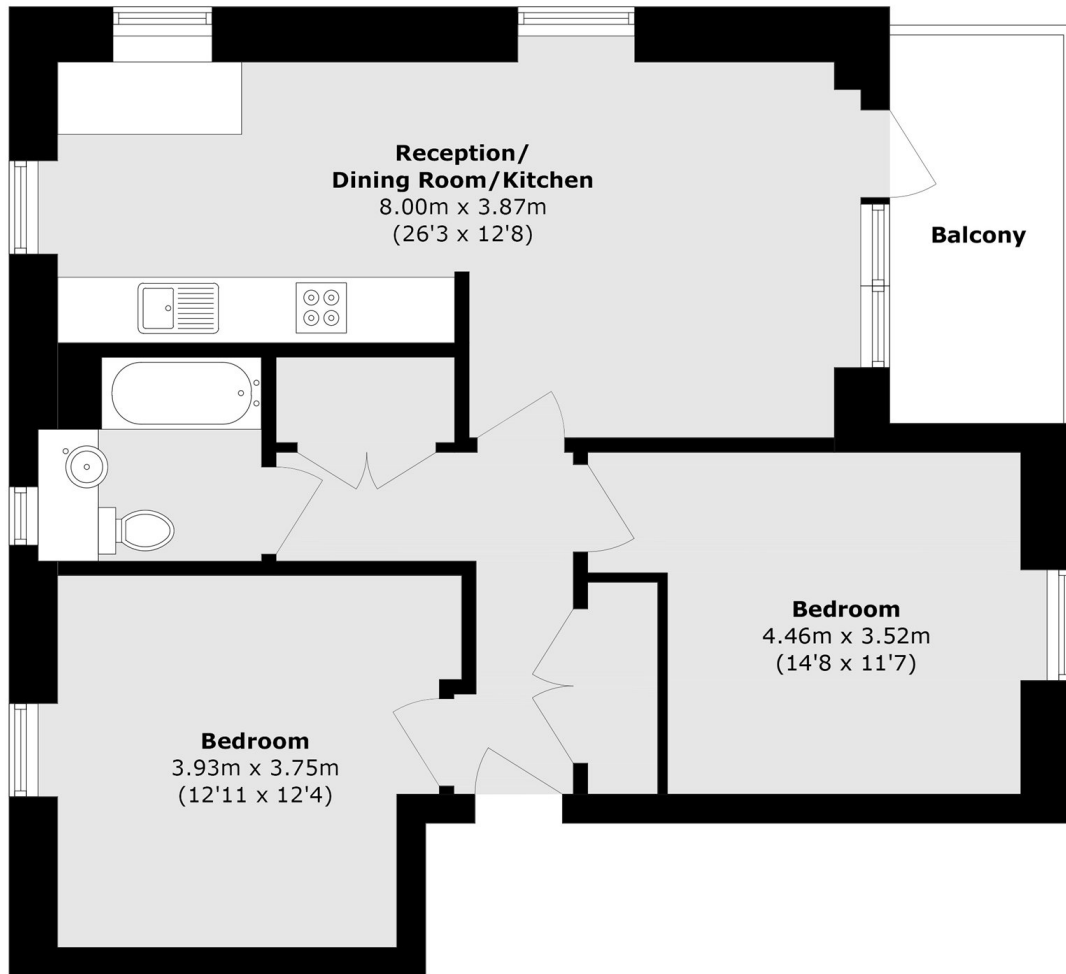
A delightful two-bedroom flat set on the ever-popular Monson Road within the sought-after Hatcham Park Conservation Area. With Two generously sized double bedrooms, a bright and spacious open-plan living area, and a private balcony, this charming home offers both great space and storage in addition to being located in a prime location.

Monson Road is located within the highly sought-after Hatcham Park Conservation Area, close to the well-regarded Haberdashers Hatcham Primary School. The property is also conveniently positioned for a wide range of local amenities, including New Cross Gate and Queens Road Peckham Overground stations, as well as a nearby amenities.

### Features

- Two Bedrooms
- Private Balcony
- Open Plan Living Room
- Ample Storage
- Close To Transport Links

# Monson Road, London, SE14



Total area (approx.): 74.6 sq. m (802.9 sq. ft)  
Balcony area (approx.): 7.1 sq. m (76.4 sq. ft)