



## Fordwych Road, NW2

### £475,000

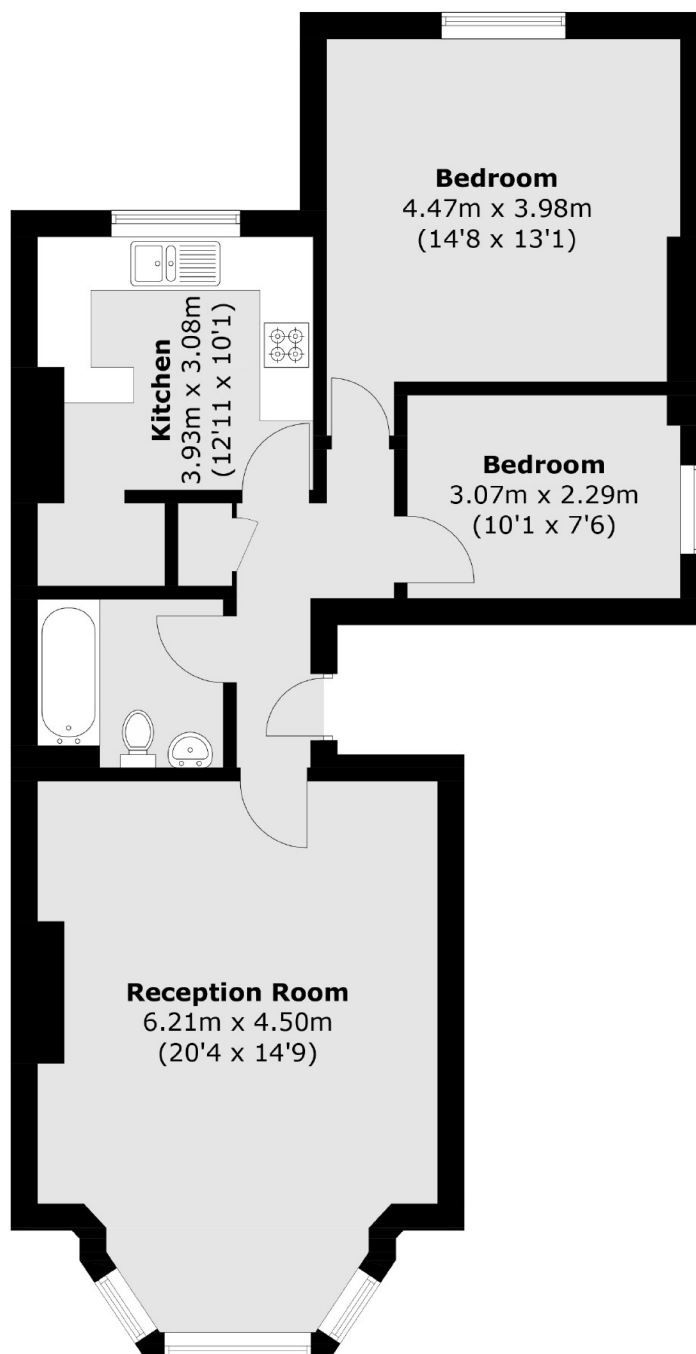
A raised ground floor two double bedroom period conversion measuring in excess of 750 sq.ft. Offering a large reception, a separate kitchen, and a bathroom. The property comes with no onward chain.

Fordwych Road is ideally located within easy reach of the ever-popular West Hampstead with its boutique cafes, restaurants, and other local amenities. Transport links are easily available, with numerous bus routes and underground stations close by.

### Features

- Two Double Bedrooms
- Separate Kitchen
- Large Reception Room
- Period Conversion
- Leasehold
- No Onward Chain

# Fordwych Road, London, NW2



Total area (approx.): 69.9 sq. m (752.4 sq. ft)

## Dexters

Cricklewood  
28-30 Cricklewood Broadway  
London  
NW2 3HD  
Sales  
020 7794 7710

Energy Rating: C. We aim to make our particulars both accurate and reliable. However they are not guaranteed; nor do they form part of an offer or contract. If you require clarification on any points then please contact us, especially if you're traveling some distance to view. Please note that appliances and heating systems have not been tested and therefore no warranties can be given as to their good working order.

 **RICS** | Regulated  
Estate Agent  
and Letting Agent

[dexters.co.uk](https://www.dexters.co.uk)