



Foxglove Drive, Forge Wood, Crawley, RH10 3XR

Set on the sought-after Foxglove Drive in Forge Wood, this stylish modern semi-detached home offers effortless contemporary living in a prime location. Built in 2020 and arranged over three thoughtfully designed floors, the property provides approximately 1,194 sq ft of well-balanced space, ideal for modern family life or discerning professionals.

The ground floor welcomes you with a comfortable reception room, perfect for both relaxing and entertaining. The sleek fitted kitchen with breakfast area forms the heart of the home, complemented by a convenient cloakroom. The upper floors reveal three generously sized bedrooms, crowned by an impressive top-floor principal suite complete with a private en suite shower room — a calm retreat away from the rest of the house.

Outside, the enclosed rear garden has been designed for low-maintenance enjoyment, featuring an artificial lawn, a spacious patio ideal for outdoor dining, and a further secluded seating area for quiet moments. A garage and driveway provide practical off-street parking, while excellent transport links — including easy access to Gatwick Airport — make this an outstanding choice for those seeking comfort, style, and connectivity in Crawley.

£495,000 Freehold

Foxglove Drive, Forge Wood, Crawley, RH10 3XR



- 3 Double Bedroom Semi Detached House
- Useful Cloakroom
- Close to Gatwick & M23 Motorway
- Top Floor main bedroom suite
- Enclosed low maintenance rear Garden
- Estate management charge £408pa
- Fitted Kitchen / Breakfast Room
- Driveway & Garage

Entrance Hall

Cloakroom

Living Room

15'7" x 11'11" (4.76 x 3.64)

Kitchen / Breakfast Room

11'1" x 8'4" (3.38 x 2.56)

Stairs to first floor Landing

Bedroom 2

15'7" x 8'4" (4.76 x 2.55)

Bedroom 3

9'3" x 8'3" (2.84 x 2.54)

Family Bathroom

Study Area

6'9" x 4'5" (2.08 x 1.37)

Stairs to 2nd floor Landing

Bedroom 1

18'11" x 10'8" (5.77 x 3.26)

En Suite Shower Room

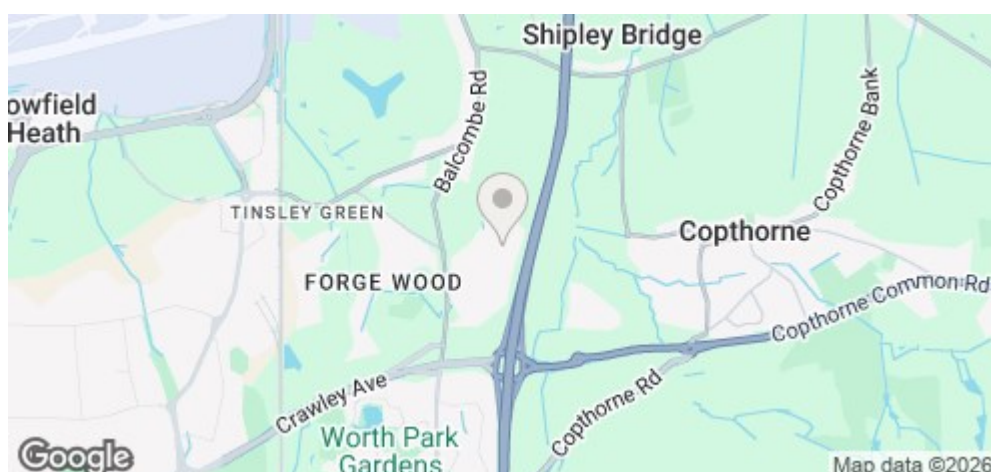
Outside

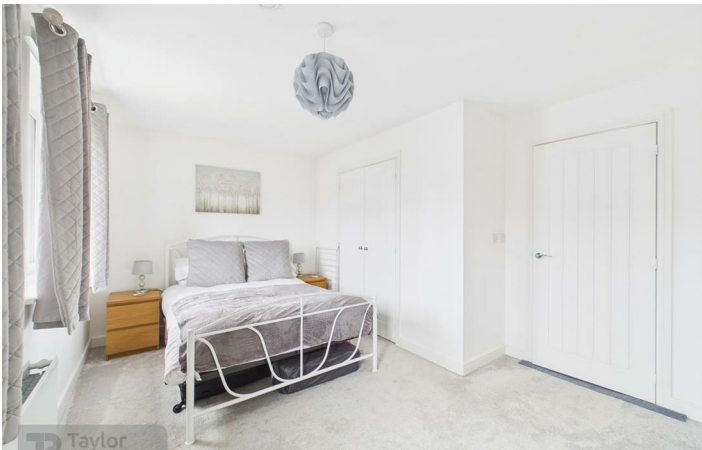
Rear Garden

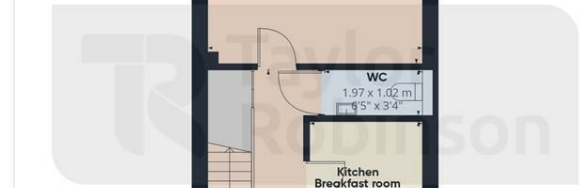
Garage

Driveway

Council Tax Band: D







**Branch Address: 2 Brittingham House Orchard Street, Crawley,
West Sussex, RH11 7AE
Tel: 01293 552388
Email: sales@taylor-robinson.co.uk
www.taylor-robinson.co.uk**

