



Gainsborough Road

Richmond, TW9

Asking Price £975,000

A spacious three/four-bedroom family home with off-street parking and a superb 65ft rear garden, tucked away on a peaceful road in Kew.

CHESTERTONS



Gainsborough Road

Richmond, TW9

- House
- Mid Terrace
- Driveway
- Garden



Situated on a quiet residential road in Kew, this well-proportioned four-bedroom terraced family home offers over 1,200 sq ft of accommodation, off-street parking and a substantial rear garden extending to almost 66ft.

The ground floor comprises a welcoming entrance hall, a bright front reception room, a versatile double bedroom, and a spacious kitchen overlooking the rear garden. To the rear, a large extension provides excellent additional living and entertaining space with direct access to the expansive patio and garden, ideal for families looking to put their own stamp on a home. A ground floor shower room adds further practicality.

Upstairs are three further bedrooms, including a generous principal bedroom, all served by a family bathroom. The property also benefits from a useful garden shed and off-street parking to the front.

Gainsborough Road is a sought-after location, conveniently positioned for Kew Gardens Station, North Sheen Station, the amenities of Kew Village, highly regarded local schools and the vast open spaces of the Royal Botanic Gardens and Old Deer Park. Offering excellent potential for a growing family, this is a wonderful opportunity to acquire a home in one of South West London's most desirable neighbourhoods.

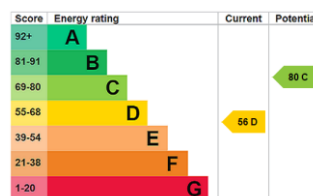
Tenure:

Service Charge: £0

Ground Rent: £0

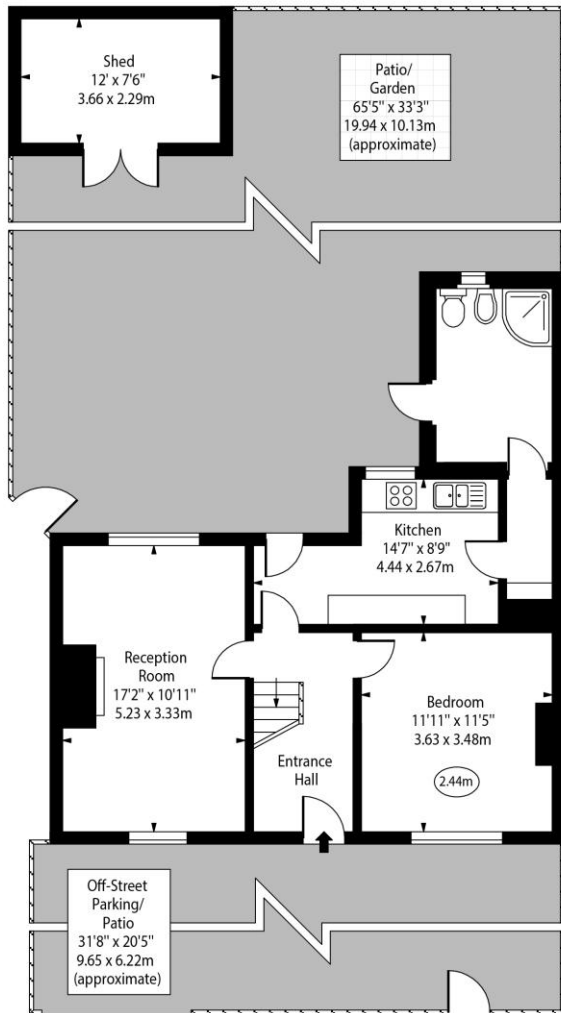
Local Authority: London Borough of Richmond upon Thames

Council Tax Band: E



Chestertons Kew Sales

1 Royal Parade
 Kew
 Richmond
 TW9 3QD
 kew@chestertons.co.uk
 020 8104 0340
 chestertons.co.uk

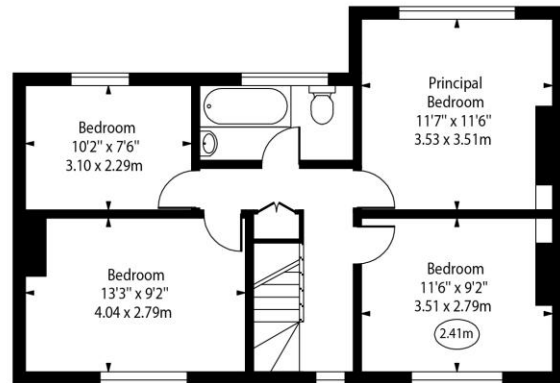


Ground Floor

Gainsborough Road,
Richmond,
Surrey, TW9



○ - Ceiling Height



First Floor

Approx Gross Internal Area 1230 Sq Ft - 114.27 Sq M

(Excluding Shed)

Every attempt has been made to ensure the accuracy of the floor plan shown. However, all measurements, fixtures, fittings, and data shown are approximate interpretations and for illustrative purposes only. Measured according to the RICS. Not To Scale.

www.goldlens.co.uk

Ref. No. 031851E

