



## Penshannel offers in the region of £190,000

- No On Going Chain
- Lovingly Maintained and Well Presented
- Sizable Gardens to Front & Rear
- New Boiler Fitted in 2025
- Level Access Driveway
- EPC Rating: Awaited



 2  1  2



## About the property

Now Available for sale with No On Going Chain, nestled onto a sizable plot, with leveled access, is this ideal family home or down-size in the heart of Skewen! Boasting excellent links to commuting routes via public transport or the M4 corridor and A465. Brilliant for those who enjoy the natural beauty of Wales, convenient for days out to Aberavon Sea Front or the Brecon Beacons National Park. Internally, the property comprises of an entrance hallway, with doors through to both double bedrooms, the family shower room and the living space split between a living area, dining area and fitted kitchen residing in a previous extension. The frontage consists of a driveway and mature lawned garden. Side access is available to a further rear garden, landscaped and housing paved patio, feature pond and lawns with brick built sheds. Internal viewings are highly recommended to truly appreciate this lovely home!

## Accommodation

### Entrance Hallway

### Lounge Area

11' Max x 10' 5" Plus Bay Window ( 3.35m Max x 3.17m Plus Bay Window )

### Dining Area

11' 3" x 8' 5" ( 3.43m x 2.57m )

### Kitchen

13' x 9' 4" ( 3.96m x 2.84m )

### Shower Room



### **Bedroom One**

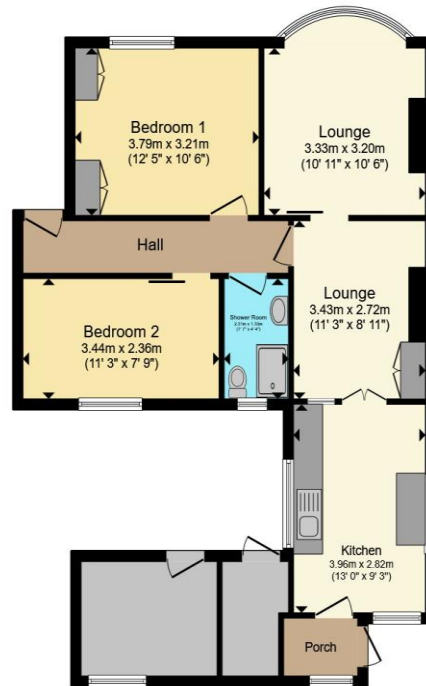
10' 5" x 10' 7" ( 3.17m x 3.23m )

### **Bedroom Two**

11' 2" x 7' 7" ( 3.40m x 2.31m )

### **Front & Rear Gardens**

## Floorplan



Total floor area 75.8 m<sup>2</sup> (816 sq.ft.) approx

This floor plan is for illustrative purposes only. It is not drawn to scale. Any measurements, floor areas (including any total floor area), openings and orientation are approximate. No details are guaranteed, they cannot be relied upon for any purpose and they do not form part of any agreement. No liability is taken for any error, omission or misstatement. A party must rely upon its own inspection(s). Powered by [www.propertybox.io](http://www.propertybox.io)



## Important Information

Note while we endeavour to make our sales details accurate and reliable, if there is any point which is of particular interest to you, please contact the office and we will be pleased to confirm the position for you. We have not personally tested any apparatus, equipment, fixtures, fittings or services and cannot verify they are in working order or fit for their purposes. Nothing in these particulars is intended to indicate that carpets or curtains, furnishings or fittings, electrical goods (whether wired or not). Gas fires or light fittings or any other fixtures not expressly included form part of the property offered for sale. This computer generated Floorplan, if applicable, is intended as a general guide to the layout and design of the property. It is not to scale and should not be relied upon for dimensions. Tenure: We cannot confirm the tenure of the property as we have not had access to the legal documents. The buyer is advised to obtain verification from their solicitor or surveyor.

Peter Alan Limited is registered in England and Wales under company number 2073153, Registered Office is Cumbria House, 16-20 Hockliffe Street, Leighton Buzzard, Bedfordshire, LU7 1GN. VAT Registration Number is 500 2481 05. For activities relating to regulated mortgages and non-investment insurance contracts, Peter Alan Limited is an appointed representative of Connells Limited which is authorised and regulated by the Financial Conduct Authority. Connells Limited's Financial Services Register number is 302221. Most buy-to-let

