

STURGES
LONDON

North End Road, London

£700,000 Leasehold



- 2 double bedrooms
- 2 bathrooms
- Private South Facing Patio
- High Spec, Modern Finish
- 0.25 miles to Fulham Broadway
- Parking permit included



STURGES
LONDON



North End Road, London

A split-level, spacious and modern two double bedroom and two bathroom apartment on the Ground & Lower Ground Floors of this newly developed building.

This apartment benefits from a private patio garden, large open-plan kitchen/ reception room and there is also a secondary set off outside space off one of the bedrooms.

The property benefits from being in a newly refurbished building, with modern finishes. It also comes with a permit parking which is a rare find for this style of building.

There are a fantastic selection of shops, supermarkets, restaurants and cafes on the property doorstep. Including, Gail's bakery, large Waitrose, Vaga Bond and a variety of independent green grocers and butcher shops.

It is very closely situated to the David Lloyd Gym and Pure Gym. Fulham Broadway Station is circa. 0.25 miles away

Local Authority:

Council Tax Band: E

Lease: Add text here

Service Charges: Add text here

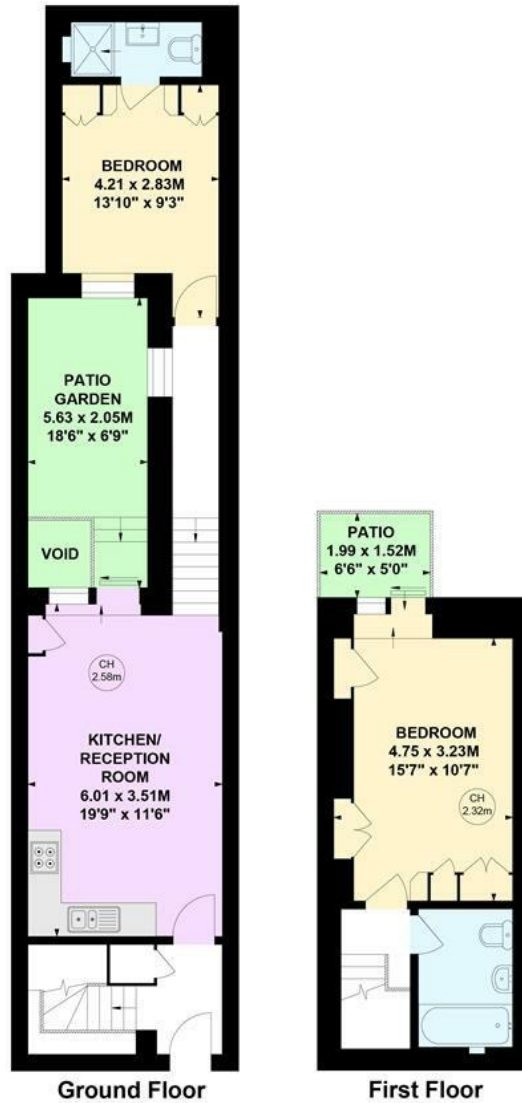
Ground Rent: Add text here

STURGES
LONDON

North End Road, SW6

Approximate gross internal area
70.75 sq m / 761 sq ft

Key :
CH - Ceiling Height



Energy Efficiency Rating		Current	Potential
Very energy efficient - lower running costs			
(92 plus)	A		
(81-91)	B		
(69-80)	C	73	
(55-68)	D		
(39-54)	E		
(21-38)	F		
(1-20)	G		
Not energy efficient - higher running costs			
England & Wales		EU Directive 2002/91/EC	

For more information, please contact:

(Tel) 020 3393 2002
(Email) hello@sturgeslondon.co.uk

668 Fulham Road, Parsons Green, London, SW6 5RX

sturgeslondon.co.uk

This plan is not to scale and must be used as layout guidance only. All measurements and areas are approximate and should not be relied upon to provide accurate information. This plan must not be relied upon when making property valuations, design considerations or any other such relevant decisions. We accept no responsibility or liability (whether in contract, tort or otherwise) in relation to any loss whatsoever arising from or in connection with any use of this plan or the adequacy, accuracy or completeness of it or any information within it.

Agents Note: Whilst every care has been taken to prepare these particulars, they are for guidance purposes only. All measurements are approximate and for general guidance purposes only and whilst every care has been taken to ensure accuracy, they should not be relied upon and potential buyers/tenants are advised to recheck the measurements.